

ProMaxion™ Process Mass Spectrometer

Online Gas Analysis for Weatherproof or Hazardous Area Locations

AMETEK's ProMaxion process mass spectrometer offers real-time gas analysis in a reliable easy-to-use package for a wide range of industrial applications. With more than 20 years' experience in mass spectrometer design and manufacture, and over six thousand quadrupole analyzers operating reliably worldwide, AMETEK alone has the credentials to bring you the ProMaxion—cost-effective, high-performance analysis for your process.

MULTICOMPONENT ANALYSIS

Real-time process monitoring of multiple components is straightforward with ProMaxion's powerful, easy-to-use Process 2000 software. Complex overlapping spectra are handled automatically, with data output directly in concentration units. Different calibration and analysis methods can be assigned to each sample port.

REPLACES PROCESS GAS CHROMATOGRAPHS

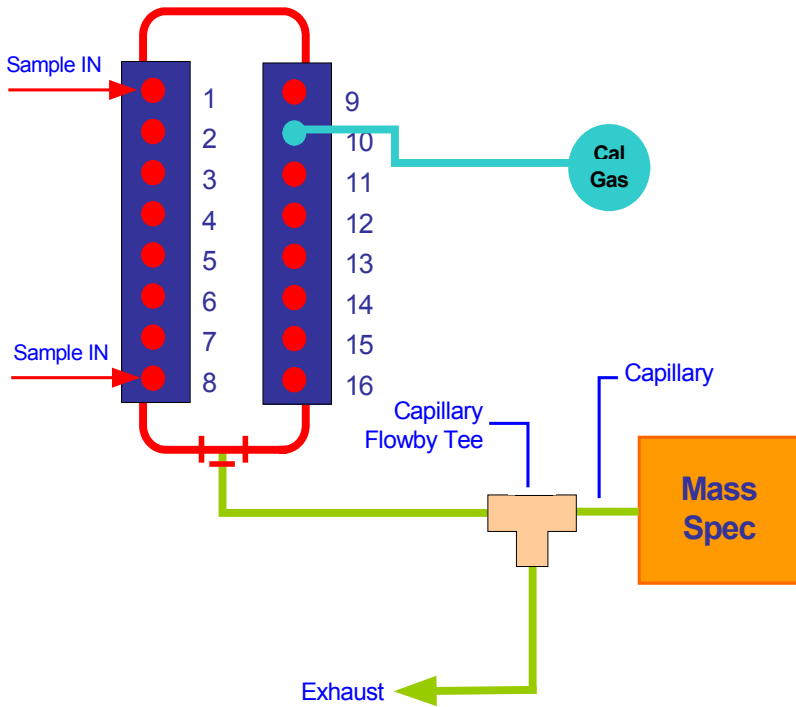
Mass spectrometry is a very rapid analytical method allowing analysis of multiple sample streams in seconds and can directly replace gas chromatographs and other discrete analytical devices. This field-proven system, combined with AMETEK's more than 30 years' experience in the process analyzer business, means you can depend on ProMaxion for your critical process analysis and control applications.

EASY TO USE, EASY TO MAINTAIN

The software provides easy set-up and operation and includes advanced alarm and automation capabilities. Autocalibration maintains the performance and accuracy of the system for quantitative analysis. The on-board computer enables auto-start to prevent loss of data or interruption of your process during power failure. Self-diagnostics and modular design ensure ease of maintenance by your own personnel on site, with remote support available for additional factory diagnosis and troubleshooting. There is no need for the expensive service contract typical of most process mass spectrometers.



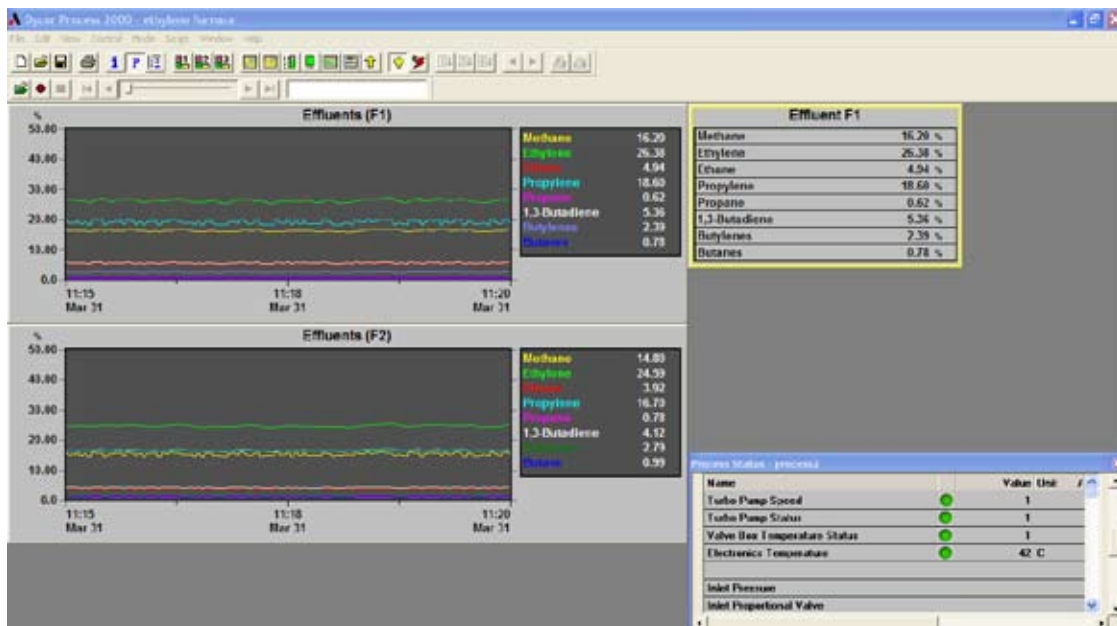
ATEX-version ProMaxion for hazardous location applications.



CUSTOM SAMPLE HANDLING

The ProMaxion can be custom-designed to monitor just about any type of gas stream, depending on sample pressures, hazardous area requirements, particulate levels and number of sample points. Automated sample switching allows unattended analysis of process and calibration gases. The multiport gas sample inlet system consists of multiple valves and a capillary restriction in an enclosure heated to prevent condensation. A membrane inlet system is incorporated for ambient air applications.

ProMaxion generic sampling system - 16 valve unit. Custom systems can be designed to suit the application.



PROCESS 2000 SOFTWARE

Process 2000 software is a powerful data acquisition tool and control package designed for automated operation of process mass spectrometers. It allows full user interaction and customization.

APPLICATIONS

- Ammonia
- Ethylene
- Ethylene Oxide
- Polyethylene
- Steel Manufacturing, e.g. BOF, VOD
- Vinyl Chloride
- Syn Gas Production
- Environmental - BTX, VOCs
- Methanol
- Fermentation
- Solvent Drying
- Scrubbers
- Reaction End Point
- Fuel Cell Research



SPECIFICATIONS

Range: 1-100 AMU; optional 1-200 AMU

Inlet: Expandable sample selection manifold with electric or pneumatic valves. Membrane inlet system for ambient air samples.

Inlet Pressure (gas): 30 PSIG (207 kPa) to 3 Torr absolute

Accuracy: RSD better than 25 PPM on 1% component (e.g., argon in air).

Communication: Ethernet standard (Optional: RS-485, RS-232, fiber optics, wireless radio, Modbus, OPC). Optional analog/digital outputs available.

Detection Range: From 10 PPM to 100% with gas samples, Faraday cup. Optional electron multiplier for lower LODs.

Power: 115/230 VAC, 50/60 Hz, 1000 W

Ambient Temperature: +12°C to 40°C (water-cooled).

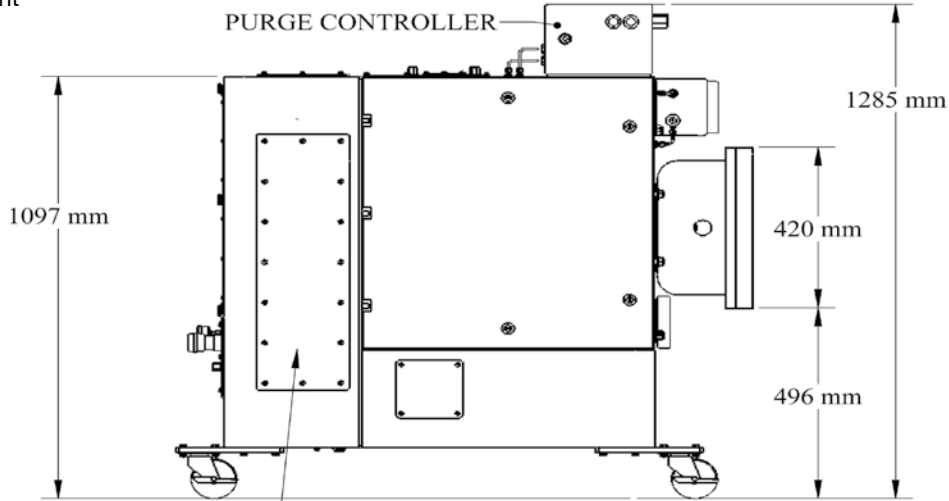
PC: On-board PC standard. Windows®-based Process 2000 software can also be run on remote PC.

Enclosure: Weather resistant, stainless steel; ATEX and NEC purged, and designed for CI DI and II versions available.

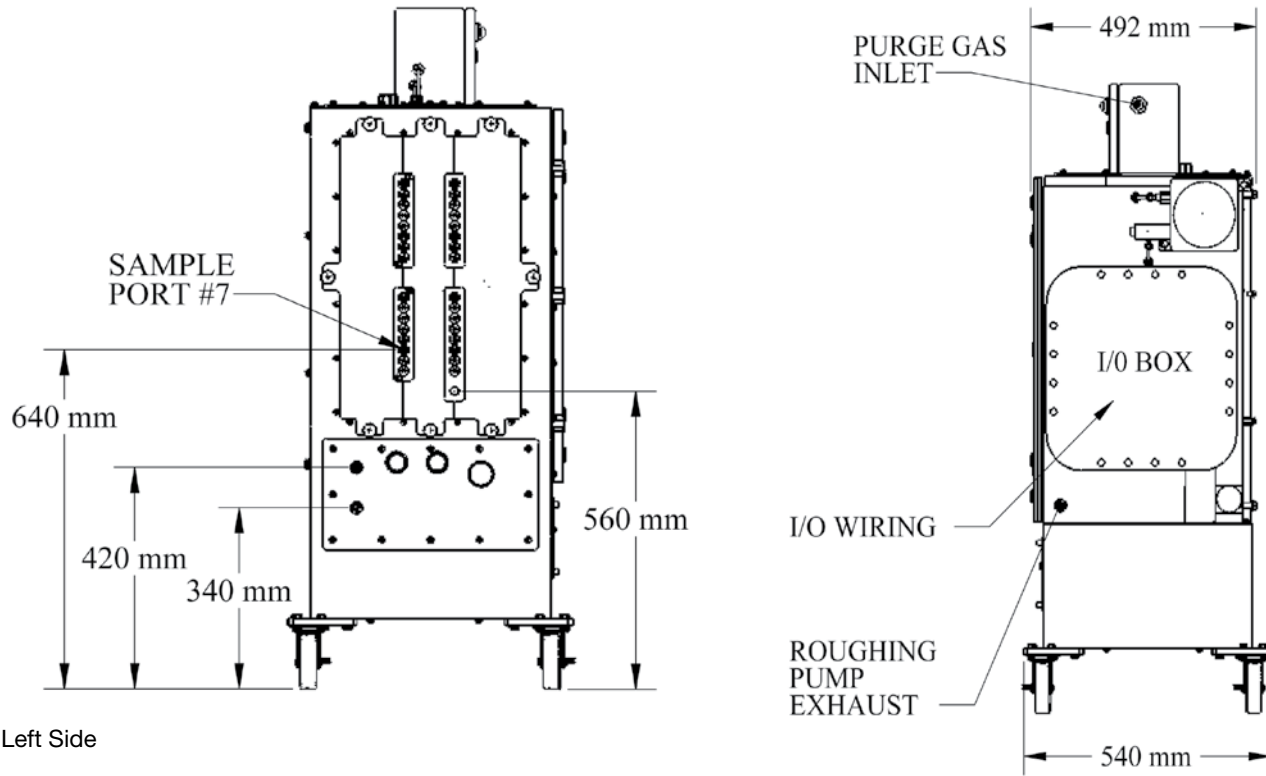
CE Compliance: EN61326 EMC Directive and EN61010-1 Low Voltage Directive.

ATEX Model Ratings:  II 2 G, EEx pd[ib] IIB+H2 T3, -15°C ≤ Ta ≤ 50°C.

Front



Right Side



One of a family of innovative process analyzer solutions from AMETEK Process Instruments. Specifications subject to change without notice.

USA - Pennsylvania
150 Freeport Road
Pittsburgh, PA 15238
Ph. 412-828-9040
Fax 412-826-0399

MANUFACTURING LOCATIONS



CANADA
2876 Sunridge Way N.E.
Calgary, AB T1Y 7H9
Ph. 403-235-8400
Fax 403-248-3550

USA - Delaware
455 Corporate Blvd.
Newark, DE 19702
Ph. 302-456-4400
Fax 302-456-4444

USA - Oklahoma
2001 N. Indianwood Ave.
Broken Arrow, OK 74012
Ph. 918-250-7200
Fax 918-459-0165

AMETEK[®]
PROCESS INSTRUMENTS

www.ametekpi.com

© 2006, by AMETEK, Inc. All rights reserved. ProMax (03/06)



SUPPORT LOCATIONS

USA - Texas
Ph. 281-463-2820
Fax 281-463-2701

CHINA - Beijing
Ph. 86-10-85262111
Fax 86-10-85262141

CHINA - Shanghai
Ph. 86 21 6426 8111
Fax 86 21 6426 7054

FRANCE
Ph. 33 1 30 68 89 00
Fax 33 1 30 68 89 99

GERMANY
Ph. 49 21 59 91 36 0
Fax 49 21 59 91 3680

MIDDLE EAST - Dubai
Ph. 971-4-881 2052
Fax 971-4-881 2053

SINGAPORE
Ph. 65-6484-2388
Fax 65-6481-6588