

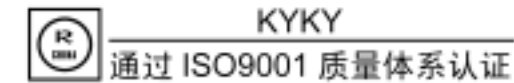
**技术性能指标**

- ★ **分辨率** 优于 4.5nm (钨丝阴极)
- ★ **放大倍数** 15 倍~250,000 倍
- ★ **电子光学系统**  
电子枪: 叉式钨丝阴极  
加速电压: 0~30KV  
透镜系统: 三级电磁透镜  
物镜光阑: 三个光阑可在真空外选择调节
- ★ **样品室**  
六个接口, 可接 WDS、EDS、BSE 等多种附件和探测器
- ★ **样品台**  
标准样品台: X=50mm,Y=50mm,Z=25mm,  
T=-5° ~+90° ,R=360°  
大样品台: X=80mm,Y=50mm,Z=30mm,  
T=0° ~+90° ,R=360°
- ★ **计算机系统**  
WindowsXP 软件操作系统, 全中文菜单
- ★ **图像显示与观察**  
数字图像, 1024 × 768 显示方式  
17" 彩色显示器
- ★ **扫描方式**  
全幅、面、线、点、选区双放大及屏幕分割
- ★ **信号处理和工作方式**  
交直流伽玛调制      自动聚焦  
低通滤波                自动消像散  
图象旋转                自动亮度对比度  
动态聚焦                倾斜补偿
- ★ **图像处理及分析**  
图像增强    阈值分割    粒度分析  
形态学变换    图像灰度直方图显示  
灰度图像的伪彩色变换
- ★ **图像输出与记录**  
◇ 高分辨 CRT 照相 (2500 线)  
◇ 支持多种图像文件格式, 支持视频打印机及各种标准接口打印输出设备
- ★ **真空系统**  
全自动高速扩散泵真空系统 (可选涡轮分子泵真空系统)

**SPECIFICATIONS**

- ★ **Resolution** 4.5nm guaranteed
- ★ **Magnification** 15 × ~250000 ×
- ★ **Electron Optical System**  
Electron gun: Tungsten cathode  
Accelerating voltage: 0~30kV  
Lens system: Three electron magnetic lens system  
Objective lens aperture: Three apertures selectable
- ★ **Specimen Chamber**  
Six ports for WDS, EDS, BSE detectors and other attachment installation
- ★ **Specimen Stage**  
Standard Stage: X=50mm,Y=50mm,Z=25mm,  
T=-5° ~+90° ,R=360°  
Large Stage: X=80mm,Y=50mm,Z=30mm,  
T=0° ~+90° ,R=360°
- ★ **Computer System**  
Microsoft™ Windows™ XP operation system
- ★ **Image Display**  
Digital image,1024 × 768 frame and display resolution  
17" CRT monitor
- ★ **Scanning Mode**  
Plane, line and spot scan. Dual magnification and screen split
- ★ **Signal Processing And Operation Mode**  
Γ modulation(DC,AC)      Automatic focus  
Low pass filter              Automatic stigmatism  
Image rotation              Automatic brightness and contrast  
Dynamic focus              Compensated tilt
- ★ **Image Processing And Analyzing**  
Image enhancement    Threshold transformation Particle statistic analysis  
Morphology transformation Gray level histogram display  
Pseudo-colour transform for gray scale image
- ★ **Image Output And Record**  
◇ Ultra high-resolution(2500 lines) scope for photographing  
◇ Versatile image document formats, support digital monochrome printer and versatile print-out equipments with standard interface
- ★ **Vacuum System**  
Fully automatic high speed diffusion pump vacuum system (Turbo molecular pump optional)

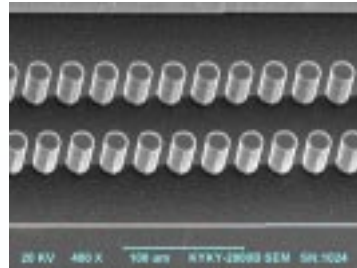
**KYKY-2800B型数字化扫描电子显微镜**  
**KYKY-2800B Digital Scanning Electron Microscope**



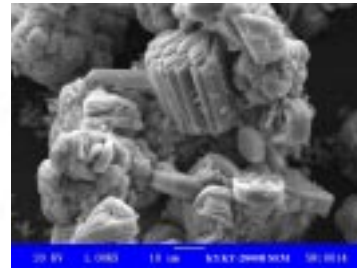
电话(Tel): 86-10-62565522-8056/1204/2603  
 传真(Fax): 86-10-62555306 62571593 网址(Website): www.kyky.com.cn  
 邮编(Post Code): 100080 电子邮件(E-mail): kx-sem@kyky.com.cn  
 地址: 北京中关村北二条 13 号(Add: Zhongguancun Beijing,China)  
 信址: 北京 2724 信箱 科学仪器事业部  
 (P.O.Box: Scientific Instrument Division, No.2724 Beijing,China)



KYKY-2800B型扫描电子显微镜是KYKY-2800型扫描电子显微镜的升级替代产品,是中科科仪公司在几十年的扫描电镜研究和生产基础上,引用现代最新计算机及数字图像技术,开发出的高性能产品。该产品除具有原KYKY电镜优良工艺和稳定可靠特性外,新增加了各种计算机自动控制及调节功能,尤其是采用了专用图像处理器进行图像分析处理,使扫描电镜与图像分析得到完美结合。在先进友好的WindowXP操作界面下,用户可以非常便捷地得到各种分析测试数据或实验报告。此外,中科科仪最专业、及时和全方位的售后服务体系也得到了广大KYKY电镜用户称赞!



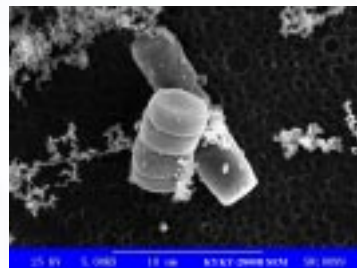
微器件  
Microapparatus



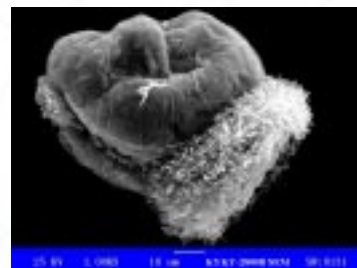
地质样品  
Geological specimen



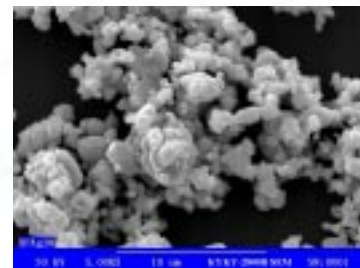
植物气孔  
Botanic stoma



硅藻  
Diatom



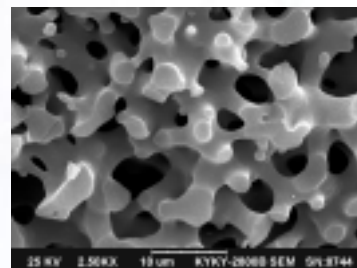
海洋生物  
Halobios



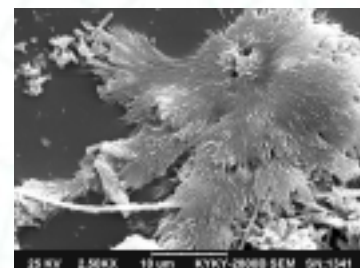
银粉  
Silver powder



海洋生物  
Halobios

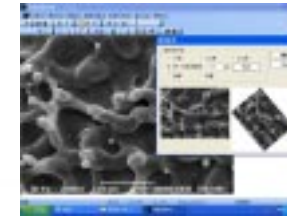


硅胶整体柱  
Silica gel



氧化铝结晶  
Alumina crystal

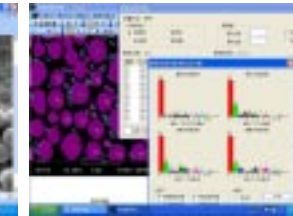
图像处理举例 Image Processing (选购 Option)



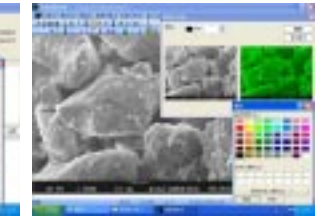
图像旋转  
Image rotation



距离测量  
Distance measure



粒度分析  
Particle analysis



伪彩色变换  
Pseudo-colour transform

Combining decades of experience in SEM research and manufacture with the latest computer and digital image analysis technology, KYKY people developed and produced the KYKY-2800B scanning electron microscope, which is the upgrade of KYKY-2800 SEM. KYKY-2800B SEM has not only perfect reliability and quality of traditional KYKY SEM products, but also the most up-to-date automatic computer control function. With a special KYKY patented image processing system, KYKY-2800B SEM is an ideal combination of SEM technology and image analysis system. In the friendly operating environment of WindowXP you will enjoy the ease and convenience of getting test results and analysis data in versatile forms including picture, table and curve, etc. In addition, KYKY's professional, timely and considerable after-sale services have been praised by our dear customers.

电镜消耗品 SEM Expendables



电镜附属设备 SEM Accessory Equipments

