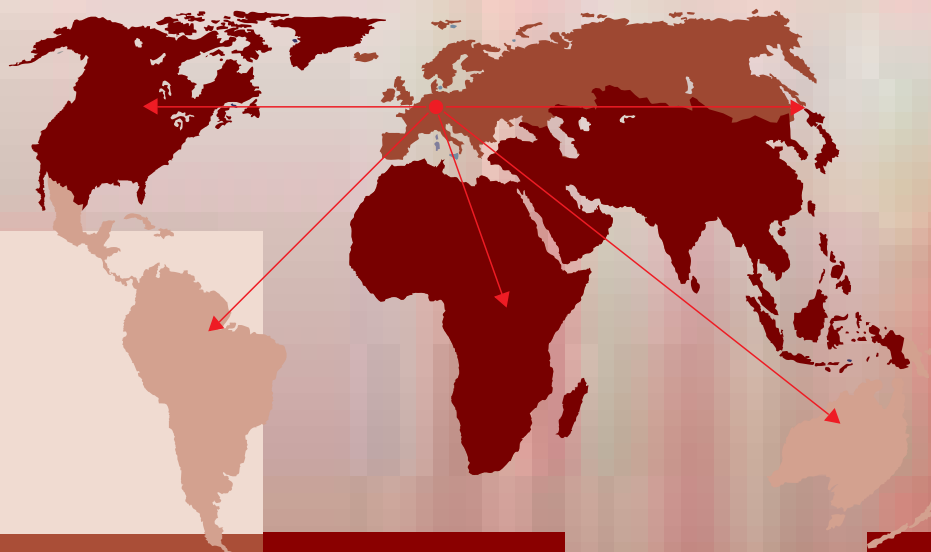


**Optical Control Systems GmbH**  
Wullener Feld 36  
58454 Witten, Germany  
Tel: +49 (0) 2302 956 22-0  
Fax: +49 (0) 2302 956 22-33  
e-mail: [info@ocsgmbh.com](mailto:info@ocsgmbh.com)  
<http://www.ocsgmbh.com>



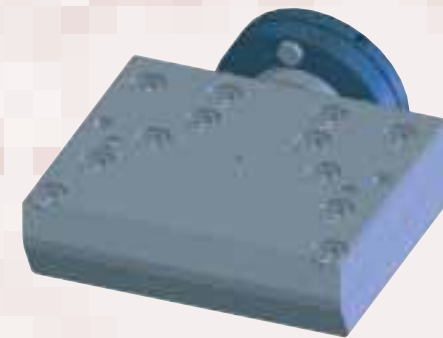
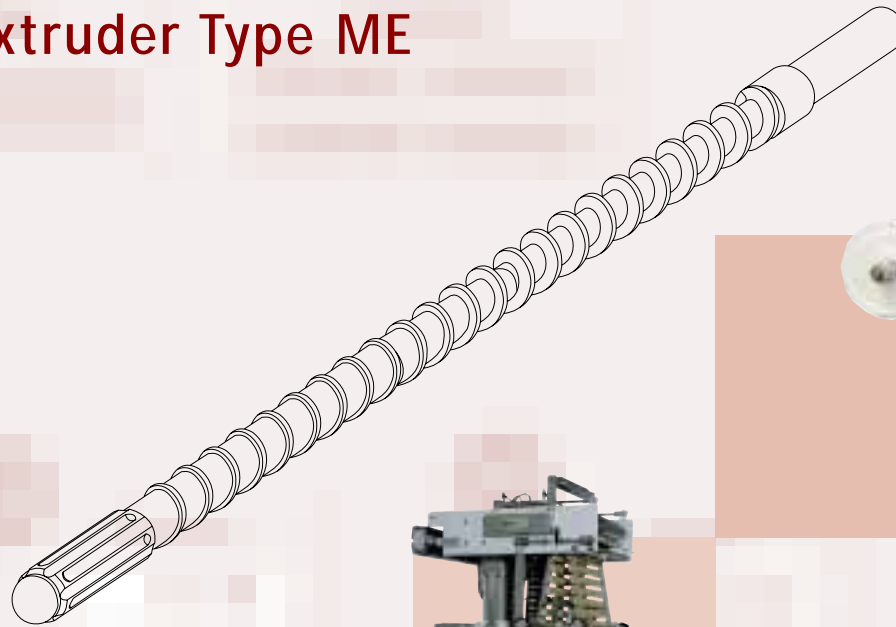
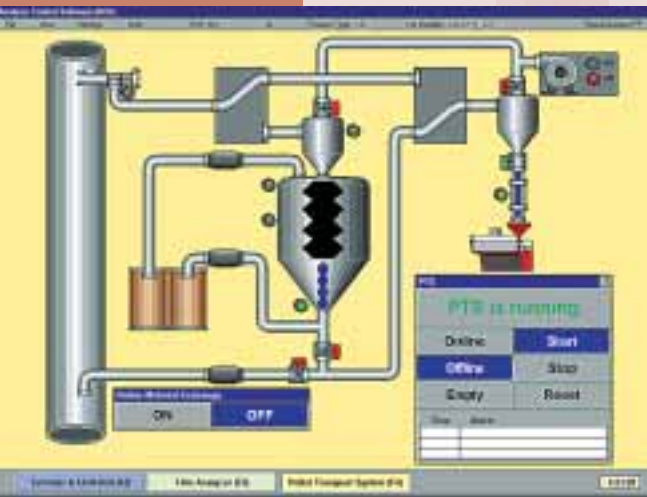
The Solution for the Polymer Industry



Measuring Extruder  
Type ME

The Original by OCS

# Measuring Extruder Type ME



## Measuring Extruder Type ME

## Performance features

The measuring extruder of the type ME is intended for the production of narrow films for laboratory and small-batch production. The optimum simulation of the production process is ensured thanks to the flexibility and modular concept. The same results achieved in the laboratory and on production extruders are a major contribution to quality assurance. All components are integrated in a sturdy steel frame which is height-adjustable. The control elements are ergonomically arranged at the operator's level in a swivel-type control panel. This ensures that the extrusion parameters set are always in view. In environments where there are no permanent staff, the optional remote control unit offers an ideal solution for monitoring and controlling the unit from a distance. All parameters are stored in a protocol file so that later analysis is possible at any time. When connected to a chill roll and winding system CR 7, CR 8 or CR 9, the extruder creates a self-contained basis for connecting optical measuring equipment. Furthermore, the modular concept permits the use of different optional accessories so that easy and convenient adaptation is always ensured.

- **Modular architecture**  
Simple possibility of expansion, easy adaptation
- **Selected use of material**  
All important contact surfaces are made of stainless steel
- **Universal die adapter**  
Use of different die heads possible
- **Robust drive technology**  
The high-performance drive is monitored electronically and mechanically
- **Temperature zones**  
Self-optimising PID controllers, continuous display and monitoring of all temperature settings. Max. 7 temp. ranges can be individually set
- **Self-diagnosis**  
Continuous display and monitoring of speed, torque, melt pressure and melt temperature
- **Operation**  
Ergonomic, swivel-type control panel
- **Alarm functions**  
Optical and acoustic alarms
- **Interfaces for external equipment**  
ACS remote control, Profibus, RS485

- **Process synchronisation**  
Linking of the measuring extruder to external measuring units such as Film Analyser software
- **Open database**  
The extruder parameters can be converted into all common file formats (Access, Excel ...)

## Fields of application

- **Quality Control in laboratory**
- **Small-batch production**  
The host of applications can be extended through the use of numerous accessories:
- **Extrusion of blown and cast film**
- **Development of new materials**
- **Quality Control of raw material production**
- **Quality Control of incoming goods**

## Accessories

- Online, offline and standby hopper
- 45° extrusion adapter
- Fix and flex lip die 50 – 300 mm
- Measuring ring with heater band
- Screws 1:1, 2:1, 3:1, 4:1 with & without mixing zone
- Other configuration on request

## Technical data

- **Drive technology**  
Servo-drive unit  
DC asynchronous motor 2.6 kW  
Speed range 0.2 ... 150 rpm  
Max. torque 100 Nm
- **Screw – individual configuration**  
Special steel, ionitrided  
Single-thread  
Feed zone  
Compression zone  
Metering zone  
Compression ratio

- **Temperature zones**  
Setting range 0 °C ... 400 °C  
Temperature sensors type FeCuNi, type J  
Max. working temperature 380 °C
- **Interfaces**  
Modbus, Profibus, Film Analyser Software
- **ACS remote control**  
Industrial computer Pentium IV technology  
Software ACS with Win. operating system
- **Main Power**  
Power supply 3 x 400 V (3 x 208 V)  
50 Hz (60 Hz) 15 KVA
- **Weight**  
Total weight without accessories approx. 350 kg
- **Tool kit**  
For maintenance and cleaning work

## OCS - Optical Control Systems GmbH

As one of the world's leading companies for optical quality control systems, OCS offers customised, all-round solutions for the fields of industrial image processing, optical measuring technology and automation. Our systems guarantee optimum perfection. Even the smallest defects in polymer products are recorded, localised and accurately analysed using high-precision cameras in conjunction with high-performance image processing. The application of OCS systems ranges from the laboratory to their complete integration into the production process.

Leading suppliers in the petrochemical and polymer industries benefit from the use of OCS products. Europe, USA, Canada, South America, Asia and Australia: Our system solutions are used successfully all over the world. With a highly skilled and innovative team of development and production engineers, OCS offers top-class technology and know-how worldwide - always up to date thanks to systematic research and development work. Our services include the production, supply and installation of our systems as well as the training of the machine operators.