



Accessories

for

Leica RM2200

Rotary Microtomes

Leica
MICROSYSTEMS

Original Leica Accessories: Highest Quality and Reliability

Offering the latest technology to users in the fields of medicine, science and industry ... this is a high-set goal Leica constantly fulfills with its microtomes and comprehensive range of accessories designed to make the user's work easier and more comfortable.

This brochure provides information on the entire range of accessories for the rotary microtomes Leica RM2235, RM2245, RM2255 and RM2265 – enabling users to individually configure their particular instruments according to specific needs and wishes.



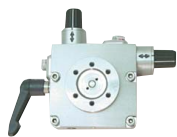
Leica RM2235
Manual
rotary microtome



Leica RM2245
Rotary microtome
with motorized
specimen feed



Fixture for specimen clamps, non-orienting
0502 38160



Fixture for specimen clamps, with precision orientation
0502 37717



Fixture for specimen clamps, orienting
0502 38949



Quick-clamping system
0502 37718



Standard specimen clamp
40 x 40 mm: 0502 37998
50 x 60 mm: 0502 38005



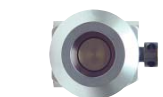
Universal cassette clamp
0502 37763



Universal cassette clamp, ice-cooled
0502 37793



Super-mega cassette clamp
0502 38967



Holder for round specimens without inserts
0502 38001

Holder for round specimens with 3 inserts
0502 38002



EM specimen holder fixture
0502 29968



Segment arc (indirect assembly)
0502 29969
(direct assembly)
0502 39731



Foil clamp, Type 1
0402 09307



Foil clamp, Type 2
0402 26922



V-insert
0502 38000

Inserts for holder for round specimens



ø 6 mm
0356 08322



ø 15 mm
0356 09200



ø 25 mm
0356 08320



EM flat specimen holder
0355 10405



EM universal specimen holder
0356 10868



Special wrench
0356 10869



EM flat specimen holder
0355 10405



EM universal specimen holder
0356 10868



Special wrench
0356 10869



Knife holder base
0502 37962



Backlighting
0502 38719



**Mains power supply
for RM2235 and RM2245**
0500 31244



Knife holder N
0502 37993



Knife holder NZ
0502 37994



**Knife holder E
for low-profile
disposable blades**
0502 37958



**Knife holder E
with water trough,
for low-profile
disposable blades**
0502 38961



Knife holder E-TC
0502 37997



Knife holder GD
0502 39052



Steel knives

Profile C, 16 cm: 0216 07100
Profile D, 16 cm: 0216 07132
Profile C, 12 cm: 0216 07092
Profile D, 12 cm: 0216 07130



Steel knives

Profile C, 16 cm: 0216 07100
Profile D, 16 cm: 0216 07132
Profile C, 12 cm: 0216 07092
Profile D, 12 cm: 0216 07130



Tungsten Carbide knives
Profile D, 16 cm: 0216 04813



**Low-profile
disposable blades
Type 819**
0358 38382



**High-profile
disposable blades
Type 818**
0358 38383



**Low-profile
disposable blades
Leica DB80L**
0358 37373



**High-profile
disposable blades
Leica DB80H**
0358 37372



**Low-profile
disposable blades
Type 819**
0358 38382



**High-profile
disposable blades
Type 818**
0358 38383



**Low-profile
disposable blades
Leica DB80L**
0358 37373



**High-profile
disposable blades
Leica DB80H**
0358 37372



TC 65 disposable blades
0216 26379



Diamond knives



Glass knives



Trimming insert
0502 33794



**Ralph insert for
Ralph glass knives**
25 mm: 0502 33795
38 mm: 0502 33796



Backlighting
0502 38719

Optional Accessories



Cooling device
0502 38325



Storage tray
0502 37932



**Combined carrier with
magnifier
and illumination***



**Microscope carrier with
fiber-optic light guide
and microscope**
0502 38463



Section waste tray, large
0502 37931



Arm rests
0502 38770



Magnifier
0502 29973



Section waste tray, small
0503 39060



Foot switch
0502 38257




**Leica LN22
Low-temperature
sectioning system**
0378 39166




**Leica CLS100
cold light source***



Hand rests
0502 38768

 Leica RM2235

 Leica RM2245

 Leica RM2255

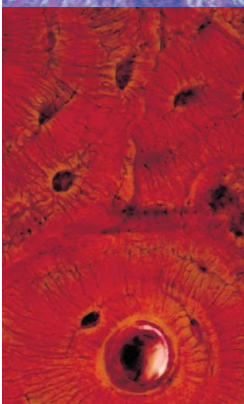
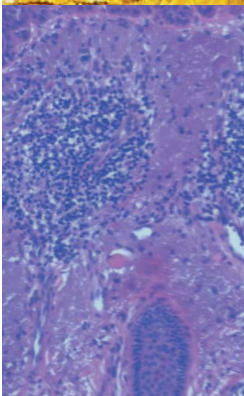
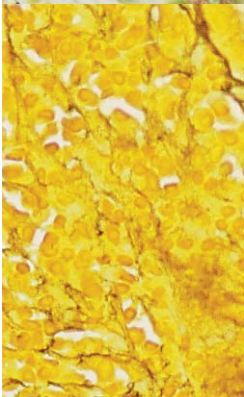
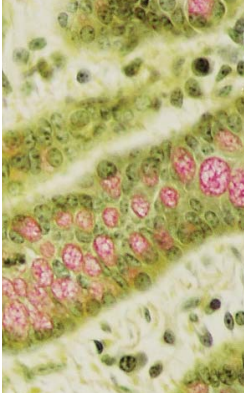
 Leica RM2265

 **Compatible accessory**

 **Recommended accessory**

 **Included in standard delivery**

* Order number
depending on
voltage of instrument.
See product catalog.



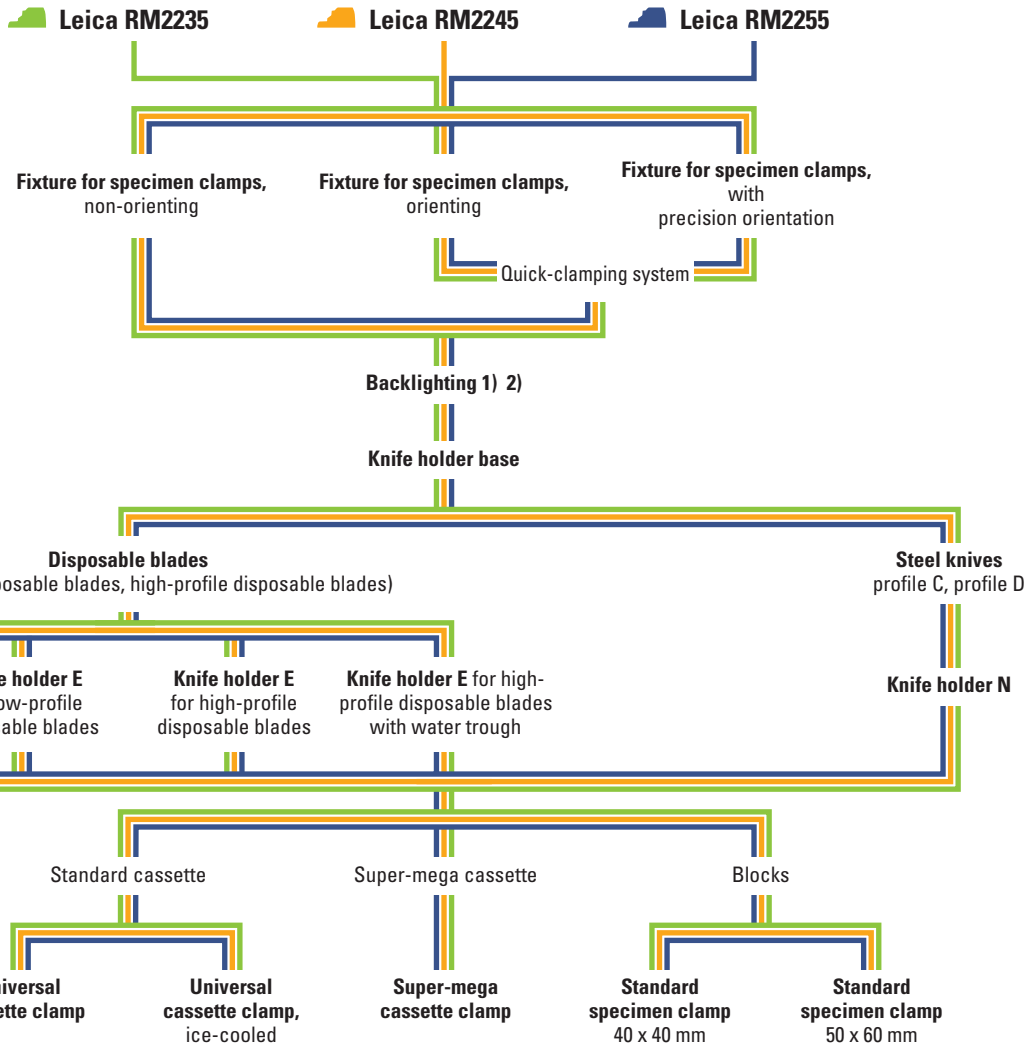
Leica RM2255
Motorized
rotary
microtome



Leica RM2265
Fully-motorized
rotary
microtome

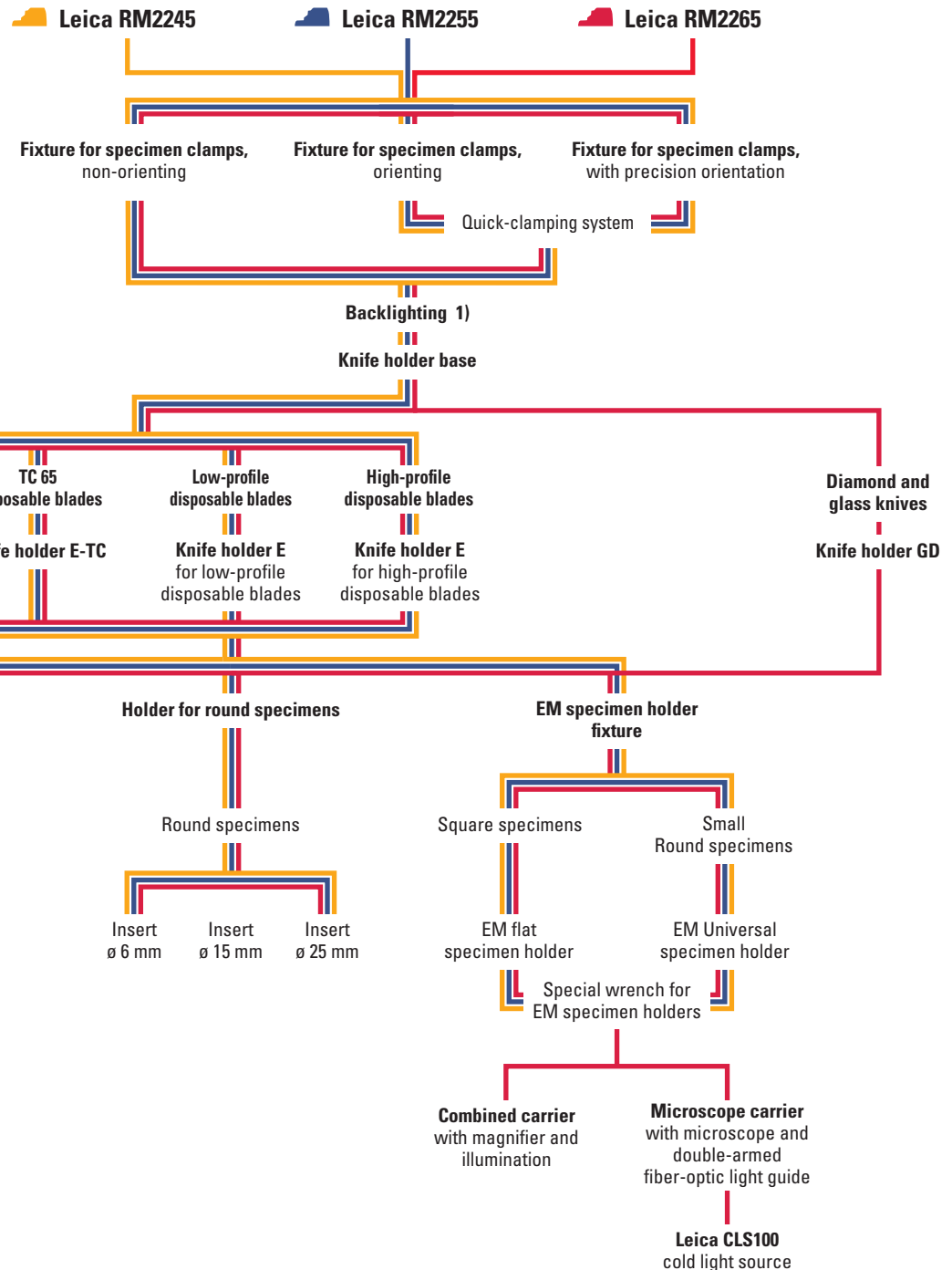


Sectioning Paraffin-embedded Specimens



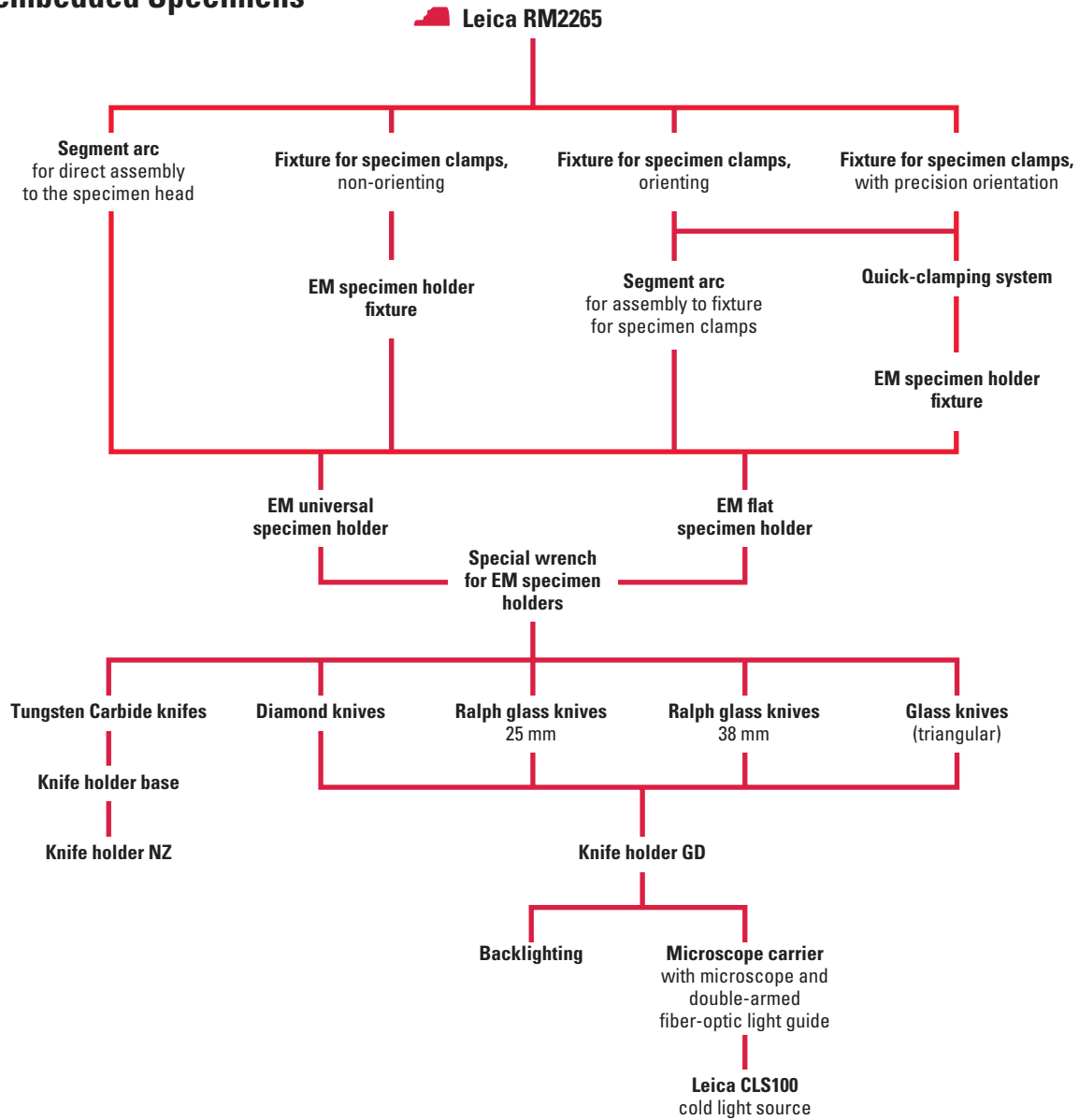
- 1) for Leica RM2235 and RM2245
please order also the mains power
supply unit
- 2) not recommended for use with
super-mega cassette

Thin Sectioning of Plastic-embedded Specimens

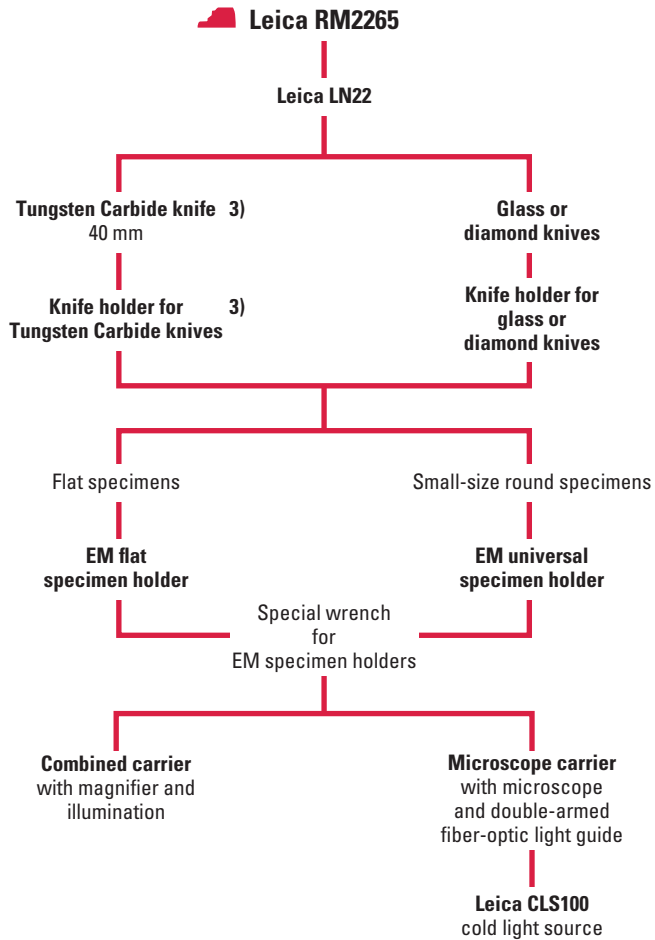


1) for Leica RM2245 please order also the mains power supply unit

Semi-thin Sectioning of Plastic-embedded Specimens



Low-Temperature Sectioning



3) Included in standard delivery



Leica LN22

The low-temperature sectioning system Leica LN22 has been specially designed for use with the Leica RM2265 rotary microtome. Sections of uncompromising quality can be obtained from critical specimens in the fields of biology, medicine and industry – at section thickness settings between 0.25 and 100 μm and working temperatures as low as $-150\text{ }^{\circ}\text{C}$.

For further information please contact your local Leica sales company

Australia:	Gladesville/NSW	Phone +61 2 9897 9700	Fax +61 2 9817 8358
Austria:	Vienna	Phone +43 1 486 80 50	Fax +43 1 486 80 50 30
Canada:	Richmond Hill/Ontario	Phone +1 905 762 2000	Fax +1 905 762 8937
Denmark:	Herlev	Phone +45 4454 0101	Fax +45 4454 0111
France:	Rueil-Malmaison Cedex	Phone +33 1 4732 8585	Fax +33 1 4732 85 86
Germany:	Bensheim	Phone +49 6251 136 0	Fax +49 6251 136 155
Italy:	Milan	Phone +39 0257 486.1	Fax +39 0257 40 3273
Japan:	Tokyo	Phone +81 3 5435 9603	Fax +81 3 5435 9615
Korea:	Seoul	Phone +82 2 514 6543	Fax +82 2 514 6548
Netherlands:	Rijswijk	Phone +31 70 4132130	Fax +31 70 4132139
People's Republic of China:	Hong Kong	Phone +852 2 564 6699	Fax +852 2 564 4163
Portugal:	Lisbon	Phone +351 1 388 9112	Fax +351 1 385 4668
Singapore:	Singapore	Phone +65 6779 7823	Fax +65 6773 0628
Spain:	Barcelona	Phone +34 93 494 9530	Fax +34 93 494 9532
Sweden:	Sollentuna	Phone +46 8 6254 545	Fax +46 8 6254 510
Switzerland:	Glattbrugg	Phone +41 1 809 34 34	Fax +41 1 809 34 44
United Kingdom:	Milton Keynes	Phone +44 1 908 246246	Fax +44 1 908 609992
USA:	Bannockburn/Illinois	Phone +1 847 405 0123	Fax +1 847 405 0164

...and more than 100 national distributors.

Leica Microsystems Nussloch GmbH
Heidelberger Strasse 17-19
D-69226 Nussloch
Telephone: (06224) 143-0
Fax: (06224) 143 200
e-mail: histo_info@leica-microsystems.com
www.leica-microsystems.com



Leica
MICROSYSTEMS