

**KYKY-3800B型全计算机控制扫描电子显微镜**  
**KYKY-3800B Computerized Scanning Electron Microscope**

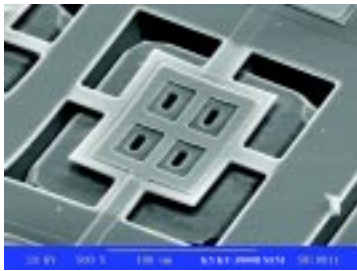


KYKY

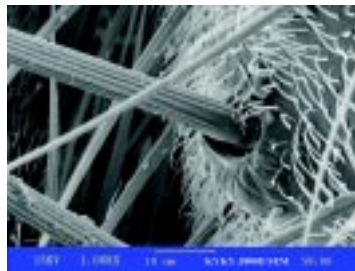
通过 ISO9001 质量体系认证



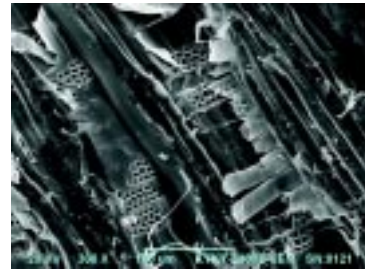
伴随计算机的日益普及和数字图像技术的不断快速发展，扫描电子显微镜的性能越来越好，同时操作也变得越来越简单。KYKY-3800B 型扫描电子显微镜的智能化操作软件将帮助您一步步完成电镜的调节操作，而您只需轻点鼠标。即使不恰当的操作也不会给仪器带来损害，因为“冲突功能互锁机制”将保证您的仪器的安全。不论是电镜操作高手还是初学者，都会发现 KYKY-3800B 型扫描电镜的易用性，从中得到乐趣。同 KYKY 所有其他扫描电镜一样，KYKY-3800B 型扫描电镜不仅操作简单，而且利用 WindowsXP 操作系统丰富的软件资源，可以直接输出带有文字、图表及图像的测试报告，大大提高了工作效率和工作质量。



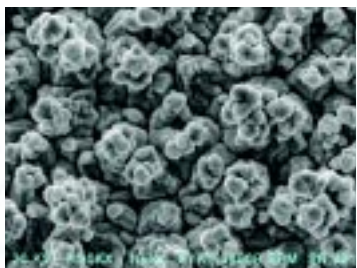
半导体器件  
Cemiconductor



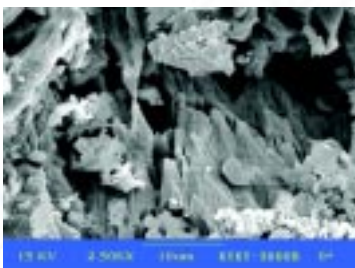
飞虫纤毛  
Cilium of insect



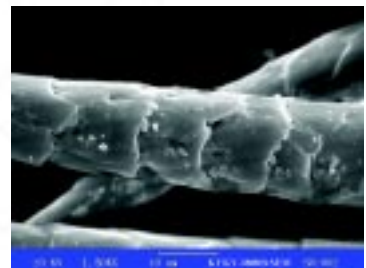
木材  
Timber



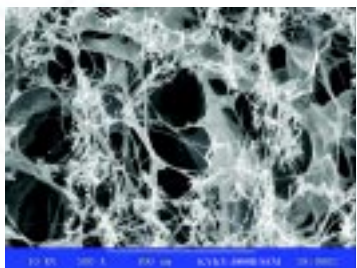
铜箔  
Copper



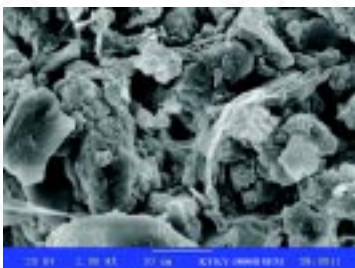
恐龙化石  
Dinosaur fossil



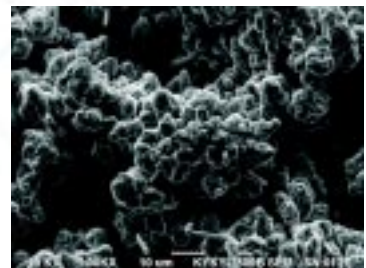
羊绒  
Cashmere



有机膜  
Organic membrane



陶瓷断口  
Ceramic section



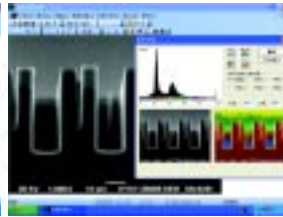
小钢板特征区  
Characteristic region of armor plate



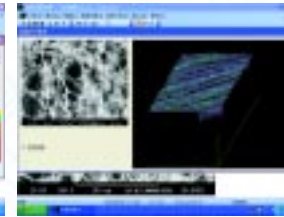
图像处理举例 Image Processing (选购 Option)



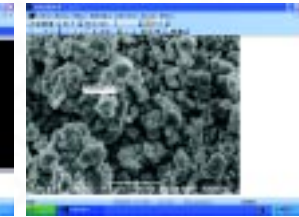
边缘提取  
Edging



彩色分割  
Color segmentation



面强度分析  
Analysis of map intensity



添加文本标记  
Insert text marks

With the popularization of computer utilization and the development of digital image technology, performances of scanning electron microscope are becoming better and better. Intellectualized operate software of KYKY-3800B SEM can help you accomplish all operation step by step. What you need to do is only to click the mouse. Thanks to the protection of "Conflict Functions Being Interlocked", even if an operation mistake occurred the instrument wouldn't be damaged. Whoever you are, a veteran or novice, will feel excellent ease and convenience of KYKY-3800B SEM operation. Similar to the other KYKY SEMs, besides the merit of easy operation, utilizing sufficient software resource of WindowsXP operating system, KYKY-3800B SEM can output testing report with words, tables and pictures, etc. so that higher efficiency and quality in work will be obtained.

电镜消耗品 SEM Expendables



电镜附属设备 SEM Accessory Equipments



冷水机  
Water Chiller



小型离子溅射仪  
Ion Sputtering Coater



多功能试样表面处理机  
Multifunctional Specimen Coater

## 技术性能指标

- ★ **分辨率**  
4.5nm (钨丝阴极)
- ★ **放大倍数**  
15 倍~250,000 倍
- ★ **电子光学系统**  
电子枪: 发叉式钨丝阴极  
加速电压: 0~30kV  
透镜系统: 三级电磁透镜  
物镜光阑: 三个光阑可在真空外选择调节
- ★ **样品室**  
六个接口, 可接 WDS、EDS、BSE 等多种附件和探测器
- ★ **样品台**  
标准样品台位移:  $X=50\text{mm}, Y=50\text{mm}, Z=25\text{mm},$   
 $T=-5^{\circ} \sim +90^{\circ}, R=360^{\circ}$   
大样品台位移:  $X=80\text{mm}, Y=50\text{mm}, Z=30\text{mm},$   
 $T=0^{\circ} \sim +90^{\circ}, R=360^{\circ}$
- ★ **计算机系统**  
PC机, 基于Microsoft™Windows™XP软件操作系统, 全中文菜单
- ★ **图像显示与观察**  
数字图像, 1024 × 768 显示方式, 17" 彩色显示器
- ★ **扫描方式**  
全幅、面、线、点、选区双放大及屏幕分割
- ★ **电镜操作控制软件系统**  
全新设计的操作软件, 全中文菜单, 只需使用鼠标和键盘即可完成电镜的全部操作。并且具有多种自动功能, 能够记忆、存储电镜的运行状态等。
- ★ **图像处理及分析**  
图像增强 阈值分割 粒度分析  
形态学变换 图像灰度直方图显示  
灰度图像的伪彩色变换
- ★ **图像输出与记录**  
高分辨 CRT 照相 (2500 线);  
支持多种图像文件格式, 支持视频打印机及各种标准接口打印输出设备
- ★ **真空系统**  
全自动高速扩散泵真空系统 (可选涡轮分子泵真空系统)

## SPECIFICATIONS

- ★ **Resolution**  
4.5nm (Tungsten filament)
- ★ **Magnification**  
 $15 \times \sim 250,000 \times$
- ★ **Electron Optical System**  
Electron gun: Tungsten cathode  
Accelerating voltage: 0~30kV  
Lens system: Three electron magnetic lens system  
Objective lens aperture: Three apertures selectable
- ★ **Specimen Chamber**  
Six ports for WDS, EDS, BSE detectors and other attachment installation
- ★ **Specimen Stage**  
Standard Stage Displacement:  $X=50\text{mm}, Y=50\text{mm}, Z=25\text{mm},$   
 $T=-5^{\circ} \sim +90^{\circ}, R=360^{\circ}$   
Large Stage Displacement:  $X=80\text{mm}, Y=50\text{mm}, Z=30\text{mm},$   
 $T=0^{\circ} \sim +90^{\circ}, R=360^{\circ}$
- ★ **Computer System**  
Microsoft™ Windows™ XP operation system
- ★ **Image Display**  
Digital image, 1024 × 768 frame and display resolution  
17" LCD monitor
- ★ **Scanning Mode**  
Plane, line and spot scan. Dual magnification and screen split
- ★ **Operate And Control Software**  
The whole new operate software contributes to excellent convenience and easiness of SEM operation by using only mouse and keyboard. Parameters of SEM operation can be stored and easily managed.
- ★ **Image Processing And Analyzing**  
Image enhancement Threshold transformation  
Particle statistic analysis Morphology transformation  
Gray level histogram display Pseudo-colour transform for gray scale image
- ★ **Image Output And Record**  
Ultra high-resolution(2500 lines) scope for photographing  
Versatile image document formats, support digital monochrome printer and versatile print-out equipments with standard interface
- ★ **Vacuum System**  
Fully automatic high speed diffusion pump vacuum system (Turbo molecular pump optional)