



KITTIWAKE
monitoring innovation



ANALEXpql

PQ® Technology Ferrous Debris Monitor

The ANALEX_{pqL} is a completely new instrument developed as a replacement for the widely used pqM and pqA instruments.

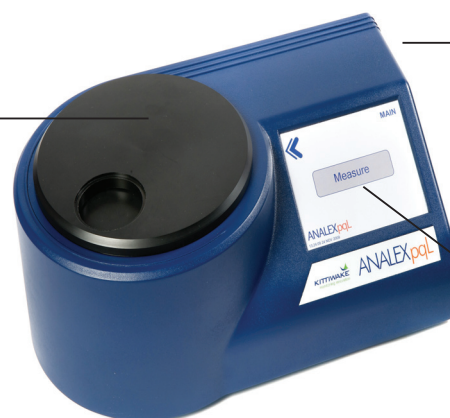
Using new hardware, upgraded firmware and the latest manufacturing techniques, this highly accurate instrument is a perfect addition to the modern used oil analysis laboratory.

The ANALEX_{pqL} Ferrous Debris Monitor provides the most accurate means of detecting and measuring ferrous wear debris in lubricating oils, hydraulic oils and greases. This rugged, compact and stable Instrument delivers retrievable data quickly and simply, ensuring fast, accurate and consistent management of oil samples.

Features

- Increased Accuracy and Repeatability
- Improved Reliability and Durability
- Measurement Cycle Time Halved
- Reduced Footprint
- Sample Container Flexibility
- Backwards Data Compatibility
- PC and Ethernet Connectivity
- 4 x USB Ports (For Memory Stick, Printer, Keyboard, Mouse etc.)

Stepper Motor Drive,
Halves Measurement
Time



Array of Communication
Interfaces inc; RS232
Ethernet & USB

Anti-Glare Touch Screen, for
Simple Instructions and Ease
of Operation

Benefits

Unrestricted by particle size or distribution the ANALEX_{pqL} is a proven monitor for accurate and reliable reporting of wear condition. Due to its speed and ease of use it is an extremely effective screening tool for multiple samples prior to further analysis by ICP or XRF.

To your customers, lost production and expensive capital equipment replacement are major costs associated with any catastrophic failure of machinery, the prevention of which is crucial for optimal operational performance. By reporting ferrous debris levels, worn components can be identified early and replaced before any serious damage occurs. Production can be maintained, machinery life extended and the return on capital investment increased.

Specifications

| | |
|-----------------------|------------------------------------|
| Repeatability: | ±4PQ or ±1% [whichever is greater] |
| Resolution: | 1 PQ |
| Cycle Duration: | 7 Seconds |
| Minimum PQ Detection: | 5 PQ |
| Size & Weight: | 370mm x 230mm (3.6kg) |

| Product Code | Description |
|--------------|---------------------------------------|
| FG-K17000-KW | ANALEX _{pqL} - PQ Instrument |



Kittiwake Developments Ltd

3-6 Thorgate Road Littlehampton
West Sussex, BN17 7LU United Kingdom
Tel: +44 (0) 1903 731470
Email: sales@kittiwake.com
Web: www.kittiwake.com

Kittiwake GmbH

Marie-Curie-Str. 5
25337 Elmshorn Germany
Tel: +49 (4121) 463948
Email: info@kittiwake.de
Web: www.kittiwake.de

Kittiwake Asia Pacific

E-8-6 Block E Megan Avenue 1
189 Jalan Tun Razak Kuala Lumpur 50400
Malaysia
Tel: +60 (3) 2333 8906
Email: zainudiny@kittiwake.com
Web: www.kittiwake.com

Kittiwake Proactive Technologies Pvt Ltd

405 Ansals Majestic Tower 17
Block G1 Vikas Puri Community Centre
New Delhi 11008 India
Tel: (+91) 11 65356292
Email: deepaks@kittiwake.com

Kittiwake Americas

4651 Woodstock Rd. Suite 208-214
Roswell GA 30075
Tel: +1 (678) 905-5630
Email: keithm@kittiwake.com
Web: www.kittiwake-americas.com

