

# TAR II

Advanced friability & abrasion testing



**ERWEKA**

# The TAR II

## Intelligent, upgradeable friability & abrasion testing.

The TAR II is the next step in intelligent, upgradeable friability & abrasion testing according to USP/EP/JP. Its unprecedented flexibility and intelligent features such as TestAssist and direct balance data transfer make TAR II the most advanced friability tester on the market.

The 7" high resolution touch display with a modern user interface focuses the user on the most important task the new TAR II has to fulfill - 100% USP/EP compliant friability testing. With the automatic calculation features of the TestAssist, the user is guided step-by-step through the testing process as quickly as possible and with its advanced balance connection feature, data is directly transmitted and calculated.

In addition to its ease of use, the TAR II is the most flexible friability tester we ever built. TAR II can be configured with one or two test stations and the optional intelligent balance feature - and the best part - all can also be upgraded at a later time point! A stand for the 10° position required by USP/EP is also included.



One or two test stations



100% USP/EP/JP compliant



Upgradeable at any time



Intuitive touch interface



Intelligent balance connection with data transfer



TestAssist with automatic calculation



### TestAssist with automatic calculation

TestAssist, our testing assistant has been customized to make friability and abrasion testing as easy and fast as never before. With its three testing modes - revolutions, time and USP test, TestAssist offers the user flexible testing options. In all three modes, TestAssist ensures that all parameters are set up correctly. In the USP testing mode, TestAssist automatically calculates the results - and even triggers the repetition of the test according to USP guidelines.

TestAssist saves time and ensures parameter validity in each test.

### Upgradeability

TAR II can be configured with 1 or 2 test stations - but it can also be upgraded from 1 to 2 afterwards. The optional, intelligent balance feature can also be upgraded further down the line.

This makes TAR II the most flexible and future-proof friability & abrasion tester we ever built.



### Direct balance connection

The new, optional direct balance connection offers seamless integration of supported balance into TestAssist. When setting up a test with TestAssist and a connected balance, TestAssist prompts the user to place the samples on the balance. It then receives the balance data fully automatically, using it for its fully automated calculation.

This further speeds up the testing and eliminates another possible error source.

# One TAR II - many upgrades!

## Upgradeability of the TAR II

The TAR II is our most flexible friability tester ever. It can start as a simple one teststation friability tester and can later be easily upgraded with a second teststation. We also offer different kinds of drums - for friability and for abrasion testing.

But that is not all: The balance feature can also be added later, if required. Simply enter the feature activation code, add a supported balance (either purchased from ERWEKA or already available in the lab) and start testing with TestAssist and the automatic data transfer from the balance!

Upgrades	Compatible
TAR II 2nd teststation	✓
TAR II external balance feature	✓
Sartorius Praktum 124-1S	✓
Sartorius Quintix 124-1 CEU	✓
Mettler Toledo ME54	✓



One TAR II - many upgrades



Connect a supported balance

# Automatic weight data transfer

## Fast and error-proof weight data

To speed up the test process and eliminate manually weight data errors, we connected the balance directly to the TAR II and integrated the weight data processing directly into TestAssist.

The process is simple - during USP tests, TestAssist prompts the user to place the sample on the balance and automatically receives the weight data before continuing with the test. Thanks to this feature, TestAssist also automatically detects when the test has to be repeated according to USP.



# 1, 2, Test!

## The TAR II TestAssist

The touch interface of the TAR II focuses the user on the most important task to be done with the TAR II: friability testing. The central part is the TestAssist, an intelligent assistant with realtime feasibility checks that provides support and guarantees the conformity of the entered parameters according to USP/EP/JP. Friability testing thus becomes simple and safe. But we didn't stop at TestAssist - all other functions, such as the control panel, the qualification menu or the service menu, are also designed to connect user and hardware as quickly as possible.



Testing easily done step-by-step



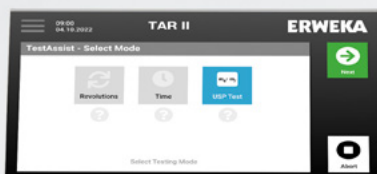
Parameterisation within conform ranges

### TestAssist - friability testing easier than ever!

TestAssist is a comprehensive, yet simple wizard for the quick execution of friability testing. The user is guided step by step through the parameterisation, whereby incorrect entries are prevented by TestAssist. As soon as the friability test is running, the test screen displays all important status information about the test at any time.

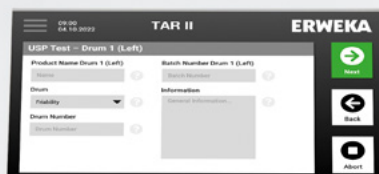
When testing according to USP methods, TestAssist prompts the user to enter the required values. If the balance feature is activated, TAR II with TestAssist automatically fetches the weight data and automatically calculates the results.

With the help of the intelligent TestAssist, friability testing is as easy and fast as ever!



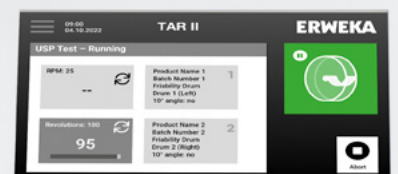
1

ERWEKA



2

ERWEKA



Test!

ERWEKA

## Reports

TAR IIs' TestAssist automatically generates reports after each test. These reports can be automatically printed. The last 10 test reports can be recalled and printed out again.



## DirectHelp at the tap of a button

The DirectHelp feature is implemented throughout all of the TAR II touch interface. At the touch of a button, the user can easily access context relevant help within milliseconds.

## Direct access for customer service

The service menu gives the user direct access to the most important hardware functions and information of the TAR II. Serial number and firmware version can be quickly called up for service cases, and maintenance can be carried out faster and more efficiently.



## Qualification made easy

Thanks to the new qualification function, qualifying the TAR II is easy. To do so, simply enter the qualification menu and follow the instructions.

# Technical data

TAR II	
Height, width, depth	278 mm / 237 mm / 370 mm
Weight	10 kg (without drums), 11.7 (1 drum), 13.4 (2 drums)
Voltage	100-240 V; 50-60 Hz
Fuses	2 x 3.15 A
Protection class	I/EN 61140
Protection type	IP 21/IEC 529
Number of drum receptions	1 / 2
User interface	Touchscreen
Speed control	yes
Speed range	20 to 100 min <sup>-1</sup>
Test duration: running time	Continuously adjustable, 30 s to 9 h 59 min 59 s
Test duration: Number of revolutions	Continuously variable, 1 to 9999 revolutions
Interfaces	LAN, 2 USB, RS-232
Compatible printers	<ul style="list-style-type: none"> <li>I Brother HL-L2370DN</li> <li>I Canon i-sensys LBP162dw</li> <li>I HP LaserJet Pro M203dne</li> <li>I HP LaserJet Pro M402dne</li> <li>I Kyocera ECOSYS P2235dn</li> <li>I Oki 431d</li> <li>I Oki B432dn</li> <li>I Martel MCP7870</li> </ul>
Ambient temperature in operation	+10 °C to +30 °C (Ambient temperature at least 5 °C lower than test temperature)
Storage and transport temperature	-10 °C to +55 °C
Relative humidity	25 to 80 % non-condensing
Airborne sound emission	The A-rated emission sound pressure level at the workplace is less than or equal to 70 dB(A), provided that it is not influenced by other equipment or similar in the installation environment.

## ERWEKA GmbH

Pittlerstr. 45  
63225 Langen  
Germany

E-Mail: [sales@erweka.com](mailto:sales@erweka.com)  
Phone: +49 6103 92426-200  
Fax: +49 6103 92426-999

Technical specifications of products described are stated without warranty and subject to change at any time without further notice. **v.1.1.8.23**

# ERWEKA