

Rapid, Label-free, and Efficient Isolation of Extracellular Vesicles (EVs).



ExoDiscovery[®]

ExoDiscovery[®] System

ExoDiscovery system is ideal for rapid, label-free, and efficient isolation of intact extracellular vesicles (EVs) from biological samples.

The enriched EVs with high yield and purity are then readily processed for downstream analysis such as NTA, SEM, TEM, western blotting, ELISA, PCR, or NGS for the application of precision science to precision medicine.



ExoDiscovery[®] & ExoDisc[®]



- Small volume
- Efficient size based filtration by FAST

ExoPRISM[®]



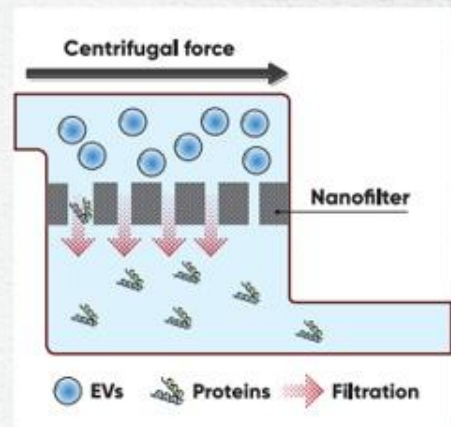
- Large volume
- Precipitation by coagulation of EV colloid

Core Technology

ExoDisc[®]

Tangential flow nanofiltration on centrifugal microfluidic device

The patented FAST (Fluid-Assisted Separation Technology) allows gentle (<500 x g) but efficient filtration under greatly reduced filtration pressure over the nanofilter.

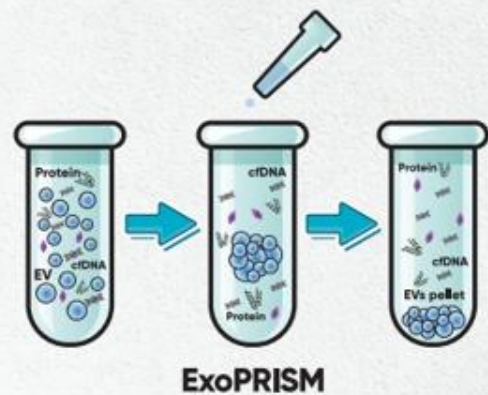


ExoPRISM[®]

Precipitation by coagulation of EV colloid in low-speed spin

ExoPRISM Precipitation by coagulation of EV colloid in low-speed spin EV particles are dispersed in the biofluid made by the balance with surface charge and polymers like many colloids.

Reagent B (for CCS Urine) and Reagent P (for Plasma Serum) of ExoPRISM shifts the balance by changing the ionic strength of solution to rapidly form precipitates at low-speed centrifugation.

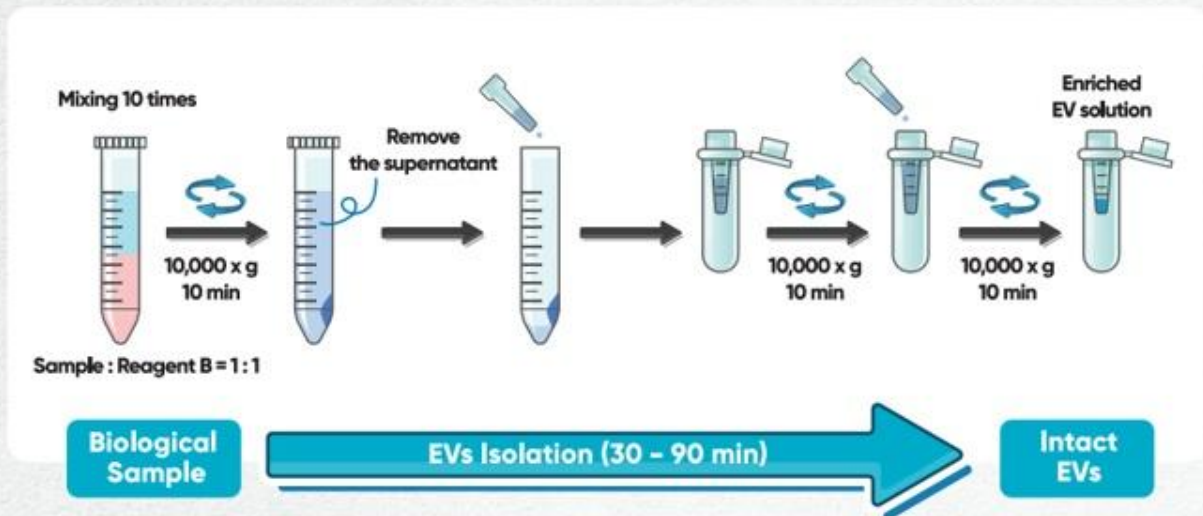


Simple Workflow

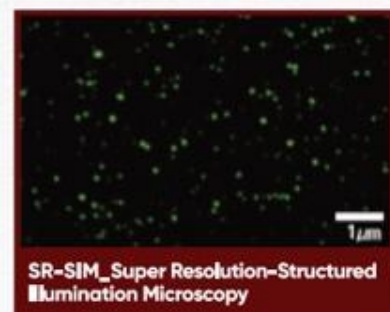
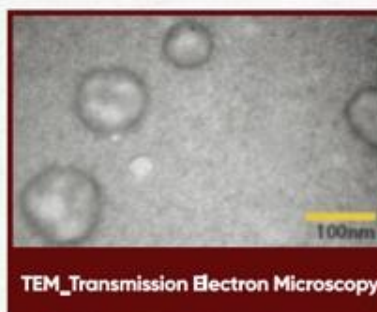
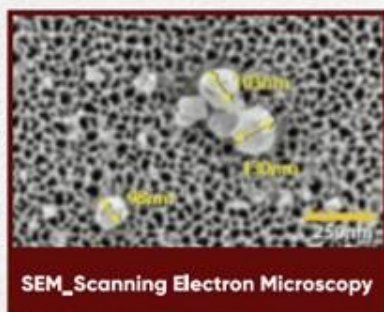
ExoDisc®













ExoPRISM®



Intact EVs



User Scenario

	ExoDisc -D20	ExoDisc -D100	ExoPRISM for CCS/Urine	ExoPRISM for Plasma/Serum
Product				
Sample Type	CCS Urine	Plasma Serum	CCS Urine	Plasma Serum
Sample Volume	 ≤ 4 mL	 ≤ 0.1 mL	 ≤ 100 mL	 ≤ 20 mL
Time*1	30 min	1 hr	1 hr	1.5 hr
Platform	ExoDiscovery 		Centrifuge 	

*1 The operation time depends on the EV concentration in the sample.



南京覃思科技有限公司(韩国LabSpinner外泌体提取纯化仪中国区代理)
 总部地址: 南京市鼓楼区中山北路 281 号新城市虹桥中心 2-728B
 分公司地址: 北京市海淀区上地三街金融科贸大厦 719
 电话: 025-85432178, 85432278, 83353938; 010-62908712
 邮箱: sales@tansi.com.cn 网址: www.tansi.com.cn