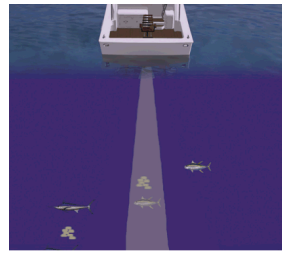
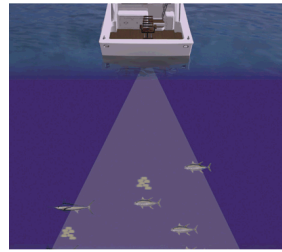


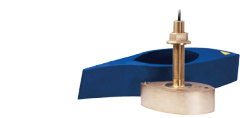
Several Installation Methods for Wide Beam CHIRP Transducers



Current high frequency CHIRP transducers have an 8 degree beam width that changes with the frequency.



New wide beam CHIRP transducers have a constant 25 degree beam width across the entire frequency.



Thru-Hull B275LHW

- CHIRPs across the following bandwidths:
 - Low Frequency 42 to 65 kHz
 - 25° to 16° Beamwidth
 - High Frequency 150 to 250 kHz
 - 25° Constant Beamwidth
- 8 internal Broadband Ceramics
- Depth & fast response water-temperature sensor
- Bronze housing with High-Performance Fairing
- Boat Type:
 - Sportfishing
 - Commercial
- Hull Type
 - Fiberglass, Wood, Metal
- Can retrofit to existing B260 install



Thru-Hull R109LHW

- CHIRPs across the following bandwidths:
 - Low Frequency 38 to 75 kHz
 - 19° to 10° Beamwidth
 - High Frequency 150 to 250 kHz
 - 25° Constant Beamwidth
- 16 internal Broadband Ceramics
- Depth & fast response water-temperature sensor
- Urethane housing with stuffing tube and high-performance fairing
- Boat Type:
 - Sportfishing
 - Commercial
- Hull Type
 - Fiberglass, Wood, Metal
- Can retrofit to existing R99 install



Thru-Hull R509LHW

- CHIRPs across the following bandwidths:
 - Low Frequency 28 to 60 kHz
 - 23° to 9° Beamwidth
 - High Frequency 150 to 250 kHz
 - 25° Constant Beamwidth
- 25 internal Broadband Ceramics
- Depth & fast response water-temperature sensor
- Epoxy housing with stuffing tube and high-performance fairing
- Boat Type:
 - Sportfishing
 - Commercial
- Hull Type
 - Fiberglass, Wood, Metal
- Can retrofit to existing R209 install



Pocket/ Keel-Mount PM111LHW

- CHIRPs across the following bandwidths:
 - Low Frequency 38 to 75 kHz
 - 23° to 9° Beamwidth
 - High Frequency 150 to 250 kHz
 - 25° Constant Beamwidth
- 16 internal Broadband Ceramics
- Depth & fast response water-temperature sensor
- Urethane housing
- Boat Type:
 - Sportfishing
 - Commercial
- Hull Type
 - Fiberglass only



Transom-Mount TM275LHW

- CHIRPs across the following bandwidths:
 - Low Frequency 42 to 65 kHz
 - 19° to 10° Beamwidth
 - High Frequency 150 to 250 kHz
 - 25° Constant Beamwidth
- 8 internal Broadband Ceramics
- Depth & fast response water-temperature sensor
- Urethane housing and stainless steel mounting bracket
- Boat Size:
 - 8 m to 12 m (25' to 40')
- Boat Type:
 - Outboards, I/O
- Hull Type
 - Fiberglass, Wood, Metal
- Can retrofit to existing TM258 & TM260 bracket



Tank-Mount CM275LHW

- CHIRPs across the following bandwidths:
 - Low Frequency 42 to 65 kHz
 - 25° to 16° Beamwidth
 - High Frequency 150 to 250 kHz
 - 25° Constant Beamwidth
- 8 internal Broadband Ceramics
- Depth & fast response water-temperature sensor
- Urethane housing
- Boat Type:
 - Sportfishing
 - Commercial
- Hull Type
 - Fiberglass, wood, Tank
- Cannot be pocket mounted
- Recessed design ideal for tank mount installation



Tank-Mount/Pocket/ Keel Mount CM599LHW

- CHIRPs across the following bandwidths:
 - Low Frequency 28 to 60 kHz
 - 23° to 9° Beamwidth
 - High Frequency 150 to 250 kHz
 - 25° Constant Beamwidth
- 25 internal Broadband Ceramics
- Depth & fast response water-temperature sensor
- Epoxy housing
- Boat Type:
 - Sportfishing
 - Commercial
- Hull Type
 - Fiberglass only
 - Tank Installation
- Recessed design ideal for tank mount installation



Pocket/Keel Mount PM275LHW

- CHIRPs across the following bandwidths:
 - Low Frequency 42 to 65 kHz
 - 25° to 16° Beamwidth
 - High Frequency 150 to 250 kHz
 - 25° Constant Beamwidth
- 8 internal Broadband Ceramics
- Depth & fast response water-temperature sensor
- Bronze housing
- Boat Type:
 - Sportfishing
 - Commercial
- Hull Type
 - Fiberglass only
- Flat face design ideal for pocket/keel-mount installation



Tilted Element B175W - 0°, 12° & 20°

- CHIRPs across the following bandwidths:
 - High Frequency 150 to 250 kHz
 - 25° Constant Beamwidth
- 1 internal Broadband Ceramic
- Available in 0°, 12° & 20° tilted versions
- Depth & fast response water-temperature sensor
- Bronze housing
- Boat size:
 - Up to 11 M (36')
- Hull Type
 - Fiberglass, wood

2X Coverage Under the Boat!

Transducer/Beamwidth*	Depth	Coverage
B265LH/ 10° to 6°	50 ft	9 ft
	100 ft	17 ft
	300 ft	52 ft
B275LHW/ 25°	50 ft	22 ft
	100 ft	44 ft
	300 ft	133 ft

*High frequency beamwidth only

