

全自动培养基分装系统

Automated Media Dispensing System



全自动 AMD 系列 Automated AMD series

高品质的培养基，对实验室的实验结果起到非常重要的作用，各种无菌培养基的自动分装非常必要。保证实验室稳定可靠的实验数据的同时，还要提高实验室的效率和降低人力成本。AMD 系列全自动培养基分装系统专门解决实验室培养基制备问题。

For laboratories involved in culture media preparation, sterile dispensing is essential for successful downstream applications and to meet quality requirements. Furthermore, as a growing need for cost saving and performance improvements exists, a reliable work flow is necessary. These requirements create a strong demand for an automated medium dispensing system that allows reliable walk-away operation and at the same time fulfils quality requirements. AMD series automated media dispensing system is developed to meet these needs.



解决现有问题 Solve existing problem

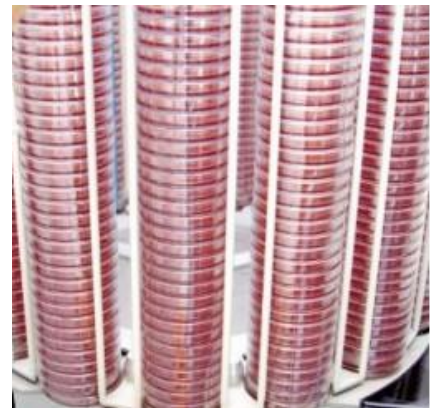
- ① 人工分装培养基 —— 分装的培养基量不均匀、工作强度大、效率低、易污染培养基
- ② 购买成品培养基 —— 成本高、保质期短（最长不能超过 6 个月）、频繁采购、运输储存条件要求高（2-25℃ 避光），尤其运输过程，需要冷链运输
- ③ 培养基分装系统 —— 全自动分装、效率高、不易污染、解决大批量储运条件限制问题

- ①Dispensing media by person —Nonuniformity dose, heavy working intensity, poor efficiency and easy contamination.
- ②Purchase prepared media —High cost, short shelf life(max. not more than 6months), frequency purchase, high storage requirement for transportation(2-25℃ protect from light), especially, required for cold-chain transportation.
- ③Media dispensing system —Automated dispensing, high efficiency, eliminating source of contamination, solve the limited condition problem of big batch storage and transporation.

AMD 系列全自动培养基分装系统操作步骤 Operation procedure

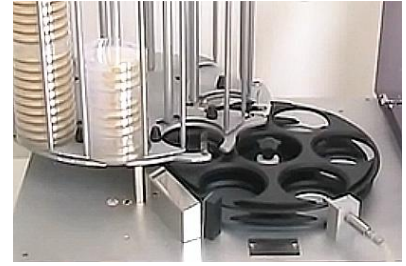


So
Easy!



AMD 系列全自动培养基分装系统技术特点 Parameter and Feature

- ◎ 系统三个部分组成：主控制系统、培养皿离合系统、培养皿库架。
 - ◎ 5.7寸触摸屏+智能操作系统，友善的操作界面，轻松操作。
 - ◎ 独特的空皿下皿托板装置，有效避免下皿过程的卡皿故障。
 - ◎ 培养皿库架和培养皿离合系统转盘采用硬质铝合金，拆装更加轻便。
 - ◎ 培养皿库架 280 皿（特殊规格可定制）。
 - ◎ 分装舱内置有紫外灭菌灯，降低培养基污染风险。
 - ◎ 分装体积 1-1000ml，分装精度小于 1%，分装 280 皿的库架所需时间不超过 30 分钟。
 - ◎ 快速校准分装量，可自行设置参数确定适合的分装程序，并存储不同的分装程序，分装时调用相应程序即可开始运行。
 - ◎ 手动分装功能，可设置分装量、分装次数、分装间隔时间。
 - ◎ 培养皿库架弧形弹簧板，让装卸培养皿更加轻松快速。
 - ◎ 具有设备故障报警及自查功能，便于快速查找故障并修复。
- ◎ Composed by three parts: Main control system, rotor system and carrousel.
 - ◎ 5.7inch touch screen and intelligent operation system, easy handling.
 - ◎ Special feed support for empty dishes, avoiding jam during down into the feed position.
 - ◎ The material of rotor and carrousel are adopts hard aluminum alloy, easy to disassemble.
 - ◎ Two types of carrousel for choice: 280 petri dishes(accept customized).
 - ◎ The dispensing area is protected by UV rays, reduce the risk of containment.
 - ◎ Dispensing volume from 1-1000ml, its precision is less than 1%. Dispensing 280 petri dishes in less than 30 minutes.
 - ◎ Fast calibrate dispensing volume, can set parameter as need for suitable dispensing program, and different dispensing programs can be stored.
 - ◎ Manual dispense function can set dispense volume, dispense times and dispense time interval.
 - ◎ Adopts curved spring plate in the carrousel which is easy for unloading dishes.
 - ◎ Having fault alarm and self-check function, fast to find fault and repair.



AMD 系列基本参数

	280 型	110 型
主机 (L×W×H) Basic device	60×61×38cm	
含培养皿库架总高 With carrousel (H)	99cm	65cm
培养皿库架高度 Carrousel (H)	56cm	23cm
最大装皿量 Max.loading petri dishes	241 个/pcs	94 个/pcs
主机重量 Basic device(Weight)	44Kg	
培养皿库架重量 Carrousel(Weight)	9Kg	6.5Kg
电压 Input voltage	220V/110V±10%, 50/60Hz	
总功率 Electricity consumption	260W	
加注量范围 Filling range	1—99ml	
手动分装量范围 Filling range of manual dispense	1-999ml	
流量设定 Flow rate setting	600ml/min、1000ml/min	
培养皿型号 Petri dish type	90mm (标准/standard) , 100mm、60mm、 可定制/accept custom-made	
分装速度 Dispense speed	500 皿/小时 (加注 20ml) /500dishes/hour (volume:20ml)	
分装精度 Dispense precision	1%	

半自动 HMD 系列 Semi-automated HMD series

HMD 系列半自动培养基分装仪可分装培养基、琼脂、及缓冲液等液体。直接代替人工倾倒分装，分装精度高，避免人工倾倒量的不均匀现象，而且降低污染风险，分装效率更高。

HMD series semi-automated media dispensing device can dispense media, agar, buffer and other liquid. Instead of pouring by hand, high precision avoiding nonuniformity dose, reduce the risk of contamination, and high efficiency.



HMD 系列半自动培养基分装仪参数和特点 Parameter and Feature

- ◎ 三种模式分装：连续分装、单次分装、多次分装。
- ◎ 大尺寸触摸屏，简单的操作导航界面，操作方便。
- ◎ 可选配分装控制枪，操控自如。
- ◎ 可用于平皿、试管及其它容器。
- ◎ 设有系统校准程序，校准操作简便，确保精准的分装量。
- ◎ 分装体积 1-1000ml, 分装精度小于 1%。

- ◎ Three modes: Continuous dispensing, single dispensing and multiple dispensing.
- ◎ Large size touch screen makes it easy to control functions.
- ◎ Option of dispensing gun, convenient for control.
- ◎ Suitable for petri dish, tube and other containers.
- ◎ Setting with system calibration program. Its operation is to confirm precise dispensing volume.
- ◎ Dispensing volume from 1-1000ml, its precision is less than 1%.

HMD 系列基本参数

主机 (L×W×H) Basic device	26cm×18cm×20cm
主机重量 Basic device(Weight)	5Kg
电压 Input voltage	220V/110V±10%, 50/60Hz
总功率 Electricity consumption	40W
流量范围 Flow rate range	0-1600ml/min
转速 Speed	0-350rpm
分装精度 Dispense precision	1%