

## L-SWITCH™

### 6-PORT/2-POSITION BIDIRECTIONAL INJECTION

#### P/N LSW001

The L-Switch™ is a bidirectional 6-port / 2 position valve for injection or switching different fluids. Its configuration make it ideal for recirculation in cell culture.



## BENEFITS



**Compact**  
Save bench space



**Ease of use**  
Operate within a minute



**Automation**  
MAT to write protocols



**No dead volume**  
Get accurate results

## FEATURES

- Sample loops : 5  $\mu$ L to 100  $\mu$ L
- Low internal volume: 660nL
- Port-to-port switching: 100ms
- Up to 7 bar (100 psi)
- Wetted material: Peek
- External flangeless fittings

# SPECIFICATIONS

Performance	
Internal volume	660 nL
Dead volume	None
Switching time	100 ms
Maximum Pressure	7 bar (100 psi)
Hardware specifications	
Dimensions	7x9x15 cm <sup>3</sup>
Weight	475 g
Fittings	Flangeless (1/16" OD)
Port communication	RJ45
Power supply	RJ45
Software compatibility	Microfluidic Automation Tool All-in-One

# TECHNOLOGY

The L-SWITCH™ is a 6-port / 2-position injection valve: Peripheral ports (numbered from 1 to 6) can alternatively be connected the right or the left neighbor. The L-SWITCH™ is actuated by a motor that drives a rotor – where the fluidic path is engraved – against a stator – hosting the fluidic ports.

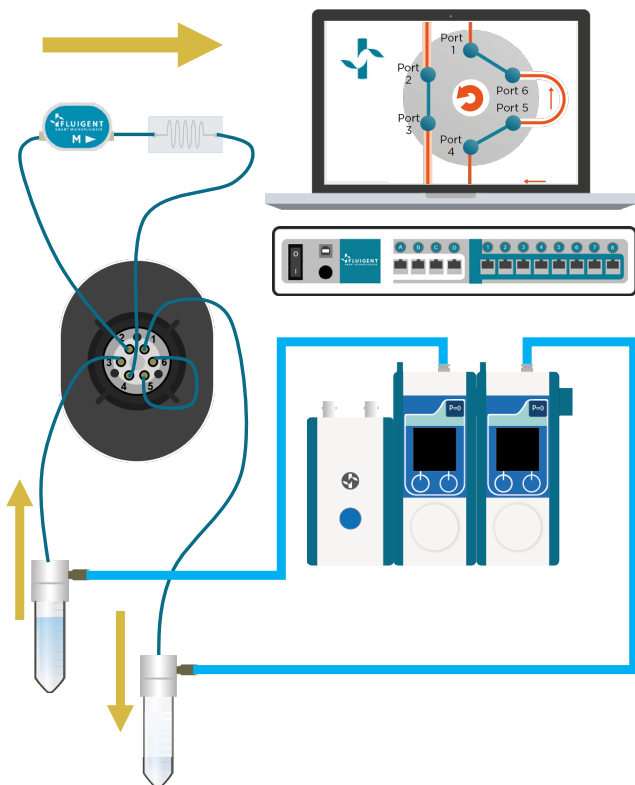


# APPLICATION

## FLUID RECIRCULATION

The L-SWITCH™ can be used as a useful cell culture tool: a small volume of buffer can be recirculated within a closed loop into the chip for several hours or days. Combined with the LineUp™ pressure regulation it can achieve a highly stable flow with a positive impact on the shear stress.

### POSITION 1



### POSITION 2

