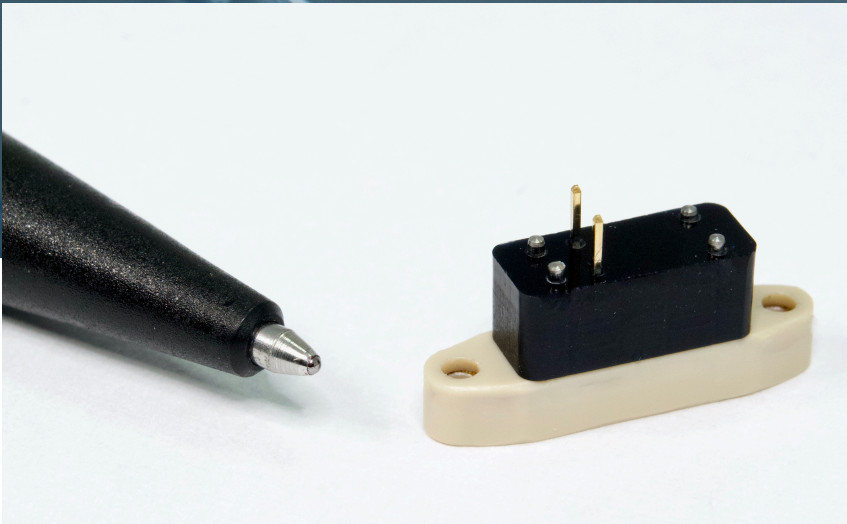


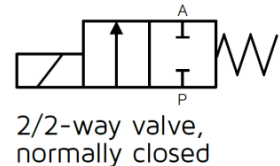
2/2-way NC valve Series 09



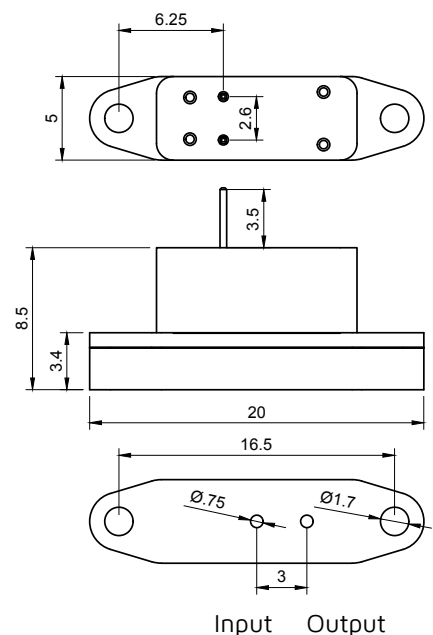
The memetis ultracompact 2/2-way media separated NC valve enables complex fluidic systems with very low power consumption and noiseless switching. The valve is a perfect fit for fluidics in life-sciences and other small but complex fluidic applications.

Specifications

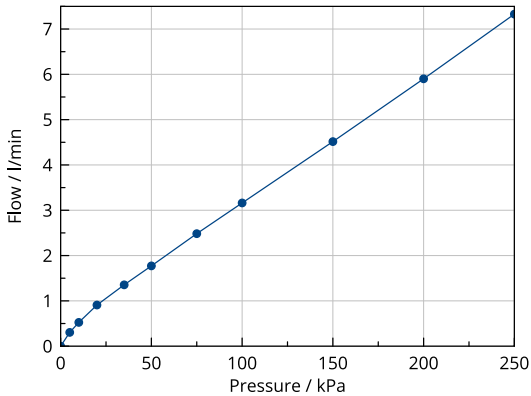
Parameter	Value
Functionality	2/2-way seat valve, normally closed, media separated , controllable
Media	Liquids, gases
Dimensions	20 x 5 x 8.5 mm ³
Internal volume	< 4 µl
Nominal width DN	0.75 mm
Max. pressure @input	2.0 bar
Max. back-pressure @output	1.2 bar
Switching time: on / off	0.1 s / 0.2 s @ 1 bar
Typical flow rates (@ Δp 1 bar)	3 000 ml/min (air) 90 ml/min (water)
K _v value	> 0.005 m ³ /h
Temperature range	10 – 50 °C **
Lifetime	> 1 000 000 cycles
Housing material	PEEK ***
Sealing material	PDMS ***
Fluidic connection	Flange / M1.6 screws
Power consumption	0.3 W
Nominal current	0.5 A
Electrical connections	Pin-contact



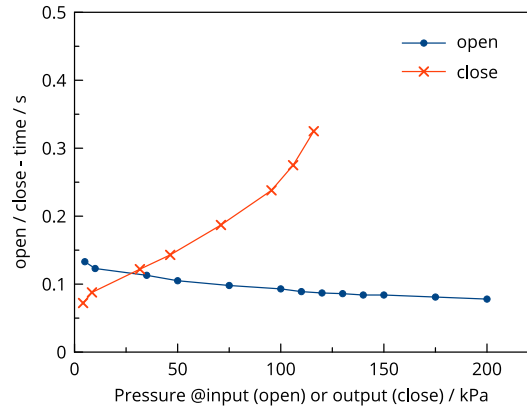
Drawings



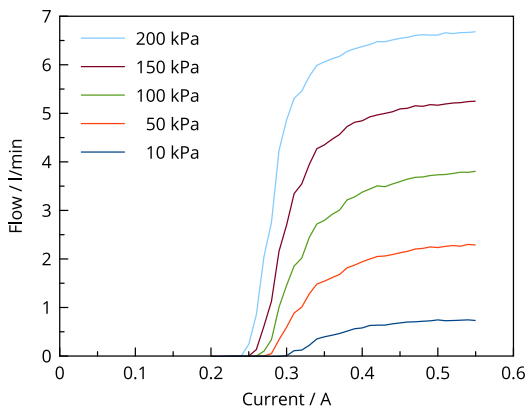
* dependent on input pressure ** contact us for lower temperatures
*** contact us for other material requirements



Graph 1: Flow rate of a typical memetis 2/2-way NC valve for pressures of 0.05 bar up to 2.5 bar (input pressure) for air at room temperature with open end.



Graph 2: Open and close-time depending on input/output pressures of the valve for a typical memetis 2/2-way NC valve.



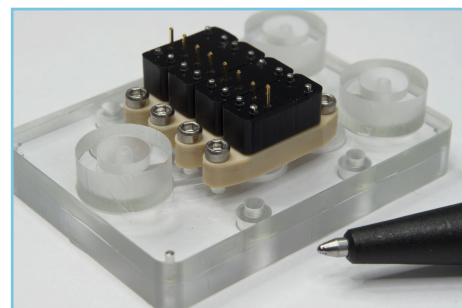
Graph 3: Flow-rate is controllable by adjusting the applied electrical current. A current of 0.5 A corresponds to a power consumption of 0.3 W.

For alternative fluidic connectors contact us directly by sending us an email to contact@memetis.com

Complementary memetis products



Electrical control unit, powered by USB-port, to control up to four memetis valves. The control includes adapter cables and has a display.



memetis offers customer-specific **smart valve manifolds** to enable easy operation of complex fluidic systems.

Contact information

memetis GmbH, Gablonzer Str. 27, 76185 Karlsruhe, Germany
Tel. +49 721 47000240, Email support@memetis.com