

## LineUP Flow EZ™

Flow controller for pressure based fluid control



### INTRODUCTION

The **Flow EZ™** is the most advanced system available for **pressure based flow control**. The compact device stands alone near the microfluidic setup, allowing the user to **minimize bench space use** without the need of a PC. Be operational and **generate data rapidly**.



**Easy to use**



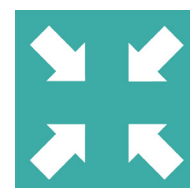
**Control with or without a PC**



**Modular & Adaptable**



**Intuitive software**  
including SDK for customized applications



**Compact**

### PRESSURE RANGES

Part number	Pressure range	Required pressure supply
LU-FEZ-0025	<b>0 to 25 mbar</b> (0 to 0,36 psi)	150 mbar (0,22 psi)
LU-FEZ-0069	<b>0 to 69 mbar</b> (0 to 1,0 psi)	
LU-FEZ-0345	<b>0 to 345 mbar</b> (0 to 5,00 psi)	1100 mbar (15,95 psi)
LU-FEZ-1000	<b>0 to 1000 mbar</b> (0 to 14,50 psi)	
LU-FEZ-2000	<b>0 to 2000 mbar</b> (0 to 29,01 psi)	2100 mbar (30,46 psi)
LU-FEZ-7000	<b>0 to 7000 mbar</b> (0 to 101,5 psi)	7100 mbar (103,0 psi)
LU-FEZ-N025	<b>0 to -25 mbar</b> (0 to -0,36 psi)	-800 mbar (-11,6 psi)
LU-FEZ-N069	<b>0 to -69 mbar</b> (0 to -1,0 psi)	
LU-FEZ-N345	<b>0 to -345 mbar</b> (0 to -5,00 psi)	
LU-FEZ-N800	<b>0 to -800 mbar</b> (0 to -11,6 psi)	



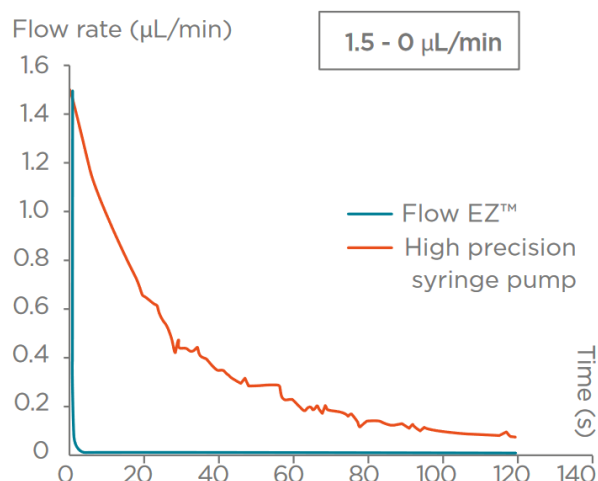
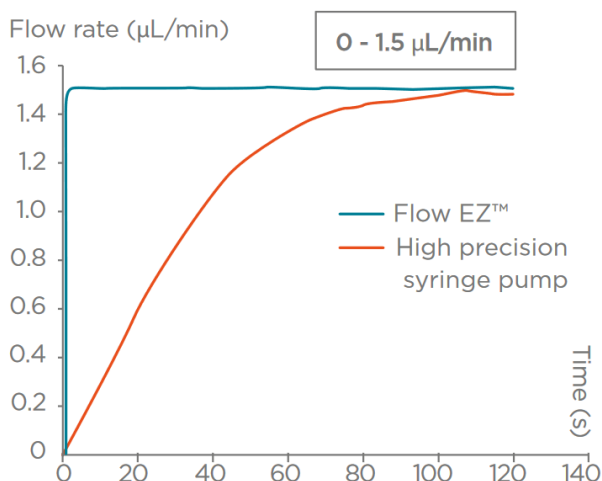
# SPECIFICATIONS

Performance	
Step	0,03% of the maximum pressure
Precision	0,1% on the measured value (effective beyond 10% of the maximum pressure)
Hardware specifications	
Dimensions L*W*H	91,9 * 71,8 * 131 mm
Weight	634 g
Electronical specifications	
Power consumption	6 W
Chemical compatibility	
Gas compatibility	Dry, oil-free gas, air (N <sub>2</sub> , O <sub>2</sub> , CO <sub>2</sub> ), any non corrosive or non explosive gas
Liquid compatibility****	Aqueous solvent, oil, organic solvent, biological sample
Software compatibility	
Fluigent software	All-in-One (A-i-O)
	Microfluidic Automation Tool (MAT)
	Software Development Kit (SDK)

\*For negative version of the Flow EZ™, Prevent any liquid from entering the device. A backflow filter or liquid trap reservoir can be used to avoid liquid flowing into pneumatic tubing.

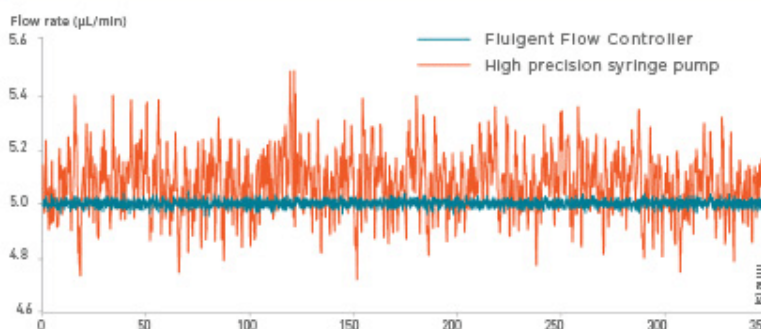
Features	FLUIGENT FlowEZ™	Other Pressure-Based Solutions	Syring Pumps
Free standing (no PC needed)	✓	✗	~
Modular and stackable	✓	✗	~
Very short response time	✓	~	✗
Pulseless flow	✓	✓	✗
Control & monitor display	✓	~	~
Very low gas consumption	✓	✗	NA
Compact	✓	~	✗

## RESPONSE TIME

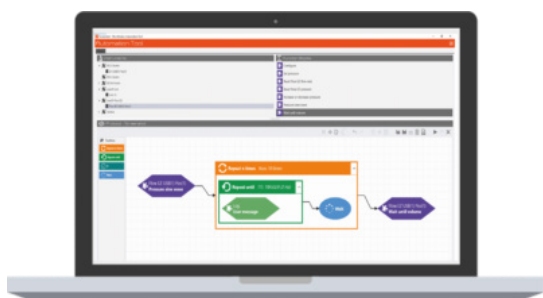


## PRESSURE STABILITY

### HIGHER STABILITY



## SOFTWARE COMPATIBILITY



The **LineUP series** modules are compatible with **Fluigent's** newest software applications:

- The Fluigent **All-in-One**: Quickly monitor, control, and record data from all Fluigent instruments. Ultra-fast datalogging, integrated dashboard.
- **Microfluidic Automation Tool**: Easily automate time based protocols for pressure/flow as well as valve control. Intuitive Drag&Drop, TTL Trigger, advanced automation logic.
- **Software Development Kit**: Integrate Flow EZ seamlessly in your existing application. Available in C++, Labview, Matlab, Python, etc.

