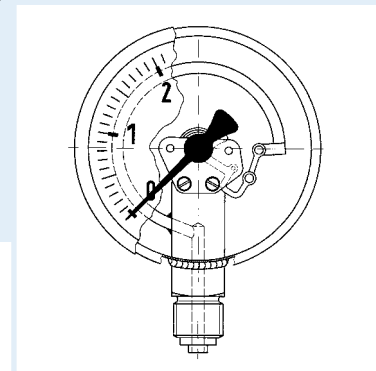


# Bourdon tube pressure gauges for chemical applications

EN 837-1



- For chemical and process engineering applications
- Measuring system fully welded to housing
- Extremely robust design
- For temperatures of the medium of up to 150 °C
- Tightness-tested with helium
- GOSSTANDART-certified
- ATEX version (optional)



**Application** For corrosive gaseous and liquid media which are not highly viscous and do not crystallise; suitable for corrosive environments.  
! For measuring gas or vapour, these gauges must be used in accordance with the table "Selection Criteria as per EN 837-2" (see appendix)!

## Technical specifications

**Type**  
D 9

**Nominal size**  
50 – 63

**Accuracy class (EN 837-1/6)**  
1.6

**Ranges (EN 837-1/5)**  
NG 50:  
-1/0 to -1/+15 bar  
0/0.6 to 0/600 bar  
NG 63:  
-1/0 to -1/+15 bar  
0/0.6 to 0/1000 bar

**Application area**  
Static load: ¼ x full scale value  
Dynamic load: ⅓ x full scale value  
Short-term: full scale value

## Operating temperature range

Medium:  $T_{max} = +150\text{ °C}$   
Ambient:  $T_{min} = -20\text{ °C}$   
 $T_{max} = +60\text{ °C}$

## Temperature performance

Indication error when the temperature of the measuring system deviates from the normal temperature of 20 °C:  
rising temperature approx.  $\pm 0.4\%$ /10 K  
falling temperature approx.  $\pm 0.4\%$ /10 K  
of full scale value

## Degree of protection

IP 65 (EN 60529)  
with housing vent ( $\leq 25$  bar): IP 54

## Standard version

### Connection

Stainless steel 316 L  
NG 50 bottom or bottom back  
NG 63 bottom or centre back  
G¼B – spanner size SW 14 (EN 837-1/7.3)

### Measuring element

Bourdon tube, stainless steel 316 Ti/316 L  
 $\leq 60$  bar "C" type tube  
 $> 60$  bar helical tube  
tightness-tested with helium

### Movement

Stainless steel

### Dial

Aluminium, white  
Dial marking black

### Pointer

Aluminium, black

### Housing

Stainless steel 304 with blow-out

### Crimped bezel

Stainless steel 304

### Window

NG 50 plastic  
NG 63 laminated safety glass

## Options

- Plastic window (NG 63)
- Back flange (NG 63)
- Clamp fixing
- ATEX version 
- Crimped bezel, polished
- Special scales
- Other process connections

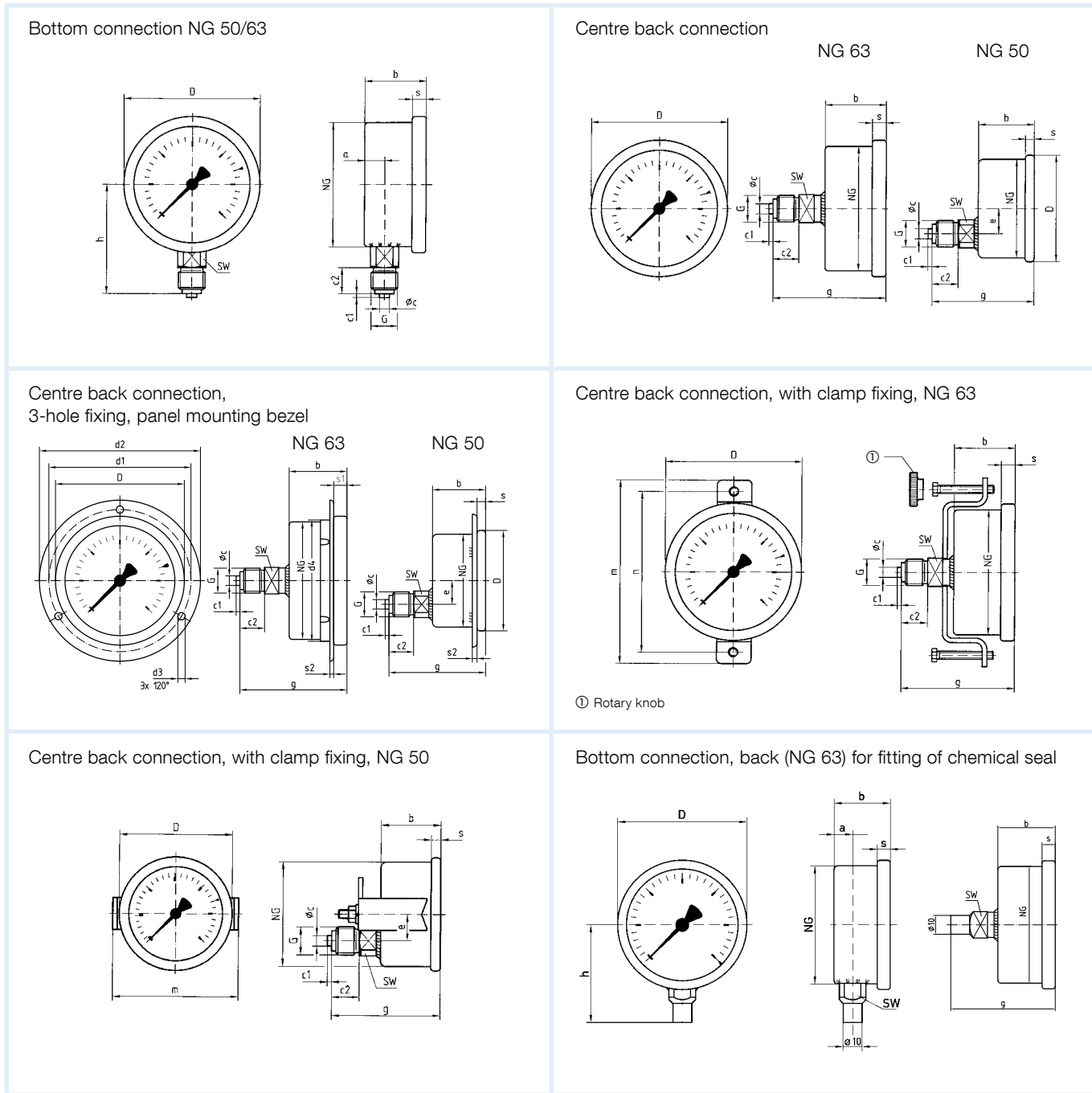


See page 57 for prices.

# Bourdon tube pressure gauges for chemical applications

Type D 9 – NG 50/63

## 1 Housing types and dimensions



### Dimensions (mm)

Nominal size (NG)	a	a1	b	b1	Øc	c1	c2	d1*	d2*	d3*	d4	D	e	G	g	h	m	n	s	s1	s
50	10.5	-	28	-	5	2	13	60	70	3.6	-	53	12.5	G1/4B	51	46	59	-	4.5	-	2.5
63	9.5	13	30.5	34	5	2	13	75	85	3.6	64	68	-	G1/4B	56	53	94	82	7	5.5	2
Nominal size (NG)	SW																				
50	14																				
63	14																				

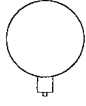
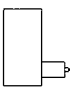
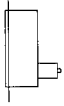
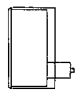
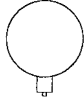
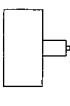
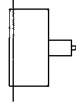
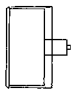
\* Dimensions as per DIN 16063.

# Bourdon tube pressure gauges for chemical applications

EN 837-1

DG: M, PG: 3

1

Type	RF50Ch, D902	RF50Ch, D912	RF50Ch, D932	RF50Ch, D952	RF63Ch, D902	RF63Ch, D912	RF63Ch, D932	RF63Ch, D952
Version								
Housing Ø	50	50	50	50	63	63	63	63
Housing	Stainless steel 304 with crimped bezel 304							
Measuring element	Bourdon tube, stainless steel 316 Ti/316 L							
Accuracy class	1.6	1.6	1.6	1.6	1.6	1.6	1.6	1.6
Connection	G¼B	G¼B	G¼B	G¼B	G¼B	G¼B	G¼B	G¼B
			3-hole fixing, panel mounting bezel, 304, bare metal surface	Clamp fixing			3-hole fixing, panel mounting bezel, 304, bare metal surface	Clamp fixing
Range (bar)	Part no.	Part no.	Part no.	Part no.	Part no.	Part no.	Part no.	Part no.
<b>Price €</b>								
-1/0	85051902	85051912	85051932	85051952	<b>85101902</b>	85101912	85101932	85101952
-1/+0.6	85052902	85052912	85052932	85052952	85102902	85102912	85102932	85102952
-1/+1.5	85053902	85053912	85053932	85053952	85103902	85103912	85103932	85103952
-1/+3	85054902	85054912	85054932	85054952	85104902	85104912	85104932	85104952
-1/+5	85055902	85055912	85055932	85055952	85105902	85105912	85105932	85105952
-1/+9	85056902	85056912	85056932	85056952	85106902	85106912	85106932	85106952
-1/+15	85057902	85057912	85057932	85057952	85107902	85107912	85107932	85107952
<b>Price €</b>								
0/0.6	85059902	85059912	85059932	85059952	85109902	85109912	85109932	85109952
0/1	85060902	85060912	85060932	85060952	<b>85110902</b>	85110912	85110932	85110952
0/1.6	85061902	85061912	85061932	85061952	<b>85111902</b>	85111912	85111932	85111952
0/2.5	85062902	85062912	85062932	85062952	<b>85112902</b>	85112912	85112932	85112952
0/4	85063902	85063912	85063932	85063952	<b>85113902</b>	85113912	85113932	85113952
0/6	85064902	85064912	85064932	85064952	<b>85114902</b>	<b>85114912</b>	<b>85114932</b>	<b>85114952</b>
0/10	85065902	85065912	85065932	85065952	<b>85115902</b>	<b>85115912</b>	<b>85115932</b>	<b>85115952</b>
0/16	85066902	85066912	85066932	85066952	<b>85116902</b>	<b>85116912</b>	<b>85116932</b>	<b>85116952</b>
0/25	85067902	85067912	85067932	85067952	<b>85117902</b>	<b>85117912</b>	<b>85117932</b>	<b>85117952</b>
0/40	85068902	85068912	85068932	85068952	<b>85118902</b>	85118912	85118932	85118952
<b>Price €</b>								
0/60	85069902	85069912	85069932	85069952	85119902	85119912	85119932	85119952
0/100	85070902	85070912	85070932	85070952	85120902	85120912	85120932	85120952
0/160	85071902	85071912	85071932	85071952	85121902	85121912	85121932	85121952
0/250	85072902	85072912	85072932	85072952	85122902	85122912	85122932	85122952
0/400	85073902	85073912	85073932	85073952	85123902	85123912	85123932	85123952
<b>Price €</b>								
0/600	85074902	85074912	85074932	85074952	85124902	85124912	85124932	85124952
0/1000	---	---	---	---	85125902	85125912	85125932	85125952

Minimum order quantity for non-stock items = 10 pieces.



See page 72 for extra charges.