

# GILL

MetPak  
Professional Weather Stations



[gillinstruments.com](http://gillinstruments.com)

The MetPak range represents the very best measurement accuracy and performance for professional weather stations. Three base models are available; MetPak, MetPak Pro and MetPak RG, with optional remote wind sensor placement. Clear, intuitive configuration and display software is included with each system.

The MetPak range has been designed to ensure each parameter produces a reference quality measurement in close proximity to each other without influencing the other measurements, unlike many competitive all-in-one vertical designs. The Gill design also facilitates easy, yet professional quality calibration of each individual parameter. The incredibly robust design ensures the products can be used in even the most demanding environments worldwide.



# Weather Stations

## Professional, Reference Quality Multi-Parameter Stations

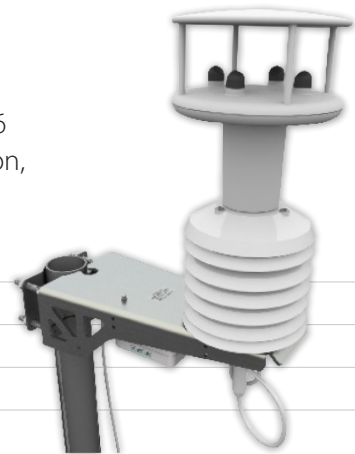
MetPak Weather Stations are available in various configurations to fit all of your measurement requirements. All MetPak Weather Stations feature wind speed & direction, temperature, relative humidity, pressure and dew point measurements. MetPak Pro adds the ability to combine up to four further sensors or systems with additional analogue, digital and PRT inputs. MetPak RG is supplied complete with tipping bucket rain gauge.

Software - MetView for visualisation and data logging and MetSet for configuration - are both included as standard.

## MetPak

MetPak Weather Station provides reference quality measurements of the basic 6 parameters in a robust design. Parameters measured are; Wind Speed & Direction, Temperature, Relative Humidity, Barometric Pressure and Dew Point.

- **Wind Speed & Direction**
- **Air Temperature**
- **Relative Humidity**
- **Barometric Pressure**
- **Dew Point**



Optional MetPak Pro junction box and rain gauge available from Gill



## MetPak *PRO*

In addition to the parameters MetPak offers, the Pro allows up to four additional parameters using analogue, digital and PRT inputs with excellent resolution. This flexibility allows users to combine sensors in a very cost effective package without the need for expensive external data acquisition systems.

- **Wind Speed & Direction**
- **Air Temperature**
- **Relative Humidity**
- **Barometric Pressure**
- **Dew Point**
- **Analogue Input 1**
- **Analogue Input 2**
- **PRT Input**
- **Digital Input**  
(for optional Rain Gauge)

## MetPak *RG*

MetPak RG includes precipitation measurements to those parameters provided by a MetPak at a very attractive price while maintaining the reference quality measurement concept. A separate reference rain gauge is included along with the base plate and 6m of cable. The rain gauge is calibrated to the MetPak ensuring excellent accuracy and data quality.

- **Wind Speed & Direction**
- **Air Temperature**
- **Relative Humidity**
- **ARG100 Rain Gauge**
- **Barometric Pressure**
- **Dew Point**



# Base Stations

Mix other sensors with MetPak to build your own Weather Station

Each MetPak model is available as a Base Station which enables the system to be specified with a remote wind sensor if required. This sensor can be positioned away from the Base Station and a connection cable is provided.

The Base Station has been tested in accordance with BSEN 60945 and is suitable for use in marine environments. This system can also be specified without a wind sensor if wind measurement data is not required.

## Step 1: Base Station

Choose from the MetPak, MetPak Pro or MetPak RG 'remote' base stations. The MetPak base station provides 4 parameters and should be chosen if no other parameters besides wind speed and direction need to be added in future. The MetPak Pro base station allows a remote wind sensor as well as 4 additional sensors to be added. The MetPak RG provides the same parameters as the MetPak but with the addition of the rain gauge and a wind sensor at a unique and attractive pricing level.

### MetPak



### MetPak *PRO*



### MetPak *RG*



## Step 2: Wind measurement options

Choose a wind measurement option from the list below \*.



### WindSonic family

For wind speed and direction measurements to 75 m/s. Corrosion free, polycarbonate housing.



### WindSonic *M* family

Wind speed and direction measurements to 60 m/s with heating and impact resistant to UL2218 Class 1 & BSEN 60945.



### WindObserver family

With enhanced heating and wind measurements up to 90 m/s for extreme conditions.



### WindMaster

Three dimensional wind measurements up to 50 m/s in a lightweight carbon fibre/aluminium construction.



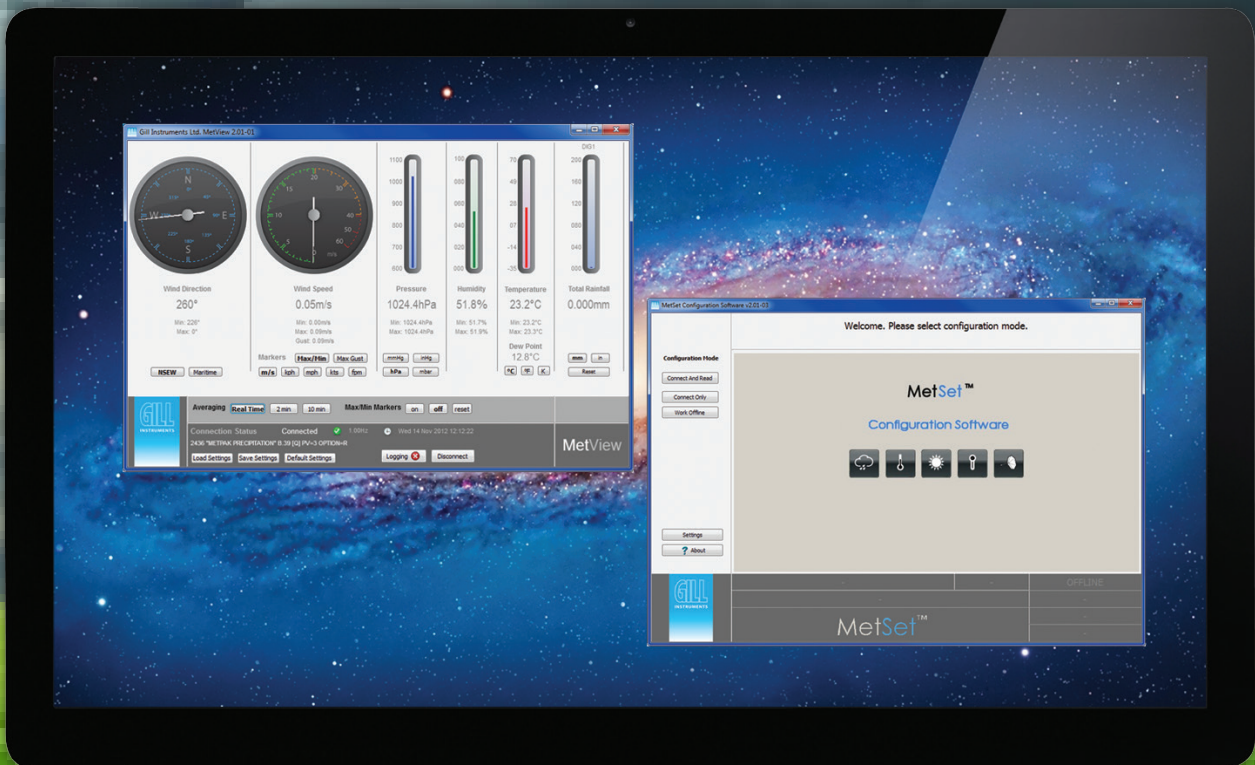
### WindMaster *PRO*

Three dimensional wind measurement up to 65 m/s in a stainless steel housing.

\*All MetPak Base Stations can be supplied without a Wind Sensor if required.

The MetPak range of professional, compact, solid-state weather stations offer a wide range of weather monitoring capabilities. Three models are available: MetPak, MetPak Pro and MetPak RG.

Each weather station has been designed for use in extreme environments, with a rugged mounting kit for simple installation. Clear, intuitive configuration and display software is also provided.



## MetView™

MetPak weather stations are provided with Gill's own MetView monitoring software. This software will enable the user to view and log data through an easy to understand interface.

## MetSet™

MetPak weather stations are also provided with MetSet configuration software. This software will enable the user to set up the weather station and configure the settings.

**Gill Instruments Limited**

Saltmarsh Park  
67 Gosport Street  
Lymington  
Hampshire  
SO41 9EG UK  
Tel: +44 (0)1590 613 500  
Email: [anem@gillinstruments.com](mailto:anem@gillinstruments.com)

---



**[gillinstruments.com](http://gillinstruments.com)**

© Gill Instruments Limited.  
Gill® is a registered trademark of the Gill Group of Companies.