

# CERTOCLAV



**Made for  
a lifetime**

# COMPACT LABORATORY AUTOCLAVES



Manuals, technical information and training videos:  
[www.certoclav.com](http://www.certoclav.com)

# Contents

## General

Foreword _____	4
Highlights _____	5
Application overview _____	6

## Vertical laboratory autoclaves made of aluminum

CertoClav EL _____	8
CertoClav MultiControl _____	9

## Vertical laboratory autoclaves made of stainless steel

CertoClav Classic _____	11
CertoClav MultiControl 2 _____	12
CertoClav Connect _____	13

## Horizontal laboratory autoclaves

CertoClav Vacuum Pro 12 & 22 _____	15
icanCLAVE STE-45-T und CertoAssist - SET _____	16

## Services, support & accessories

Services & support _____	17
Accessories _____	18
Wear parts _____	22

# CertoClav: Quality since 1957

CertoClav has been developing and producing innovative and intelligent steam sterilizers for over 60 years. Because of their compact size, our autoclaves are especially interesting for small labs or as an optimal addition to a large autoclave.

Thanks to our sophisticated technology and the tried and tested, high quality components our autoclaves are low-maintenance and often in use for over 20 years. We offer a quick and inexpensive repair and maintenance service as a matter of course. Replacement devices are available anytime if needed.

All our products are CE certified and follow the subsequent directives and standards:

- 2014/35/EU Low Voltage Directive
- 2014/30/EU EMV Directive
- 2011/65/EU Directive on the restriction of the use of certain hazardous substances in electrical and electronic equipment

Here at CertoClav, our customers are our first priority. We want to offer you the best possible service and make sure you are 100% satisfied with your order and our products. CertoClav autoclaves have clear benefits for everyday laboratory practice. Their excellent performance stems not only from pioneering technology "Made in Austria", but also from our reliable services.

You can find all CertoClav laboratory autoclaves and accessories in our new product catalogue 2021, compact at a glance. This catalogue reflects the know-how and wealth of experience, we gathered in collaboration with you in all sectors, all around the world. We, at CertoClav, are proud to be able to offer you cost-efficient end-to-end solutions among autoclaves, which let you quickly, safely and conveniently perform dependable sterilizations of liquids and solids of all kinds. If you want to learn more about CertoClav, our products, latest innovations and our retailers visit our website: [www.certoclav.com](http://www.certoclav.com).

If you need further assistance please let us know and directly contact us via e-mail at [support@certoclav.com](mailto:support@certoclav.com) or via phone at +43 732 674 278.



# CertoClav laboratory autoclaves

CertoClav autoclaves are efficient and economical to operate. Even small quantities can be autoclaved. Their simple operation allows effortless work in just a few easy steps. They are reliable, durable, nearly maintenance-free and transportable.

In addition to their robust construction, CertoClav autoclaves are distinguished by their functional and appealing design. Many of our models can be programmed according to user requirements and are therefore extremely versatile. This makes CertoClav autoclaves suitable for a wide range of applications in the everyday laboratory work, as well as in research and education.

With CertoTrace we offer a secure, simple and professional way to document the entire sterilization process. The software records which products have been sterilized by whom and when. Therefore, the traceability of sterilized products and the management of expiration dates are already integrated in the work process.

Our CertoCloud is a management software for PCs, smartphones and tablets. With it, you are able to control and manage your autoclave wherever you are. CertoCloud is also available as a lab-internal private cloud, which does not require an internet connection.



## Autoclaves

### Vertical laboratory autoclaves made of aluminum

- CertoClav EL
- CertoClav MultiControl

### Vertical laboratory autoclaves made of stainless steel

- CertoClav Classic
- CertoClav MultiControl 2
- CertoClav Connect

### Horizontal laboratory autoclaves

- CertoClav VacPro 12
- CertoClav VacPro 22
- icanCLAVE STE-45-T & CertoAssist - SET

## Highlights

- 12-45-liter chamber volume
- particularly robust construction
- cost-effective, space-saving solution
- fast heat-up time due to high performance
- for exacting sterilization
- autoclaves with vacuum
- sterilization of liquids, solids, waste, etc.
- customizable programming
- media sensor for liquids
- integrated documentation solution
- GMP/GLP, IQ/OQ/PPQ

Not every highlight is included in every model

12-45 liter  
chamber volume

# Function and application overview

CertoClav Autoklav	EL	MultiControl	Classic	MultiControl 2	Connect	VacPro 12 + 22	icanCLAVE STE-45-T
<b>Feature</b>							
documentation		+		+	+	+	+
programmability		+		+	+	+	+
touchscreen					+	+	+
CertoCloud					+	+	+
<b>Sterilization of</b>							
unpackaged solids without hollow bodies	+	+	+	+	+	+	+
liquids	+	+	+	+	+	+	+
bottles	+	+	+	+	+	+	+
instruments	+	+	+	+	+	+	+
synthetic materials	+	+	+	+	+	+	+
rubber (105 °C)		+		+	+	+	+
textiles						+	+
packaged instruments						+	+
porous materials						+	+
hollow bodies type A and type B (pipettes, empty glassware, vials and tubes) according to EN 13060						+	+
<b>Processing / preparation of</b>							
culture media	+	+	+	+	+	+	+
food preservation	+	+	+	+	+	+	+
<b>Waste treatment</b>							
sterilization of waste	+	+	+	+	+	+	+
sterilization of waste in disposal bags						+	+
sterilization of biological hazardous substances (S2)		+		+			
<b>Material tests</b>							
Long-term cycles		+		+	+	+	+
Class B program cycles						+	+

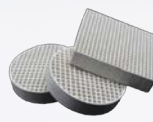
## Sterilizable goods



Instruments

Unpackaged instruments  
single & double  
packaged instrumentsLiquids  
in open bottlesLiquids with  
Media sensorFood  
in open jarsSynthetics &  
rubber

Textiles

Porous materials  
& sandInstruments  
with cavities

Filters &amp; waste

# Vertical laboratory autoclaves made of aluminum

## Benefits at a glance



The classics among our laboratory autoclaves have been on the market for over 60 years and impress with their robust construction. Furthermore, our autoclaves are extremely low maintenance. They are vented by flow procedures or fractional venting.



The sterilization chamber is made of high-quality 3103 aluminum. A heater is pressed into the bottom of the chamber, but the heating elements do not get into contact with the water directly and therefore cannot calcify. This extends the service life of the autoclaves.



Our laboratory autoclaves are ready for operation in just a few simple steps. The sterilization chamber can be opened and closed safely and easily with one simple step, simply turn the lid and remove it. They are both easily transportable and location independent. All you need is a power supply. The water is supplied by a mixture of tap water and demineralized water.



Our autoclaves are safeguarded by a multi-level safety system. It consists of an overpressure valve, a pressure valve, a safety lock inside the lid to prevent opening under pressure and the overpressure safety cavity.

# CertoClav EL

## The economical end-to-end solution

For more than 60 years, the CertoClav EL has been our tried and tested economic autoclave end-to-end solution with valve control. A precision thermometer, a control valve, and a precision manometer with drag indicator provide precise processes and accurate results for all applications.

This model is available in two versions, each with two temperature levels. You can choose between 125/140 °C and 115/121 °C. These temperature settings are controlled via the control valve on the lid. These valves are not interchangeable, because the thermostat of the device is harmonized with and calibrated to the respective valve!

Ideal for sterilization of unpackaged solids without hollow bodies, liquids, bottles, instruments, synthetic materials, food preservation, culture media preparation and waste.



## Key features

- The original!
- robust construction
- 2 temperature levels (125/140 °C & 115/121 °C)
- simple operation
- high heating capacity
- venting by flow procedure
- precision thermometer
- precision manometer with drag pointer
- heating plate integrated into base
- thermostat controlled

### Scope of delivery:

CertoClav EL including instrument tray and power cable

Also available as a SET with a wire basket, made of stainless steel, for convenient handling of autoclaving goods.

## Specifications

	CertoClav EL 125/140 °C		CertoClav EL 115/121 °C	
Article number	8501312	8501318	8501312A	8501318A
Chamber volume	12 l	18 l	12 l	18 l
Chamber diameter	24 cm	24 cm	24 cm	24 cm
Chamber depth	26 cm	39 cm	26 cm	39 cm
Chamber material	3103-aluminum	3103-aluminum	3103-aluminum	3103-aluminum
Max. operating pressure	2.7 bar	2.7 bar	2.7 bar	2.7 bar
Mains connection	230 V, 50/60 Hz	230 V, 50/60 Hz	230 V, 50/60 Hz	230 V, 50/60 Hz
Heating capacity	1900 W	1900 W	1900 W	1900 W
Max. sterilization temperature	125 °C or 140 °C	125 °C or 140 °C	115 °C or 121 °C	115 °C or 121 °C
Net weight	6.2 kg	7.6 kg	6.2 kg	7.6 kg
Product dimensions (W*D*H)	39.5*27.5*50.5 cm	39.5*27.5*66.5 cm	39.5*27.5*50.5 cm	39.5*27.5*66.5 cm

## Accessories

Article	Article number
Wire basket with handle	8583010
Service Set 1	1250499
Condensation vessel	8582020
Exhaust hose	8582016
Water distiller	8500482



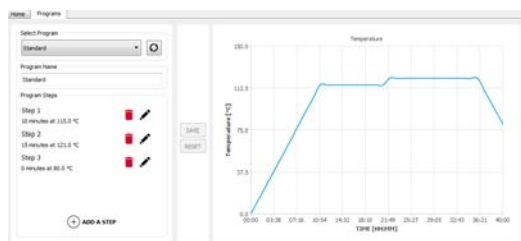
# CertoClav MultiControl

## The programmable all-rounder

The CertoClav MultiControl is a PT100 sensor-controlled laboratory autoclave. It is operated via a control unit. Via this control unit, the autoclave programming can be customized to fit your requirements. The possible settings range from 1 minute to 30 days and from room temperature to 140 °C. This simplifies and accelerates the work processes in the laboratory and, at the same time, offers a versatile range of applications. It is equipped with a USB and a printer port (RS232) for the transfer or printout of sterilization protocols. The automated process control saves valuable employee time and the automated error detection validates the sterilization result.

A software recording the process data via USB is included as a basic version. Without connecting a PC, the control unit can only be used to set programs that include just one time and temperature step. For programs that include several time and temperature steps, the PC software professional version is required.

Ideal for extended/ long- term cycles and material tests like GSB AL 631, HAST Test, Pressure Vessel Test und ICP - TM 650. As well for food preservation, culture media preparation, sterilization of waste, sterilization of biological hazardous substances (S2), unpackaged solids without hollow bodies, liquids, bottles, instruments, synthetic materials and rubber.



PC software professional version



## Key features

- microprocessor-controlled
- automatic venting
- electronic process control
- PT100 temperature sensor
- time and temperature can be selected individually
- controller with LCD display
- venting by fractional flow procedure
- RS232 & USB port
- heating integrated in the base

### Scope of delivery:

Product set of CertoClav MultiControl and MC2 control unit, including instrument tray, power cable and PC software basic version

Also available as a SET with a wire basket, made of stainless steel, for convenient handling of autoclaving goods.

## Specifications

	CertoClav MultiControl
Article number	8502312A
Chamber volume	12 l
Chamber diameter	24 cm
Chamber depth	26 cm
Chamber material	3103-aluminum
Max. operating pressure	2.7 bar
Mains connection	230 V, 50/60 Hz
Heating capacity	1900 W
Max. sterilization temperature	20 °C to 140 °C, adjustable
Net weight	6.6 kg
Product dimensions (W*D*H)	39.5*27.5*48 cm

## Accessories

Article	Article number
Wire basket with handle	8583010
Service Set 1	1250499
Exhaust filter	8582010
Filter cartridge	8582011
Condensation vessel	8582020
Exhaust hose	8582016
PC software professional version	8500210
Log printer	1300187
Water distiller	8500482

factory calibration possible.

# Vertical laboratory autoclaves made of stainless steel

## Benefits at a glance



The new, improved generation of our laboratory autoclaves comes in a new design, with more functions and a completely new touchscreen control. The steam sterilizers impress with their solid construction and they are extremely low maintenance. They are vented by flow procedures or fractional venting.



The sterilization chamber is made of corrosion-resistant, electropolished stainless steel (316L), which makes it extremely robust. A heater is bolted to the bottom of the chamber, but the heating elements do not get into contact with the water directly and therefore cannot calcify. This extends the service life of the autoclaves.



Our laboratory autoclaves are ready for operation in just a few simple steps. The sterilization chamber can be opened and closed safely and easily with one simple step, simply turn the lid and remove it. They are both easily transportable and location independent. All you need is a power supply. The water is supplied by a mixture of tap water and demineralized water.



Our autoclaves are safeguarded by a multi-level safety system. It consists of an overpressure valve, a pressure valve, a safety lock inside the lid to prevent opening under pressure and a two-bimetal safeguard to prevent overheating of the device.

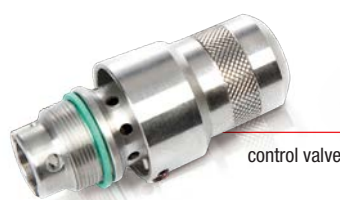
# CertoClav Classic

## The indestructible with timer

The robust CertoClav Classic is the result of the further development of the EL made of stainless steel and is extremely low maintenance. A precision thermometer, a control valve, and a precision manometer with drag indicator provide precise processes and accurate results for all applications.

This model is available in two versions, each with two temperature levels. You can choose between 125/140 °C and 115/121 °C. These temperature settings are controlled via the control valve on the lid. These valves are not interchangeable, because the thermostat of the device is harmonized with and calibrated to the respective valve!

A timer is integrated to regulate the duration of the sterilization process. If the timer is activated, the device switches off automatically after the sterilization time has passed. If the timer has not been activated, the autoclave must be switched off manually.



control valve



## Key features

- robust construction
- 2 temperature levels (125/140 °C & 115/121 °C)
- simple operation
- integrated timer function
- venting by flow procedure
- precision thermometer
- precision manometer with drag pointer
- heating plate integrated into base
- thermostat controlled

Ideal for sterilization of unpackaged solids without hollow bodies, liquids, bottles, instruments, synthetic materials, food preservation, culture media preparation and waste.

### Scope of delivery:

CertoClav Classic including instrument tray and power cable

## Specifications

	CertoClav Classic 125/140 °C	CertoClav Classic 115/121 °C
Article number	8510174	8510184
Chamber volume	18 l	18 l
Chamber diameter	26 cm	26 cm
Chamber depth	35 cm	35 cm
Chamber material	stainless steel 316L	stainless steel 316L
Max. operating pressure	2.7 bar	2.7 bar
Mains connection	230 V, 50/60 Hz	230 V, 50/60 Hz
Heating capacity	1300 W	1300 W
Max. sterilization temperature	125 °C or 140 °C	115 °C or 121 °C
Net weight	8.8 kg	8.8 kg
Product dimensions (W*D*H)	44.5*30*60.5 cm	44.5*30*60.5 cm

## Accessories

Article	Article number
Wire basket with handle	1300149
Service Set 2	1310186
Condensation vessel	8582020
Exhaust hose	8582016
Water distiller	8500482

# CertoClav MultiControl 2

## The programmable generalist

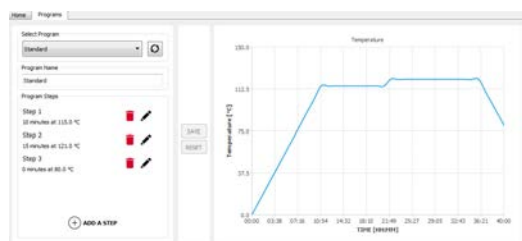
The CertoClav MultiControl 2 is a PT100 sensor-controlled laboratory autoclave. It is operated via a control unit. Via this control unit, the autoclave programming can be customized to fit your requirements. The possible settings range from 1 minute to 30 days and from room temperature to 140 °C. This simplifies and accelerates the work processes in the laboratory and, at the same time, offers a versatile range of applications. It is equipped with a USB and a printer port (RS232) for the transfer or printout of sterilization protocols. The automated process control saves valuable employee time and the automated error detection validates the sterilization result.

## Key features

- microprocessor-controlled
- automatic venting
- electronic process control
- PT100 temperature sensor
- time and temperature can be selected individually
- controller with LCD display
- venting by fractional flow procedure
- RS232 & USB port
- heating integrated in the base

### Scope of delivery:

Product set of CertoClav MultiControl 2 and MC2 control unit, including instrument tray, power cable and PC software basic version



PC software professional version

## Specifications

	CertoClav MultiControl 2
Article number	8510175
Chamber volume	18 l
Chamber diameter	26 cm
Chamber depth	35 cm
Chamber material	stainless steel 316L
Max. operating pressure	2.7 bar
Mains connection	230 V, 50/60 Hz
Heating capacity	1300 W
Max. sterilization temperature	20 °C to 140 °C, adjustable
Net weight	9.5 kg
Product dimensions (W*D*H)	44.5*30*53.5 cm

A software recording the process data via USB is included as a basic version. Without connecting a PC, the control unit can only be used to set programs that include just one time and temperature step. For programs that include several time and temperature steps, the PC software professional version is required.

Ideal for extended/ long- term cycles and material tests like GSB AL 631, HAST Test, Pressure Vessel Test und ICP - TM 650. As well for food preservation, culture media preparation, sterilization of waste, sterilization of biological hazardous substances (S2), unpackaged solids without hollow bodies, liquids, bottles, instruments, synthetic materials and rubber.



## Accessories

Article	Article number
Wire basket with handle	1300149
Service Set 2	1310186
Exhaust filter	8582010
Filter cartridge	8582011
Condensation vessel	8582020
Exhaust hose	8582016
PC software professional version	8500210
Log printer	1300187
Water distiller	8500482

factory calibration possible.



# CertoClav Connect

## The fully automatic with cloud documentation

CertoClav Connect is a fully automated laboratory autoclave that requires no prior training. It is operated by means of a 7"- high resolution touch screen, the CertoTouch. All operating steps are explained with training videos directly on the CertoTouch. All operating steps are explained directly on the CertoTouch with videos. Individual sterilization programs, which include several time and temperature steps can also be created directly on the CertoTouch. Once the autoclave is connected to the Internet via WLAN, it is automatically connected to the CertoCloud.

With this automatic documentation the autoclave meets all GLP requirements. The basic license of CertoCloud is already included.

Ideal for extended/ long- term cycles and material tests like GSB AL 631, HAST Test, Pressure Vessel Test und ICP - TM 650. As well for food preservation, culture media preparation, sterilization of waste, unpackaged solids without hollow bodies, liquids, bottles, instruments, synthetic materials and rubber.

## Key features

- fully automated
- automatic venting
- electric exhaust valve
- optional flexible media sensor
- time and temperature can be selected individually
- controller with LCD display
- venting by fractional flow procedure
- Ethernet, LAN, Wi-Fi
- 7" touch screen with video assistant
- cloud connection
- heating integrated in the base
- electronic safety interlock

### Scope of delivery:

Product set of CertoClav Connect & CertoTouch screen, including instrument tray, power cable and CertoCloud basic license



**PT100 temperature sensor –**  
For autoclaving liquids  
optionally available.



## Specifications

	CertoClav Connect
Article number	8510176
Chamber volume	18 l
Chamber diameter	26 cm
Chamber depth	35 cm
Chamber material	stainless steel 316L
Max. operating pressure	2.7 bar
Mains connection	230 V, 50/60 Hz
Heating capacity	1300 W
Max. sterilization temperature	20 °C to 140 °C, adjustable
Net weight	16 kg
Product dimensions (W*D*H)	44*38*54 cm

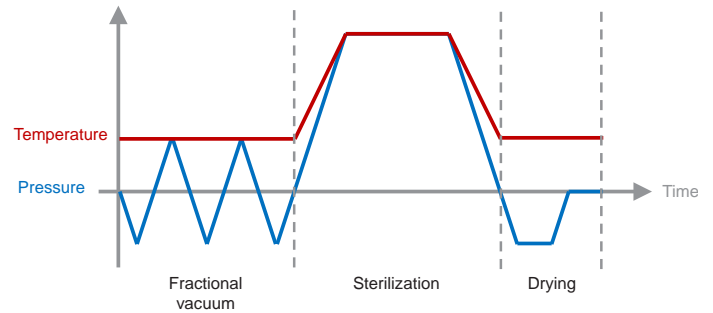
## Accessories

Article	Article number
Wire basket with handle	1300149
Service Set 2	1310186
Media sensor	1300185
CertoServer	8500508
CertoCloud premium license	8500212
Water distiller	8500482

factory calibration possible.

# Horizontal laboratory autoclaves

## Benefits at a glance



Our horizontal autoclaves are front-loading, bench-top autoclaves available in 3 sizes with chamber capacities ranging from 12 to 45 l. Compact on the outside but with ideal chamber capacities inside. Each size has an optimal loading capacity for most DURAN® (Schott) laboratory bottles.

Our horizontal laboratory autoclaves are class B steam sterilizers, the air is removed from the sterilization chamber repeatedly with a fractionated pre-vacuum. Due to this the steam can sterilize through packages and in hollow parts.



The sterilization chamber is made of corrosion-resistant stainless steel (304L), electropolished and easy to clean. A separate steam generator is incorporated in the housing. This has numerous advantages:

- no heating elements and no reservoir for dirty water in the chamber
- in conjunction with the stand-by pre-heating function, only 10 min heating time to 121 °C with an empty chamber is required
- improved air removal by suppressing the air to the bottom
- quicker cooling as neither the hot water in the chamber nor the separate steam generator need to be cooled
- after cooling, steam is immediately available for the next sterilization run



Only a power supply is required for these stand-alone devices. They have integrated water tanks for fresh and wastewater, with a tank volume of 2 - 5 liters, depending on the model. The tanks are easy to clean and disinfect.



# CertoClav Vacuum Pro 12 & 22

## The All-In-One Autoclaves

Thanks to preheatable chamber, cooling-ventilation and vacuum pump the laboratory autoclaves of the CertoClav Vacuum Professional series guarantee short cycle times from 20 minutes including drying time. Due to the intelligent combination of vacuum, pressure and steam, the CertoClav Vacuum Pro 12 and CertoClav Vacuum Pro 22 are suitable for solids of all materials as well as hollow bodies. The additional media sensor guarantees a complete sterilization of liquids such as culture media.

The 7-inch, robust and high-resolution touchscreen, the CertoTouch offers an intuitive operation, including a free of charge license of our CertoCloud software for fully automatic logging, remote maintenance and with alert system via PC, tablet or smartphone. The autoclave can notify the user by e-mail or SMS.

With its predefined standard programs, repeat function, automatic documentation and short sterilization cycles, the laboratory autoclaves CertoClav Vacuum Pro 12 und CertoClav Vacuum Pro 22 make everyday laboratory work much easier.

Ideal for material tests like GSB AL 631, HAST Test, Pressure Vessel Test und ICP - TM 650, quality control and for class B program cycles. As well for food preservation, culture media preparation, sterilization of waste, sterilization of waste in disposal bags, unpackaged solids without hollow bodies, liquids, bottles, instruments, synthetic materials, rubber, textiles, packaged instruments, porous materials and hollow bodies type A and type B (pipettes, empty glassware, vials and tubes) according to EN 13060.

### Key features

- 12 preinstalled programs, 1 of which is user-definable
- vacuum pump Made in Germany
- flexible media sensor PT1000
- water quality sensor
- 7" touchscreen with video assistant
- automatic documentation
- RS232, RS485, USB, SD card
- ethernet, LAN, WiFi
- cloud connection
- GMP/GLP compliant

### Scope of delivery:

Product set CertoClav VacuumPro & CertoTouch screen, including instrument tray, power cable and CertoCloud basic license



### Specifications

	CertoClav VacPro 12	CertoClav VacPro 22
Article number	8500487	8500489
Chamber volume	12 l	22 l
Fresh water tank volume	2.3 l	4.5 l
Waste water tank volume	2.1 l	4 l
Chamber diameter	20 cm	25 cm
Chamber depth	36 cm	45 cm
Chamber material	stainless steel 304L	stainless steel 304L
Max. operating pressure	230 kPa	230 kPa
Mains connection	220 V, 50/60 Hz	220 V, 50/60 Hz
Heating capacity	2400 W	2400 W
Max. sterilization temperature	105 °C to 134 °C	105 °C to 134 °C
Net weight	51 kg	55 kg
Product dimensions (W*D*H)	50*61*43 cm	50*65*43 cm

factory calibration possible.

### Accessories recommendation

Article	Article number
CertoServer	8500508
CertoCloud premium license	8500212
Water distiller	8500482
Tray Set with 3 trays	8500481
Wire basket	8500403
Drip tray	1300767
Service Set 3	8500495
Bacteria filter	1300705
Log printer	1300187
Label printer	8500502
Direct thermal labels	8500507
Barcode scanner	8500503
Template for IQ/OQ documentation	8500513
IQ/OQ qualification	8500515



# icanCLAVE STE-45-T & CertoAssist - SET

## The extra large All-In-One autoclave

Due to its predefined standard programs, repeat function, automatic documentation and short sterilization cycles, the icanCLAVE autoclave model STE-45-T makes everyday laboratory work much easier. The preheatable chamber, the air-cooling system and the vacuum pump, guarantee a fast sterilization cycle including drying of about 20 minutes.

The intelligent combination of vacuum, pressure and steam makes the icanCLAVE STE-45-T suitable for solids of all materials as well as hollow bodies. An additional media sensor (PT1000) guarantees the complete sterilization of liquids, such as culture media.

In addition, the icanCLAVE STE-45-T is equipped with the CertoAssist, an extra-large, robust and high-resolution touchscreen. All operating steps are explained directly on the screen with videos. Individual sterilization programs can also be created directly on screen. As soon as the autoclave is connected to the Internet via WLAN, it is also automatically connected to the CertoCloud.

Ideal for sterilization of culture media in bottles and for class B program cycles. As well for food preservation, culture media preparation, sterilization of waste, sterilization of waste in disposal bags, unpackaged solids without hollow bodies, liquids, bottles, instruments, synthetic materials, rubber, textiles, packaged instruments, porous materials and hollow bodies type A and type B (pipettes, empty glassware, vials and tubes) according to EN 13060.

## Key features

- 8 preinstalled programs
- vacuum pump Made in Germany
- flexible media sensor PT1000
- water quality sensor
- CertoAssist touchscreen
- automatic documentation
- RS232, RS485, USB, SD card
- ethernet, LAN, WiFi
- cloud connection
- GMP/GLP compliant

### Scope of delivery:

Product set of icanCLAVE autoclave model STE-45-T & CertoAssist touchscreen, including instrument tray, power cable and CertoCloud basic license



## Specifications

	icanCLAVE Autoklav Modell STE-45-T
Article number	8500610
Chamber volume	45 l
Fresh water tank volume	5 l
Waste water tank volume	3 l
Chamber diameter	31.9 cm
Chamber depth	61.7 cm
Chamber material	stainless steel 304L
Max. operating pressure	230 kPa
Mains connection	220 V, 50/60 Hz
Heating capacity	2400 W
Max. sterilization temperature	105 °C to 134 °C
Net weight	120 kg
Product dimensions (W*D*H)	64*84*56 cm

## Accessories

Article	Article number
CertoServer	8500508
CertoCloud premium license	8500212
Water distiller	8500482
Tray Set with 3 trays	8500404
Wire basket	8500406
Drip tray	1300768
Service Set 5	8500407
Bacteria filter	1300858
Log printer	1300187
Label printer	8500502
Direct thermal labels	8500507
Barcode scanner	8500503

factory calibration possible.



# High quality services

CertoClav is not only famous for its autoclaves but also for the quality of the services and supplementary activities. Our services range from giving advice, providing sterilization processes, finding the most suitable autoclave up to installing and commissioning it, and through to after-sales. We can carry out a complete qualification and validation for CertoClav devices on request.

## Check and Service Package

For all vertical CertoClav models

Article number 1250000

CertoClav autoclaves are exemplary for a long-lasting and productive use. We recommend regular maintenance intervals to ensure constant availability of the device over its entire lifecycle. With our testing and maintenance package, this can be achieved very easily and cost-efficiently. During maintenance, all mechanical, electrical and electronic components are subjected to a visual and a functional check and are replaced if necessary. The testing and maintenance package includes an initial check, a non-binding cost estimate, an electrical safety test, a pressure test, a function test with temperature check and an inspection of the safety equipment.

## Factory-made validation of the sterilization cycle

For all vertical CertoClav models

Article number 1250001

Temperature control with a certified EBRO data logger including a detailed temperature protocol.

## Modification CV EL

CertoClav EL

Article number 8581000

Upgrade of your CertoClav EL to a MultiControl with the MC2 control unit. The base is converted to a MultiControl with a PT100 temperature sensor, the lid is converted to a MultiControl lid with pressure control valve and MultiControl steam release spigot.

## Repair service

Article number 1300000

In the event of a problem, you can completely rely on our repair service. Our employees are always ready to help competently and quickly. Only original CertoClav spare parts are used for repairs. Repairs are carried out exclusively by our qualified technicians.

## IQ/OQ Qualifikation

CertoClav VacPro 12 & 22

Article number 8500515

Factory-made validation including documentation.



# Wide range of accessories

For optimal workflow

## Wire basket with handle

The wire basket for convenient handling of autoclaving goods like solids, waste in bags, instruments, bottles, liquids or similar.

Accessory for	Material	Diameter	Height	Article number
Aluminum models	stainless steel	ø 23 cm	17 cm	8583010
Stainless steel models	stainless steel	ø 25 cm	22.5 cm	1300149



## Instrument tray

The stable instrument tray with three feet and minimum water level indicator can also be used as a base plate for a wire basket or bottles. When purchasing a vertical autoclave, a instrument tray is already included in the scope of delivery.

Accessory for	Material	Diameter	Height	Article number
Aluminum models	aluminum	ø 22.5 cm	4 cm	1252203
Stainless steel models	stainless steel	ø 25 cm	4 cm	1300155



1300155

## Tray Set with 3 trays

The tray set with 3 trays made of stainless steel is suitable for nutrient media, instruments, material testing, etc. When purchasing a horizontal autoclave, a tray set is already included in the scope of delivery.

Accessory for	Material		Width	Depth	Height	Article number
VacPro 12	stainless steel	Rack	16.8 cm	33.5 cm	16.6 cm	8500479
		Trays	13.8 cm	29.5 cm	1.5 cm	
		usable height	3 cm*	3 cm**	3 cm**	
VacPro 22	stainless steel	Rack	20 cm	40 cm	20 cm	8500481
		Trays	17 cm	35 cm	1.6 cm	
		usable height	3 cm*	4 cm**	4 cm**	
icanCLAVE STE-45-T	stainless steel	Rack	25.9 cm	46 cm	26 cm	8500404
		Trays	22.6 cm	51 cm	1.7 cm	
		usable height	6.3 cm*	5.5 cm**	5.5 cm**	



\*upper tray  
\*\*centre and bottom tray

## Wire basket

The wire basket for convenient handling of autoclaving goods like solids, waste in bags, instruments, bottles, liquids or similar.

Accessory for	Material	Width	Depth	Height	Article number
VacPro 12	stainless steel	14.6 cm	30 cm	12.5 cm	8500401
VacPro 22	stainless steel	17.1 cm	38 cm	15.6 cm	8500403
icanCLAVE STE-45-T	stainless steel	22.5 cm	51.1 cm	20.6 cm	8500406



## Drip Tray

The drip tray is used to prevent chamber contamination by boiling over of liquids such as agar-agar, and as a base plate for bottles.

Accessory for	Material	Width	Depth	Height	Article number
VacPro 12	stainless steel	14.2 cm	29.8 cm	1.6 cm	1300765
VacPro 22	stainless steel	16.7 cm	37.8 cm	1.6 cm	1300767
icanCLAVE STE-45-T	stainless steel	22.2 cm	51.1 cm	1.6 cm	1300768



**SET wire basket & drip tray**

The SET includes a wire basket and a drip tray.

Accessory for	Material	Width	Depth	Height	Article number
VacPro 12	stainless steel	14.6 cm	12.5 cm	30 cm	8500408
VacPro 22	stainless steel	17.1 cm	15.6 cm	38 cm	8500410
icanCLAVE STE-45-T	stainless steel	22.5 cm	20.6 cm	51.1 cm	8500411



**Exhaust filtration**

**Exhaust filter**

Accessory for	Article number
MultiControl MultiControl 2	The pre-assembled exhaust filter consists of a condensation vessel, a heat-resistant exhaust hose and a High Flow Tetpor II Vent filter with a filtration capacity of 0.01 micron. 8582010



**Condensation vessel**

Accessory for	Article number
Vertical models, except Connect	The plastic condensation vessel is used to collect the condensation water. The vessel has a capacity of 5 liters and is supplied with a lid, a hose attachment, a heat-resistant exhaust hose made of silicone (length of 1 m) and two screw clamps. 8582020

**Exhaust hose**

Accessory for	Article number
Vertical models, except Connect	The exhaust hose is made of silicone and is supplied with 2 screw clamps. The hose is temperature resistant up to +180°C and has a length of 1 m. 8582016



**Filter cartridge**

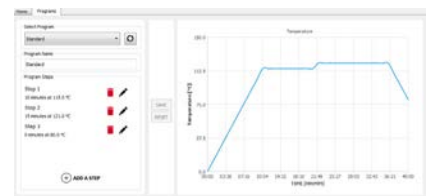
Accessory for	Article number
Exhaust filter	The filter cartridge replaces the filter of the exhaust filter after its wear. The High Flow Tetpor II Vent filter with a water-repellent PTFE membrane ensures particle separation down to 0.01 micron in steam. 8582011



**Process support**

**PC software professional version**

Accessory for	Article number
MultiControl MultiControl 2	With the Pro version of the MultiControl PC Software it is possible to program multi-step cycles (time and temperature), which can also be imported into the MC2 control unit. The PC software is available as a download. The license use is unlimited. 8500210



**Media sensor**

Accessory for	Article number
Connect	Media sensor for measuring temperature inside the autoclaving goods, especially in liquids, to ensure that the correct temperature has been reached. Only suitable with CertoClav Connect. The sterilisation process in CertoClav Connect can be set to be guided by the media sensor. Only available in conjunction with a new device. Installation takes place in the factory. 1300185



## Documentation & Quality Management

### Log printer

Accessory for	Article number
MultiControl MultiControl 2 VacPro 12-22 icanCLAVE STE-45-T	The external log printer is used to document and archive the sterilization cycles during sterilization. The logging is done on thermal paper. Includes power supply unit and data cable. 1300187 Dimensions: 12x11x20cm (WxHxD) Weight: 1 kg



### Thermal paper

Accessory for	Article number
Log printer	The thermal paper is manufactured without the use of bisphenol A (BPA-free) and has a shelf life of up to 7 years when stored correctly. The 10 rolls allow for a disruption- and trouble-free in everyday laboratory work. 8500496 Roll diameter: 58 mm Roll length: 40 m



### Label printer

Accessory for	Article number
VacPro 12 VacPro 22 icanCLAVE STE-45-T	The external label printer is used for labeling and tracing the sterilization items. The printer prints the expiration date and protocol information on a self-adhesive label. Includes power supply and data cable. 8500502 Dimensions: 12x19x21cm (WxHxD) Weight: 1.75 kg



### Direct thermal labels

Accessory for	Article number
Label printer	The replacement thermal label roll is equipped with 1000 white direct thermal labels. Our direct thermal labels are made of paper with a Top Coat coating for very good readability of the barcode and are removable. 8500507 Roll diameter: 80 mm Roll length: 1 roll of 1000 pcs



### Barcode scanner

Accessory for	Article number
VacPro 12 VacPro 22 icanCLAVE STE-45-T	The wired barcode scanner allows quick access to all sterilization protocols of the sterilization item by scanning the barcode. With the scanner you can easily and quickly scan all common 2D and 1D barcodes. 8500503 Dimensions: 17x7x10cm (WxHxD) Weight: 0.2 kg



### Template for IQ/OQ documentation

Accessory for	Article number
VacPro 12 VacPro 22	In addition to a factory IQ/OQ qualification, we also offer this template on a USB flash drive for documentation. 8500513



## Water supply

High-quality, clean and demineralized water is particularly important during autoclaving. Poor water quality leads to deposits in the autoclave chamber. We; therefore; offer a water treatment system for our autoclaves. The distillation unit is, like our autoclaves, a location-independent device. All its need is a power supply. The installation effort is minimal. To remove killing bacteria and viruses, the device distills 1.5 liters of water fully automatically within one hour by steam distillation. Before the water drips into the collection can, an activated carbon filter absorbs volatile organic compounds.

Water distiller		Article number
Accessory for		
all models	Power supply: 230 VAC, 50 Hz Power: 750 W Chamber volume: 3 liters Dimensions: 29x39x29cm (WxHxD) Gewicht: 3.5 kg	8500482



## Digital Quality Management

CertoCloud premium license		Article number
Accessory for		
Connect VacPro 12-22	The CertoCloud is a browser-based management software for our autoclaves.	8500212
icanCLAVE STE-45-T	Unlocks the premium functions of the autoclave:: <ul style="list-style-type: none"> <li>• Unlimited users</li> <li>• Unlimited real-time monitoring</li> <li>• Configuration possibilities of the autoclave</li> <li>• SMS Notifications</li> <li>• Online memory for 100,000 protocols directly at the autoclave</li> <li>• Remote Support</li> <li>• Seamless traceability of batches via CertoTrace</li> </ul>	

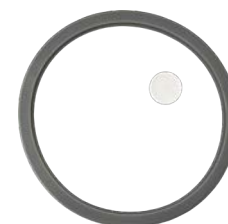


CertoServer		Article number
Accessory for		
Connect VacPro 12-22 icanCLAVE STE-45-T	CertoServer as a lab-internal private cloud without internet connection. For this, the CertoServer only needs to be integrated into the laboratory network. Benefits: <ul style="list-style-type: none"> <li>• All data remain within the company network</li> <li>• With pre-installed autoclave management software</li> <li>• Local server for management of and communication with the autoclave</li> <li>• Creation of automatic backups</li> <li>• Start at the push of a button</li> </ul> Dimensions: 11.6x11.2x4.5cm (WxHxD) Weight: 0.5 kg	8500508



# Wear parts

Service Set 1		
Accessory for		Article number
Aluminum models	The Service Set 1 for our vertical aluminum laboratory autoclaves includes one gasket each for the lid, the steam release spigot, the manometer and the pressure control valve and a steam release valve. The gaskets should be replaced every 2 years.	1250499
Service Set 2		
Accessory for		Article number
Stainless steel models	The Service Set 2 for our vertical stainless steel laboratory autoclaves includes one gasket each for the lid, the steam release spigot, the manometer and the pressure control valve and two steam release valves. The gaskets should be replaced every 2 years.	1310186
Service Set 3		
Accessory for		Article number
VacPro 12-22	The Service Set 3 contains a door gasket, a safety valve and a bacteria filter. The gasket and the safety valve should be replaced annually. The bacteria filter should be changed every 300 cycles and is also available separately. The Service Set 3 should only be installed by trained technicians.	8500495
Service Set 5		
Accessory for		Article number
icanCLAVE STE-45-T	The Service Set 5 contains a door gasket and a bacteria filter. The door gasket should be replaced annually. The bacteria filter should be changed every 300 cycles and is also available separately. The Service Set 5 should only be installed by trained technicians.	1310186
Bacteria filter		
Accessory for		Article number
VacPro 12-22	The bacteria filter should be changed every 300 cycles.	1300705
icanCLAVE STE-45-T		1300858



# Spare parts

If you have questions about our autoclaves, need spare parts or help with the installation, please contact us!

# Training & Education

We offer comprehensive technical training courses and training for our autoclaves. The courses are intended for technicians of authorized dealers. Upon successful completion, the course participants receive a certificate from us. If you are interested, please contact us for further information.

# For further questions, we are here to help you any time!

For further information, please visit [www.certoclav.com](http://www.certoclav.com) or contact our employees personally.

## Contact details

**Address**

CertoClav Sterilizer GmbH  
Peintner Straße 10  
A-4060 Leonding

**Phone**

+43 732 674 278

**Fax**

+43 732 674 278 20

**E-mail**

[office@certoclav.com](mailto:office@certoclav.com)

**Commercial register**

Landesgericht Linz  
FN122912d

**VAT-No.**

ATU22821702

**CEO**

Michael Dirix

**Production Management & Customer Service**

Anita Leibetseder  
[leibetseder@certoclav.com](mailto:leibetseder@certoclav.com)

**Purchasing & Quality Management**

Klaus David  
[david@certoclav.com](mailto:david@certoclav.com)

## Notes

The warranty conditions are described in the respective certificates.

Deliveries are made according to our terms and conditions, which can be seen at: <http://www.certoclav.com>

Images may differ insignificantly from the product. Illustrations are not true to scale.

## Imprint

© CertoClav Sterilizer GmbH

The illustrations, information and technical data contained in this publication correspond to the status of printing. The author accepts no liability for the topicality, correctness, completeness or quality of the information provided.

All technical data apply exclusively to unloaded devices in standard version at an ambient temperature of  $22 \pm 3$  °C and a mains voltage fluctuation of  $\pm 10$  %. We reserve the right to make technical changes.

# CERTOCLAV

**Address**

CertoClav Sterilizer GmbH  
Peintner Straße 10  
A-4060 Leonding

**Phone**

+43 732 674 278

**Fax**

+43 732 674 278 20

**E-mail**

office@certoclav.com



[www.certoclav.com](http://www.certoclav.com)

01.2021