



**FORM+TEST**  
PRÜFSYSTEME

## TEST SYSTEMS EM

Professional Solutions for  
Material and Components  
Testing



## UNIVERSAL TEST MACHINE EM

- Size** ■  $F_{\text{nom}}$ : 5 - 250 kN
- Accuracy** ■ class 1 (0.5 optionally) according to DIN EN ISO 7500-1: ASTM E4
- Specimens** ■ standard test pieces, components and parts in the destructive and non-destructive test range (e.g.: metals, elastomers, composites)
- Area of Use** ■ demanding static and quasistatic tests in research/development and quality control
- Test Fields** ■ aviation, car industry, ship building, railway vehicles, medical technology
- Application** ■ flexible configuration  
■ TENSILE-, COMPRESSION- and BENDING TESTS depending on accessories
- Frame** ■ modern design considering the ergonomic needs of the operator  
■ very rigid two-room test frame for flexible tests
- Drive** ■ powerful, maintenance-free, digitally controlled electromechanical drive  
■ pre-stressed ball screws, free from play
- Hand wheel** ■ for the manual drive of the test cylinder  
■ steplessly adjustable movement speed
- Force Measurement** ■ strain gauge force transducer for tensile and compressive forces  
■ optionally mounted on the piston rod or on the baseplate
- Options/Accessories** ■ broad range of specimen holders, tensioning equipment, compression plates, bending tables  
■ T-slot tables  
■ transport devices  
■ climate chambers  
■ protective equipment  
■ integrated operating elements



# UNIVERSAL TEST MACHINE EM

## Digital Control System\*

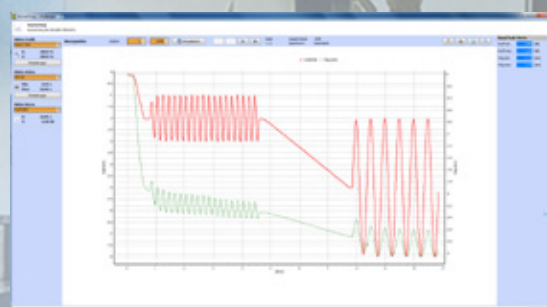
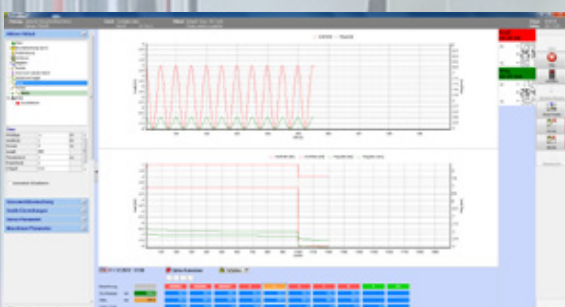
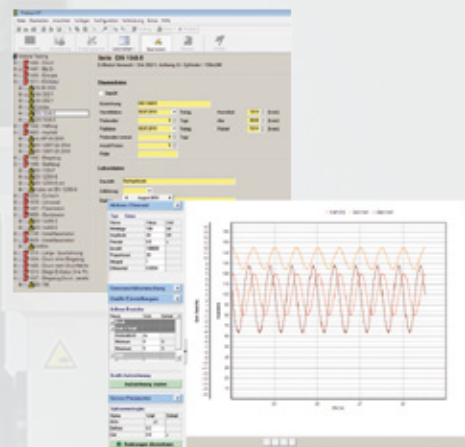
**Digital Control System** ■ control station RS-C30; 24-Bit digital controller DIGIMAXX C-30 ® for demanding static and dynamic tests

**Software** ■ „PROTEUS<sup>MT</sup>“ the user-friendly operating interface for the programming, execution and evaluation of static and dynamic tests

\* For detailed information on our control systems please see our catalogue PM 1000.01 or contact us.

## Advantages of the Universal Test Machine EM

- universal application area for tensile, compression and bending testing, static and quasistatic
- versatile application possibilities due to a variable set-up of the test structure (e.g.: tension-torsion; multicomponent applications)
- customer-specific modifications of the mechanical and performance specific data are possible any time






FORM+TEST Seidner&Co. GmbH  
Zwiefalter Straße 20  
D - 88499 Riedlingen

Phone +49 7371 9302-0  
Fax +49 7371 9302-99

[info@formtest.de](mailto:info@formtest.de)  
[www.formtest.de](http://www.formtest.de)



 made  
in  
Germany

