

**SS75C—Tilted Element™**



- 1-Internal Broadband Ceramic Assembly
- Depth & fast-response water-temperature sensor
- Available in 0°, 12°, or 20° tilted version
- Same elements and performance as the B765LH/LM offered in a low-profile housing
- Stainless transducer housing
- Boat Size: Up to 8 m (25')
- Hull Type: Steel or aluminum
- Useable shaft length ~ 95mm (3.75")
- **Requires 2-13/16" hole**

**Low-Frequency (L)**

- Low—Chirps from 40 kHz to 75 kHz, 32° to 21° beamwidth
- 35 kHz of total bandwidth from one transducer
- Covers popular fishing frequency of 50 kHz plus everything else in the bandwidth

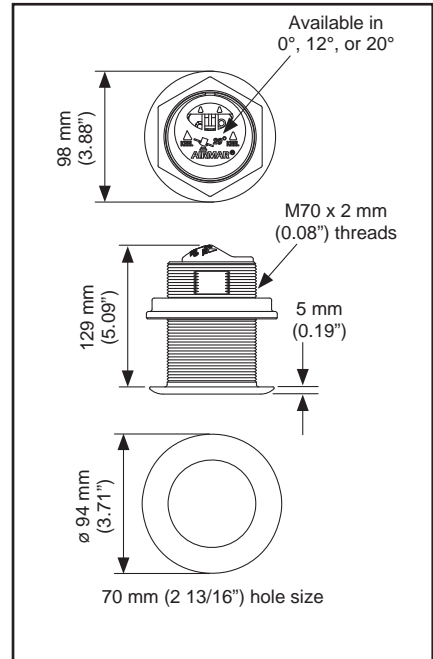
**Medium-Frequency (M)**

- Medium—Chirps from 80 kHz to 130 kHz, 24° to 16° beamwidth
- 50 kHz of total bandwidth from one transducer
- Covers popular fishing frequencies of 88 and 107 kHz plus everything else in the bandwidth

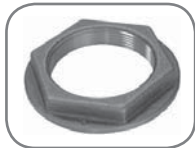
Medium-frequency benefits include the ability to sound deeper than the high-frequency, along with better target resolution than the low-frequency.

**High-Frequency (H)**

- High—Chirps from 130 kHz to 210 kHz, 15° to 9° beamwidth
- 80 kHz of total bandwidth from one transducer
- Covers popular fishing frequency of 200 kHz plus everything else in the bandwidth



**Parts & Accessories**



Hull Nut:  
02-143-01



Single Handle Wrench:  
75WR-4



Double Handle Wrench:  
75WR-3



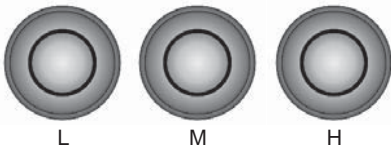
Single Handle Wrench:  
75WR-2




Crows Foot Wrench:  
75WR-1

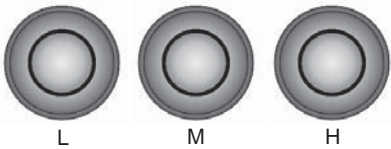



**SS75C—0° Transducers**—Single transducer for each frequency band (L, M, H)



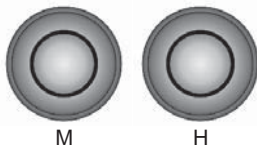
	No Connector	SS75C-0-L (0° Low-Frequency)	\$ CALL
		SS75C-0-M (0° Medium-Frequency)	\$ CALL
		SS75C-0-H (0° High-Frequency)	\$ CALL
		SS75C (Available for Raymarine CP450C. Must be used in pairs with A102146 "Y" Cable)	\$ CALL


**SS75C—12° Transducers**—Single transducer for each frequency band (L, M, H)



	No Connector	SS75C-12-L (12° Low-Frequency)	\$ CALL
		SS75C-12-M (12° Medium-Frequency)	\$ CALL
		SS75C-12-H (12° High-Frequency)	\$ CALL
		SS75 (Available for Raymarine CP450C. Must be used in pairs with A102146 "Y" Cable)	\$ CALL

**SS75C—20° Transducers**—Single transducer for each frequency band (L, M, H)



	No Connector	20° Low-Frequency Not available	
		SS75C-20-M (20° Medium-Frequency)	\$ CALL
		SS75C-20-H (20° High-Frequency)	\$ CALL
		SS75C (Available for Raymarine CP450C. Must be used in pairs with A102146 "Y" Cable)	\$ CALL