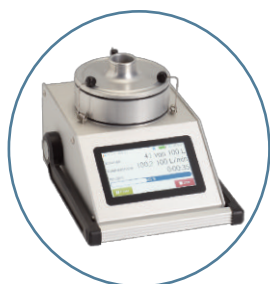


Air sampler LKS100 / LKS 30

Data sheet

The air sampler heads **LKS100** with an air flow of 100 l/min and **LKS 30** with an air flow of 30 l/min are perfect for air sampling of cultivable particles on culture media in standard petri dishes

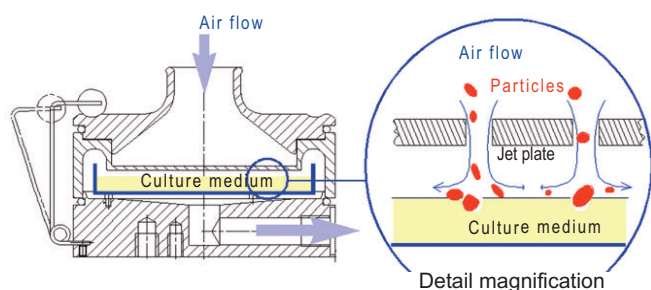


The air sampling head **LKS100 / LKS 30** are operated with the convenient **MBASS30** system, here on the **DuoSta** and the **Carbon fibre tripod**



The air sampling head **LKS 30** with base unit with hose connection, can be operated also with the separate diaphragm pump **MP2/39**

Function



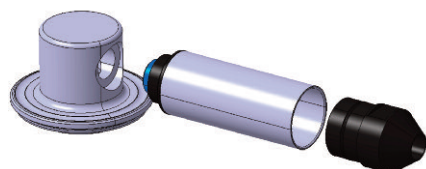
The sample air is conveyed from top to bottom through the air sampling head. The flow velocity is considerably higher in the nozzle area and the airborne particles to be collected are accelerated in the direction of the culture medium in the petri dish. Underneath the nozzle plate, the flow velocity is reduced due to the enlarged cross-section to the extent that most particles, based on their inertia, collide with the culture medium in the petri dish and remain there.

The performance specifications of the LKS100 and LKS 30

- ▶ The sampling heads are validated in accordance with EN ISO standard 14698-1
- ▶ The culture media attachment allows sampling in all operating positions
- ▶ The hose connection at the sampling intake allows sampling of hollow spaces
- ▶ The sampling heads are autoclavable
- ▶ The system is expandable with **PS 30** particle samplers and the **FA 30** filter adapter
- ▶ The high jet count (500 on the **LKS100**) reduces multiple occupancies with high bacterial counts

Technical data	Air sampling head LKS100	Air sampling head LKS 30	Air sampling head LKS 30 with basic unit with hose connection
Air flow	100 l/min		30 l/min
Cut off value ($d_{ae 50}$)	1,1 μm		0,9 μm
Number of roud jets	500		324
Sample media	Standard petri dish 90 - 95 mm x 15 mm (DxH)		
Sample air nozzle	extendable with hose (5/4 inch)		
Dimensions (L x B x H)	110 mm x 110 mm x 70 mm		125 mm x 142 mm x 100 mm
Weight	400 g		970 g
Pump connection	-	-	Nozzle for 8 mm hose
Tripod socket	-	-	UNC 1/4 inch (photo) and UNC 3/8 inch (microphone)

Optional transvers adapter and suction nozzles



With the transverse adapter for horizontal air intake via air sampling heads **LKS100** and **LKS 30** isokinetic microbiological air sampling of external flows can be performed. With corresponding suction nozzles, which are installed onto the transverse adapter, the flow velocity in the channel is adapted to the volume flow of the air sampler.

