

LABstar

INERT GAS GLOVEBOX WORKSTATION



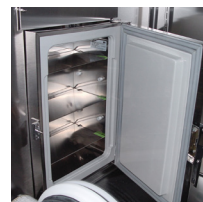
myMBRAUN App



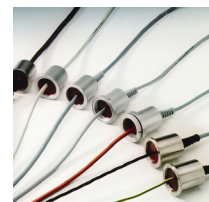
- Compact design with integrated purifier unit
- Stainless steel enclosure with polycarbonate window
- Removal of oxygen and moisture, <1 ppm
- PLC - M. Braun controller with large color touch panel
- Large antechamber with sliding tray
- Closed loop recirculation
- Negative and/or positive pressure operation
- Foot pedal switch for temporary pressure adjustment
- ECO Mode operation feature available
- Live monitoring of your glovebox data with myMBRAUN Application
- Optional control and safety features available

LABstar

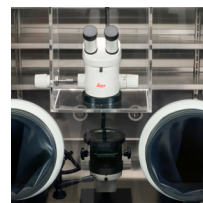
GLOVEBOXES AND ACCESSORIES



Freezer



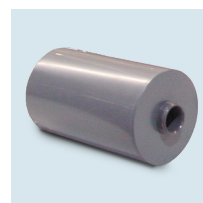
Feedthroughs



Microscopes



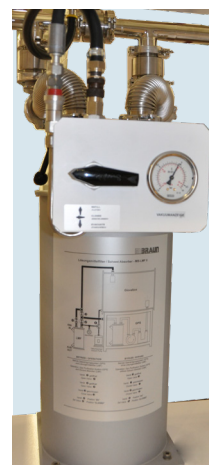
Oxygen, moisture and solvent sensor



Internal solvent vapor removal



Mini-antechamber



External solvent vapor removal, regenerable

GLOVEBOX TECHNICAL DATA

Type of construction	Side panels bolted on the box body
Material	Stainless steel (US 304, 1.4301)
Inside lengths	1200 / 1450 / 1950 mm
Inside depth	780 mm
Inside height	920 mm
Leak rate	< 0.05 Vol%/h
Inside surface	Brushed finish Ra 1.2 µm
Outside surface	Coated, white (RAL 9003)
Window	Scratch resistant polycarbonate window
Glove ports	POM, 220 mm diameter, O-ring sealed
Gloves	Butyl, thickness 0.4 mm
Light	LED lamp
Feedthroughs	2 / 3 / 4 DN40KF flanges (depending on box length)
Electrical feedthrough	1
Dust filter	HEPA H13 in/out
Shelves	3 modular shelves (length: depending on box length)

OPTIONAL

Cold well
Safety glass window
Large choice of feedthroughs for signals, gas, liquids
A variety of gloves (Hypalon, Neoprene and Butyl) and thickness sizes are available
Specific shelves and storage arrangements....

MAIN ANTECHAMBER TECHNICAL DATA

Type	Cylindrical
Material	Stainless steel
Dimensions	390 x 600 mm (D x L)
Inside surface	Brushed finish
Outside surface	Coated, white (RAL 9003)
Leak rate	< 10E-4 mbar l/s
Sliding tray	Stainless steel
Dimensions of sliding tray	575 x 290 mm (L x W)
Doors	Aluminum, anodized, thickness 10 mm
Door lock	Door closing mechanism with spindle handle for one hand operation
Pressure gauge	Analog display
Vacuum / Refill process	Manual operation via hand valves
Valves	Hand valves (DN40 vacuum line / DN8 refill line)

OPTIONAL

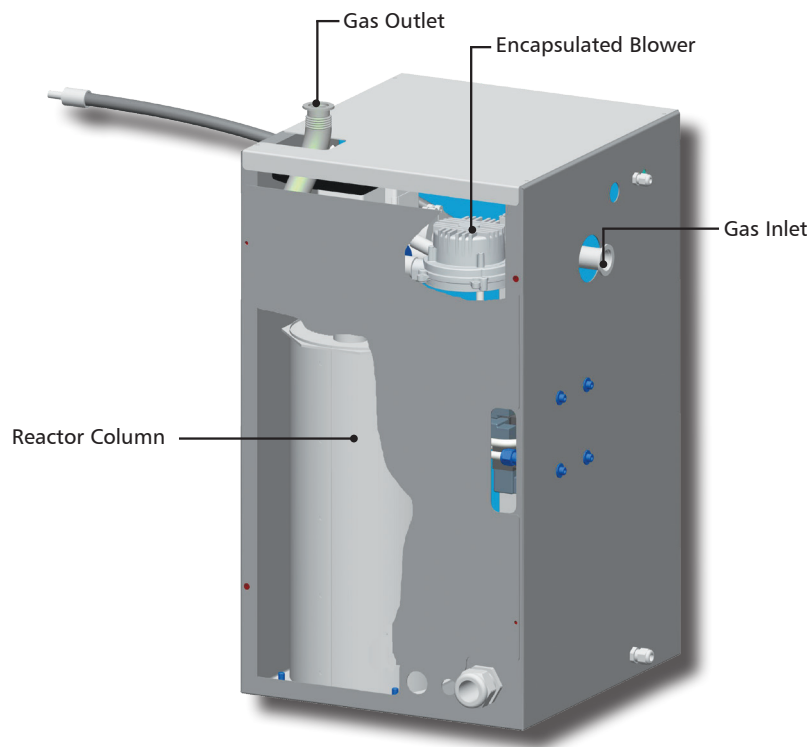
Time controlled antechamber operation
Round large main antechambers
Round mini antechambers (side or bottom mounted)
Rectangular square antechamber
L-shaped square antechamber
Round T-shaped antechamber
Square T-shaped antechamber...

LABstar

GAS PURIFIER UNIT



PLC - M. Braun controller with large color touch screen



GAS PURIFIER UNIT TECHNICAL DATA	
Operation principle	Closed loop recirculation
Attainable purity level	Moisture < 1 ppm, Oxygen < 1 ppm
Recommended enclosure volume	Up to 2 m ³
Number of purification lines per purifier	1
Number of reactor columns per line	1
Number of reactor columns per purifier	1
Reactor capacity per purification line*	
(O ₂) Oxygen	20 l
(H ₂ O) Moisture	900 g
Regeneration	Automatic regeneration sequence
Control unit	PLC - M. Braun
Display	Large color touch panel
Box pressure control	Automatic pressure control with foot switch (\pm 15mbar)
Vacuum pump*	Rotary vane pump with 17 m ³ /h (10 CFM)
Blower (50 Hz / 60 Hz)*	Variable speed up to 45 m ³ /h
Main and side piping	Stainless steel 1.4301 (SUS 304)
Main and control valves	Electro-pneumatic
Regeneration gas	N ₂ /H ₂ mix. or Ar/H ₂ mix. (H ₂ 2-5 %, optional H ₂ >5%)
Working gas	Nitrogen, Argon or Helium
Size	472 x 459 x 705 mm (L x W x H)



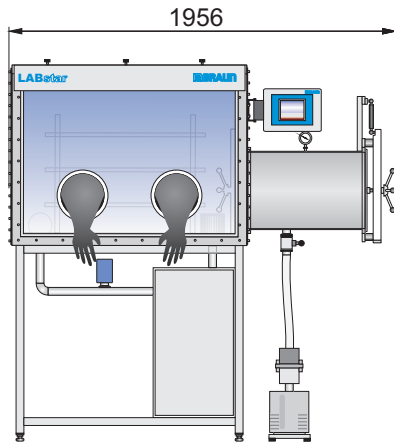
ECO Mode operation

The ECO mode option is designed to reduce noise emission and reduce power consumption up to 90%*.

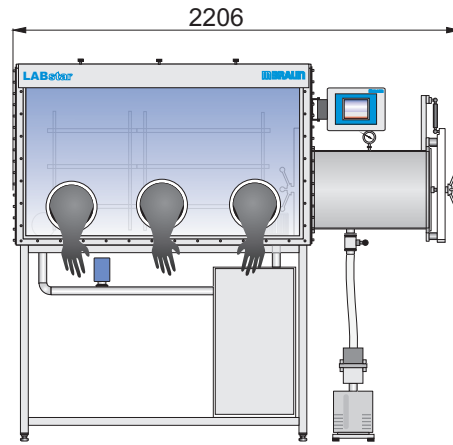
OPTIONAL
Moisture and oxygen analyzer
ECO Mode
myMNBRAUN App
Solvent vapor removal
Dry pump upgrade
Box purge function
Antechamber automatic (time controlled)
Freezer

*Technical note: Depending upon operating conditions

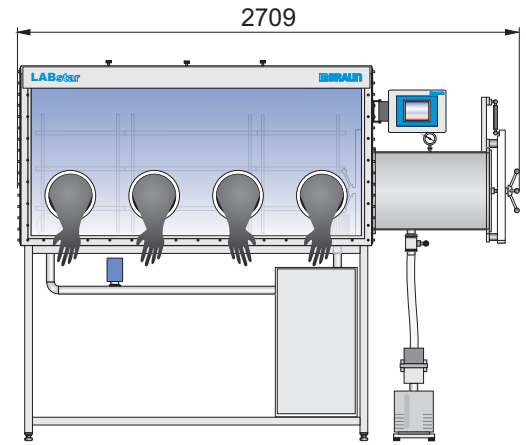
SIZES AND CONFIGURATION



Weight: 325 kg



Weight: 360 kg



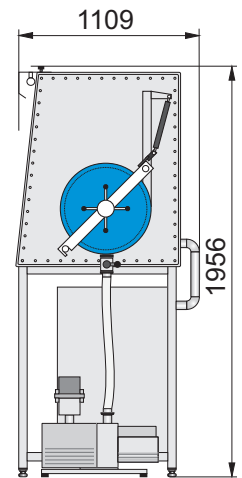
Weight: 460 kg

GLOVEBOX VOLUMES

Box length: 1200 mm	0.8 m ³
Box length: 1450 mm	1.0 m ³
Box length: 1950 mm	1.3 m ³

UTILITIES

	Medium (or type)	Pressure	Flow rate	Connection
Working gas	Nitrogen, Argon or Helium	6 bars	250 l/min	Swagelok Ø 10 mm
Regeneration gas	N ₂ /H ₂ mix. or Ar/H ₂ mix. (H ₂ 2-5 %, optional H ₂ >5%)	0.3 - 0.4 bar	15-20 l/min	Swagelok Ø 10 mm
Regeneration gas exhaust	Flexible hose, 9 x 3 mm			
Vacuum pump exhaust	Depressurized flexible hose, diameter not less than 25 mm (to be supplied by customer)			
Electrical power (FLA)	230 V/50-60 Hz, 6 A or 115 V/50-60 Hz, 12 A or 100 V/50-60 Hz, 13 A			



M. Braun Inertgas-Systeme GmbH (Headquarters)
 Dieselstr. 31 • D-85748 Garching • Germany
 Phone: +49 89 32669-0 • Fax: +49 89 32669-105
 E-Mail: info@mbraun.de
 Commercial Register: District court Munich, HRB 51084
 VATIN: DE129406284

M. Braun Incorporated
 14 Marin Way • Stratham, NH • 03885 • USA
 Phone: +1 (603) 773 9333 • Fax: +1 (603) 773 0008
 E-Mail Sales: info@mbraunusa.com
 E-Mail Service: service@mbraunusa.com

M. Braun Inertgas Systems (Shanghai) Co., LTD
 Ground floor of building #1 • No. 145 Jintang Road
 Tangzhen, Pudong, Shanghai • 201201 • P.R.China
 Phone: + 86 21 5032 02 57 • Fax: + 86 21 5032 02 29
 Web: www.mbraunchina.com

M. BRAUN ENGINEERING COMPETENCE

With 40 years of engineering
 experience and world-class
 core technology, we develop
 and produce individual, custo-
 mer-specific large-scale plants.
 Discover the possibilities:
www.mbraun.com