



Tabletop SEM

SNE-4500M Plus



1. 追求操纵便利性的人性化设计
2. 5nm超高分辨率
3. 五轴全自动马达台, 可迅速位移
4. CCD导航系统, 便于定位
5. 可同时安装SED、BSED和EDS探测器
6. 广泛的加速电压范围(1KV ~ 30KV)

SPECIFICATION

| | |
|----------------------|--|
| Magnification | 150,000x |
| Resolution | 5nm |
| Detector | SE / BSE |
| Vacuum | High / Low |
| Stage | X, Y, Z, T, R Fully Motorized |
| Acceleration Voltage | 1KV ~ 30KV (1/ 5/ 10/ 15/ 20/ 30) - 6 Step |
| Automation Function | Start, Focus, Stigmator, Contrast & Brightness |


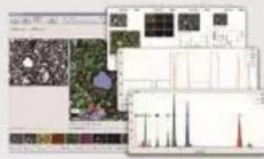
www.secengchina.com

EDS System



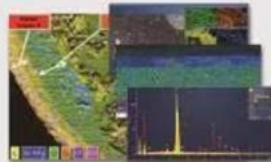
XFlash® 630 EDS

- High speed embedded type SDD Detector (No LN2 required)
- Energy resolution: Less than 129 eV (at Mn Ka)
- Detector area: 30mm
- Element detection range: B(5) – Am(95)
- Maximum input count rate: > 150 kcps
- Software: Qualitative or Quantitative Analysis
- Analysis Modes: Point, Circle, Polygon, Line Scan, Mapping



Xplore Compact30

- 15mm² and 30mm² Sensor Sizes
- Guaranteed Mn Ka < 129eV resolution on users microscope
- Max count rates in excess of 1Mcps
- Fully field replaceable components ensure Minimal downtime and Maximum uptime

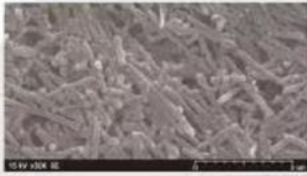




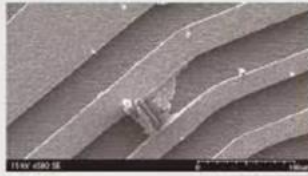
Seeing Nano and Analyzing

Applications

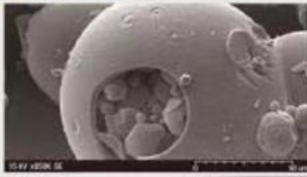
■ Battery Cell



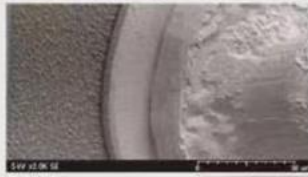
■ FPCB Pattern



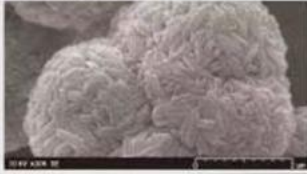
■ Polymer



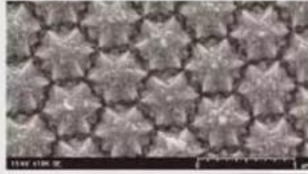
■ LED Bonding



■ Cell Powder



■ Gallium Nitride



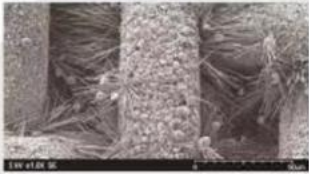
www.secengchina.com



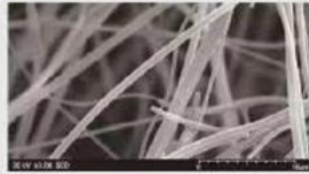
Seeing Nano and Analyzing

Applications

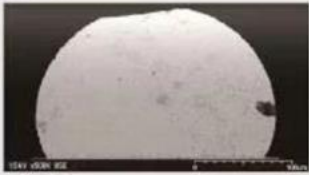
■ Oil Filter



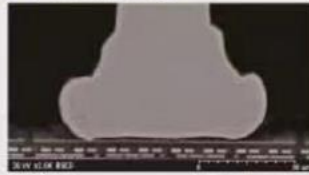
■ Nano Fiber



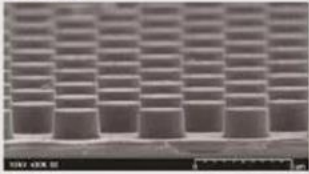
■ BGA



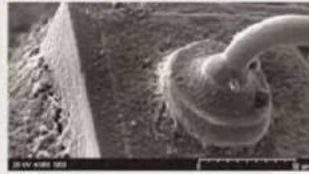
■ Wire Bonding



■ Wafer



■ LED - Wire Bonding



www.secengchina.com