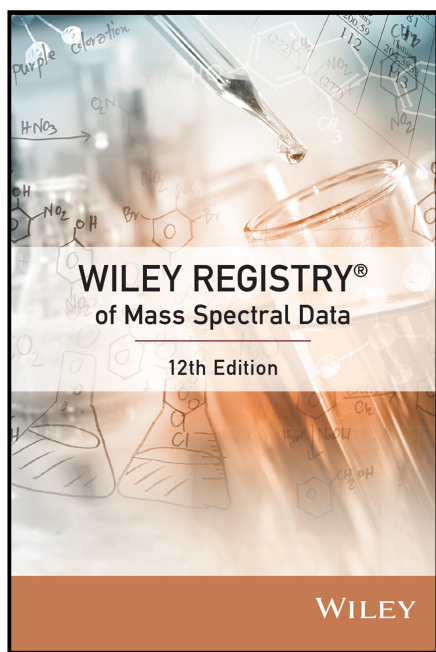


# Wiley Registry<sup>®</sup> of Mass Spectral Data, 12th Edition

## Confident compound identification with the most comprehensive GC-MS library



The field-tested *Wiley Registry<sup>®</sup> of Mass Spectral Data, 12th Edition* is the largest mass spectral library commercially available, providing over double the compound coverage of our competitors. Applications include untargeted GC-MS screening and accurate mass workflows with MS-TOF instruments.

Experience improved spectral search performance with the 12th Edition. The latest version was extensively validated to sequester and remove suspect spectra from the main library. The new edition also introduces the inclusion of **chemical classifications**, **calculated Kovats retention indices**, and **splash IDs**.

The 12th Edition provides researchers the most assurance that their untargeted spectral search is the broadest available. Expansion on the new edition brings an additional 41,450 spectra into the library.

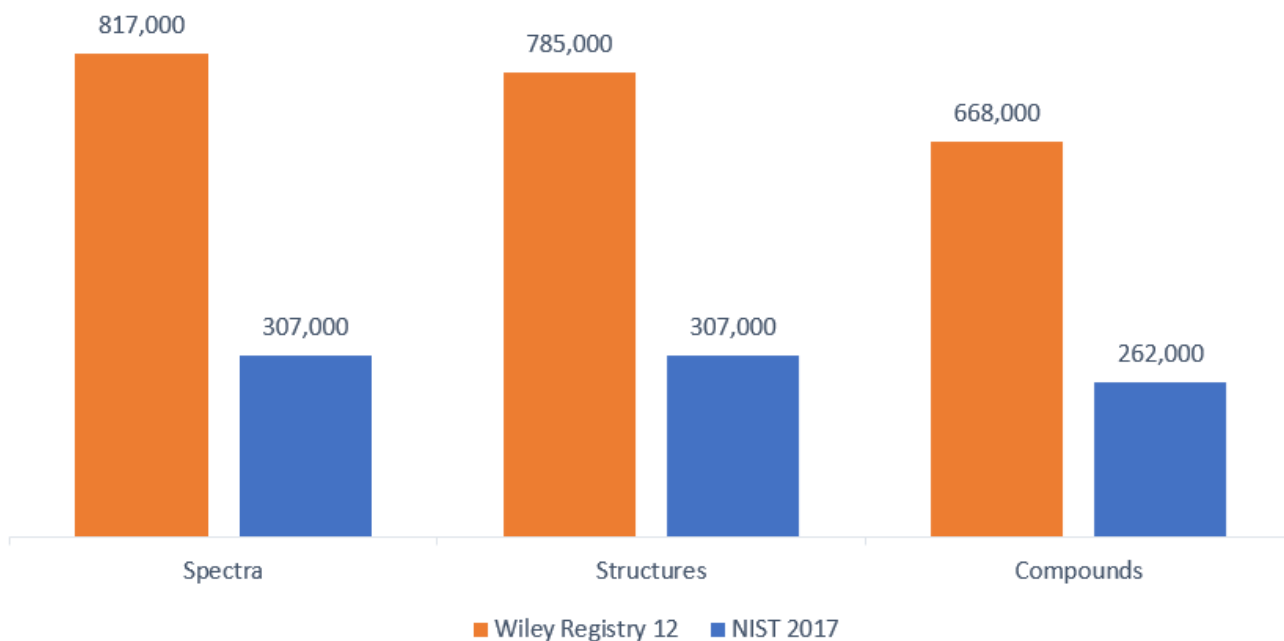
### Specifications

- De-duplication of spectra into 4 separate libraries
- Chemical classifications
- Calculated Kovats RI values
- Splash IDs
- Mass Spectra: **817,290**
- Searchable Chemical Structures: **785,061**
- Unique Compounds: **668,435**

	W12 v W11	W12 v W10	W12 v W9	W12 v N14	W12 v N11
Spectra	817,290 v 775,818	817,290 v 719,000	817,290 v 662,000	817,290 v 510,532	817,290 v 240,000
Searchable Structures	785,061 v 741,000	785,061 v 684,000	785,061 v 565,133	785,061 v 370,632	785,061 v 212,000



## Coverage



Compound coverage can be searched at [www.compoundsearch.com](http://www.compoundsearch.com)

## Compatibility

Compatible with most current and legacy mass spectrometry data systems including:

- Agilent ChemStation, MassHunter, OpenLab\*
- Bruker MS Workstation\*
- Chromatec Analytic\*
- JEOL msFineAnalysis\*
- Leco ChromaTOF\*
- NIST MS Search
- PerkinElmer TurboMass
- Scion MS Workstation\*
- Shimadzu GCMSsolutions
- Thermo Chromeleon™\*, TraceFinder™\*, Xcalibur™
- Waters MassLynx

### Other options available:

- ACD/Labs ACD/Spectrus Processor\*\*
- Bio-Rad KnowItAll®\*
- Wiley Spectra Lab\*\*

\*Compatible with the NIST format

\*\*Subscription required

<https://sciencesolutions.wiley.com>

**WILEY**