

REBEL

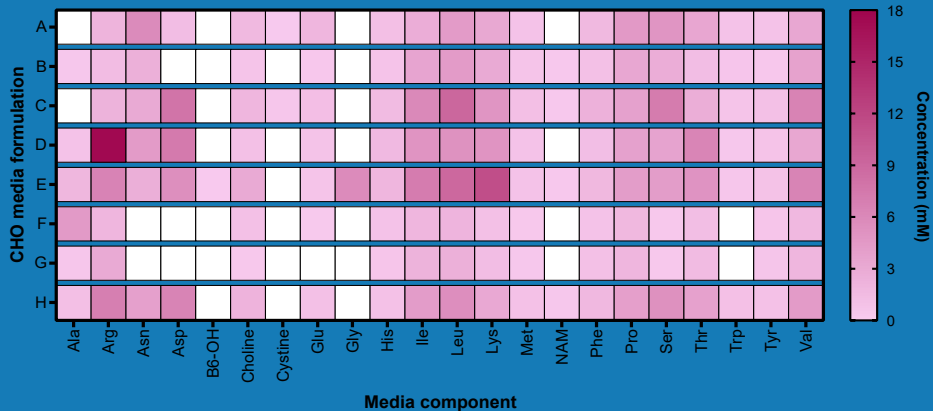
**Say no.
To the core.**





SKIP THE STATUS QUO

YOU run the Rebel right at the bench. The core lab doesn't have to lift a finger. In 6.5 minutes, the Rebel gives you a quantitative list of amino acids, dipeptides, water soluble vitamins and amines. Combine that with your other standard biochemical markers and make decisions in a snap.

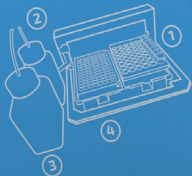


Comparison of chemically defined cell culture media optimized for CHO and run on the Rebel. Components that were absent or not detected are shown with white boxes.

REBEL

Refrigerate Rebel Standards vials until use. Do not freeze!

- 1 Place Rebel Standards vials into F1-F7 in right vial holder. PQ vials (blue caps) are F1-F2.
- 2 Attach dip tube and cap to empty Waste bottle. Load into rear position as shown.
- 3 Remove BCE cap. Attach dip tube and cap. Load into front position as shown.
- 4 Dilute samples with Diluent and load into sample vials or provided microwell plates.



UNBOX AND GO

Rebel consumable kits take the guesswork out of prepping media samples for analysis. Reagents are premixed, and each kit comes with electrolyte, diluent, standards, sample plates, and a chip. That's everything you need to run 200 samples. All in one box.

REBEL
Spirit Media Analysis Kit

REBEL Diluent
Spirit Media Analysis

REBEL BCE
Spirit Media Analysis

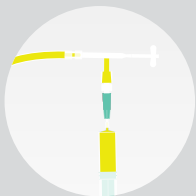
REBEL Standards
Spirit Media Analysis

REFRIGERATE
VIALS AT 2-8°C
DO NOT FREEZE

DEFY YOUR WORKFLOW

The Rebel is simple: pull a bioreactor sample, spin it down, and dilute. Load it in and hit start. Run samples solo or in 96-well plates if you're a real go-getter. The Rebel puts the control in your hands. Get real-time data on over 30 components in your cell growth media in just a few minutes.

1



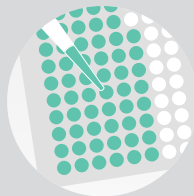
Pull a sample

2



Spin and dilute

3



Load samples

4



Generate results

FREE YOURSELF

There's no futzing with settings or analysis. The Rebel already knows which knobs to turn, and data analysis is validated ahead of time. At the end of the run, you'll have a full report on analytes detected and their concentration.





Rebel@908devices.com | 908devices.com/rebel

© 2019 908 Devices