

Moving SFC and SFE Forward

## Prep SFC 150 AP System

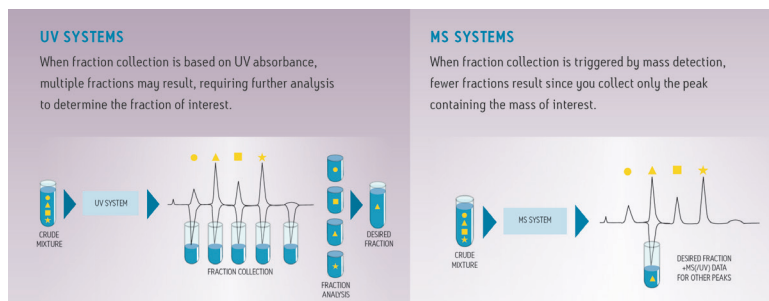


Designed for automated UV and/or MS triggered purification, the Prep SFC 150 AP™ System is the first and only commercially available preparative SFC system, offering automated sample handling, column switching, fraction collection, and tracking in an easy-to-use, open bed format.

The Prep SFC 150 AP system provides routine compound purification for drug discovery labs, using the Waters™ MassLynx™/FractionLynx™ Application Manager. This system offers fast separations, high resolution, and high throughput. The inherent benefits of SFC, combined with Waters world renowned service and support, provides users with a robust, cost-effective solution to any purification lab.

The Waters Prep SFC 150 AP automates the purification process by linking analytical pre-screen, purification and fraction re-analysis with AutoPurify in an “open access” setting. Stacked injection capability is also available for the purification of large amounts of material, delivering multiple injections, and allowing for multiple peaks collected into separate vessels.

SFC systems utilize liquid Carbon Dioxide (CO<sub>2</sub>) as its main mobile phase in combination with one or more organic solvents, resulting in faster equilibration, lower pressure drops across the column, solvent reduction, and lower cost per sample. The process is reproducible and applicable to a wide range of compounds relevant in the Pharmaceutical, Life Sciences, Chemical Materials, and Food & Environmental markets.



### Key features

#### QGM Low Pressure mixing Quaternary

**Gradient Pump:** This pump delivers flowrates up to a maximum of 150 mL/min as serves as the co-solvent delivery device for this system.

**P200X CO<sub>2</sub> Pump:** This is a high pressure delivery pump having dual stainless steel heads with a cam driven sapphire piston assembly, self priming check valves, pressure sensor, pressure gauge, brushless motor, and a rupture disc assembly. The pumps design lends itself to control based upon feedback from the pressure sensor and mass flowmeter.

**Modifier Stream Injector:** This design supports customers requests of Modified Stream Injection ONLY. Its function is to inject one sample at a time using a standard 2 mL loop and a 5 mL syringe. This device allows for settable air gaps on either side of the sample. The air gap functions as a buffer between the solvent and the sample decreasing dilution.

**2767 Sample Manager:** This module provides injection and collection capability in an open bed format. The system includes the fume hood assembly for the 2767 for CO<sub>2</sub> management. Injection and collection racks must be ordered for the system. The specific racks required will be determined by your needs and requirements.

**Gas-Liquid Separator (GLS):** The Gas-Liquid Separator provides the capability to achieve open bed operation of the fraction collection system. It ensures minimum CO<sub>2</sub> at collection but also preserves peak integrity. Sample carry-over concern is removed due to the cleanliness method built in a software routine.

►► Learn more at [www.waters.com/PrepSFC150AP](http://www.waters.com/PrepSFC150AP)

Waters, The Science of What's Possible, Prep SFC 150 AP, MassLynx, and FractionLynx are trademarks of Waters Corporation. All other trademarks are the property of their respective owners.

©2018 Waters Corporation. Produced in the U.S.A. 720006433EN November 2018 TC-SIG

**Waters**  
THE SCIENCE OF WHAT'S POSSIBLE.™