

High-performance liquid chromatography device

e-HPLC ことり

e-HPLC Kotori



An unprecedented compact high-performance liquid chromatography device that integrates basic functions has been realized.



UNI-FLOWS

Motacilla alba lugens

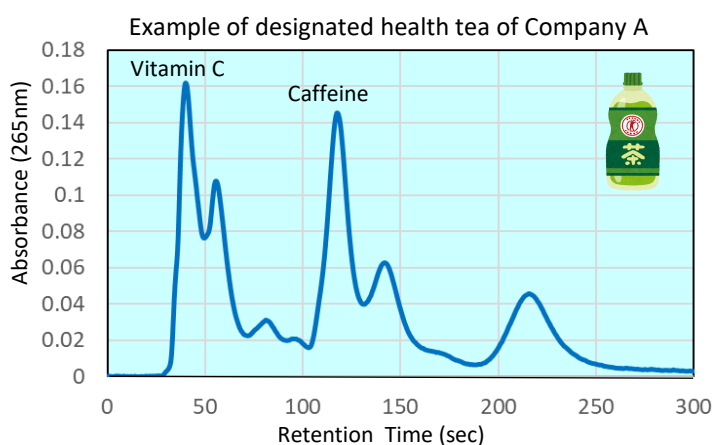
e-HPLC Kotori 5 points

1	紧凑	只有三张A4纸大小（除双泵外）
2	可选择的检测器	可选择吸光度或者电导检测器
3	两种泵	单泵和双泵（可走梯度）
4	分析时间短	1个样品可以在5分钟内分析完毕
5	操作简单	可以简单地通过开关注射器操作

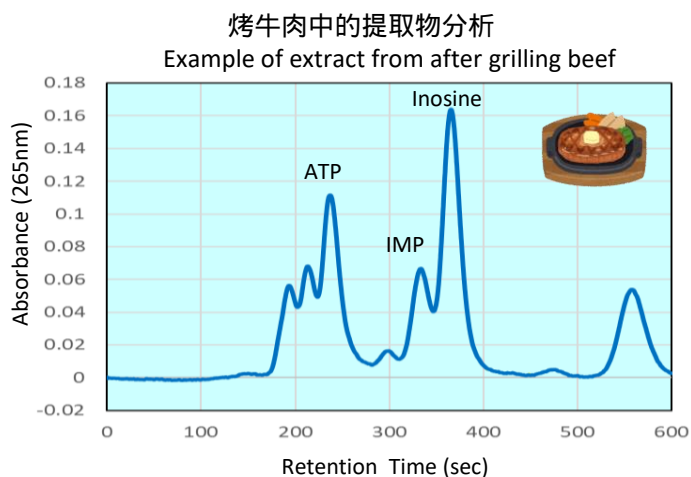
分析案例

分析可能在5分钟内每个样品!也可用于预分析。

分析结果可以被覆盖，也可以作为分析的CSV文件输出。



Flow rate 1ml/min
 Eluent Water 84.9%, ethanol 15.0%, acetic acid 0.1%
 Column PEGASIL ODS SP100 $\Phi 6 \times 30$ mm
 Detector 265nm and 405nm Sample volume 3 μ L



Flow rate 0.5ml/min
 Eluent 200mM Phosphate buffer (pH3.0)
 Column Shodex Asahipak GS-2G 7B $\Phi 7.6 \times 50$ mm
 Detector 265nm and 405nm Sample volume 3 μ L

Detailed specifications (detector absorbance type) devices include standard, chemical-resistant, and non-metallic types.

Product name	e-HPLC Kotori
Carrier bottle and drain bottle	100ml (Material HDPE)
High pressure syringe pump	Maximum volume 11ml
Measurement pressure:	2MPa or less
Sample injection volume	2.7 μ L
Column	$\Phi 6 \times 30$ mm (Example)
Detector	2 wavelengths of 265nm and 405nm, auto zero function, auto gain switching function
Operation	Operates simply by switching the lever of the sample injector
Setting data display	USB connection with PC and setting and data display using specialized software *Computer Windows compatible
External input/output	USB Type-B
Data	Output and save CSV file data to a PC connected via USB
Dimensions	Width 80mm x Depth 200mm x Height 300mm
Weight	Approximately 2.1kg
Power supply	Comes with DC24V 1A AC adapter

中国区总代理：上海永毓科学仪器有限公司

电话：021-56482765 13501897166

