

Anyeep



ANYEEP MINI 2000

便携式连续大气压接口质谱仪

苏州安益谱精密仪器有限公司

Suzhou ANYEEP Precision Instrument Co., Ltd

仪器介绍 --- Instrument Brief

- ❖ 兼容多种离子源适配不同样品种类

Multiple ion sources compatible with various types of samples

- ❖ 15kg 的轻量型机身融合多项技术研究成果

15kg miniaturized body consists of many results and experiments from study

- ❖ 简短的操作提高样品处理效率

Concise operation aimed for higher processing efficiency

- ❖ 较低的真空度下工作使机器总能迅速进入最佳状态

Lower vacuum environment processing always helps boost into the best working condition

- ❖ 灵活的设定拓宽检测范围可达 2500 Da

Flexible parameter settings broaden the upper limitation to 2500 Da

- ❖ 1ppb~10ppm 的 4 个数量级动态范围区间

1ppb~10ppm covers 4 log dynamic range

- ❖ FWHM 0.3 Da 的高分辨

FWHM 0.3 Da high resolution

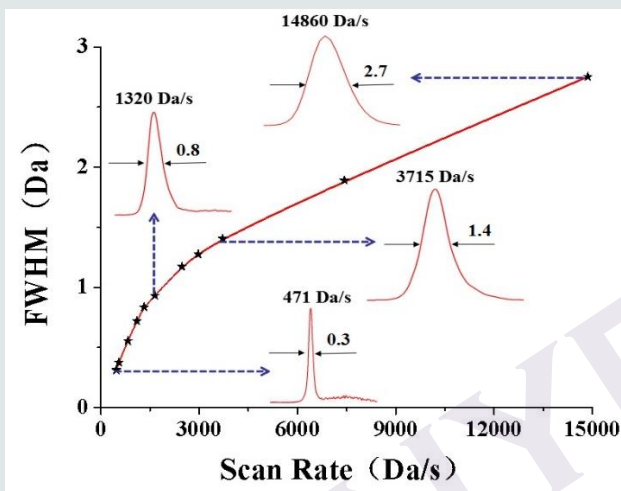
- ❖ 稳定的重现性能保证实验数据的真实有效

Stable capability of repetition ensures the validity of data

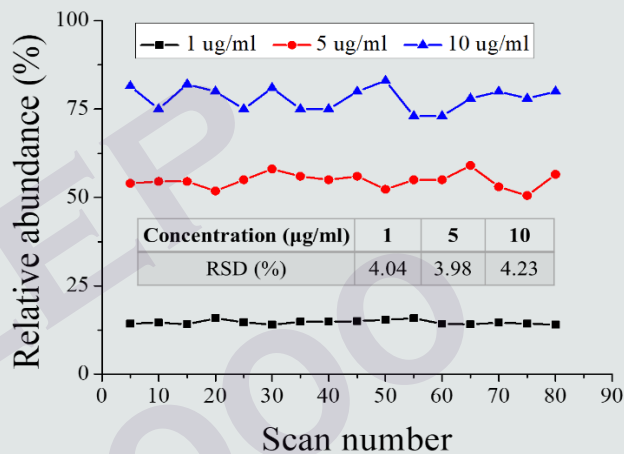
- ❖ 在线监测软件随时记录或打开参数等数据以构建强大的数据内容库

Online monitoring software helps timely record and reopen the data or preset parameters aimed for powerful data pool construction

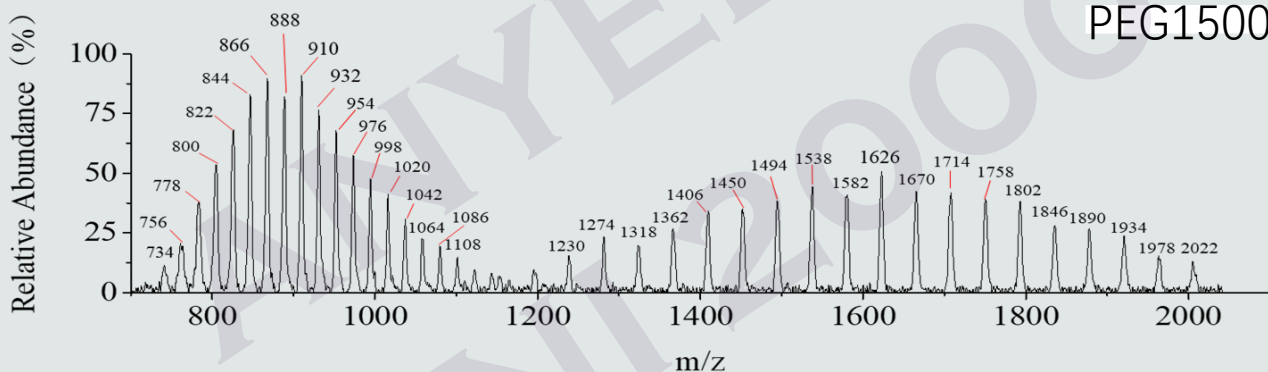
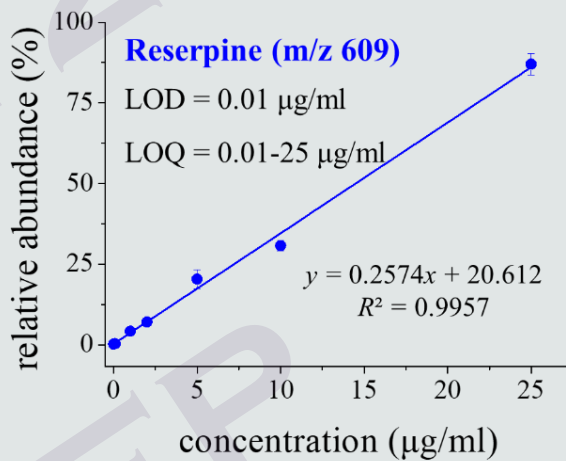
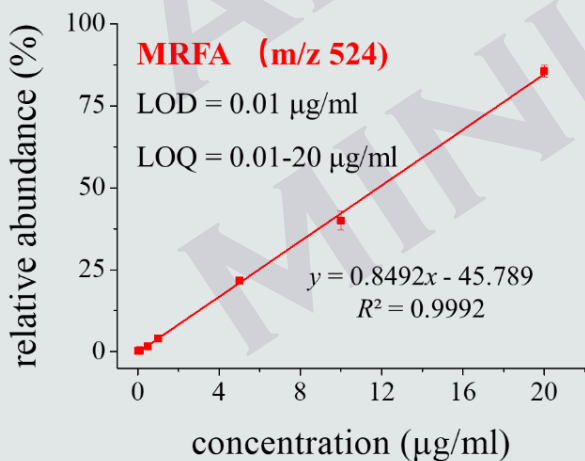
紧凑机身内含强大性能 —— Robust Performance



分辨



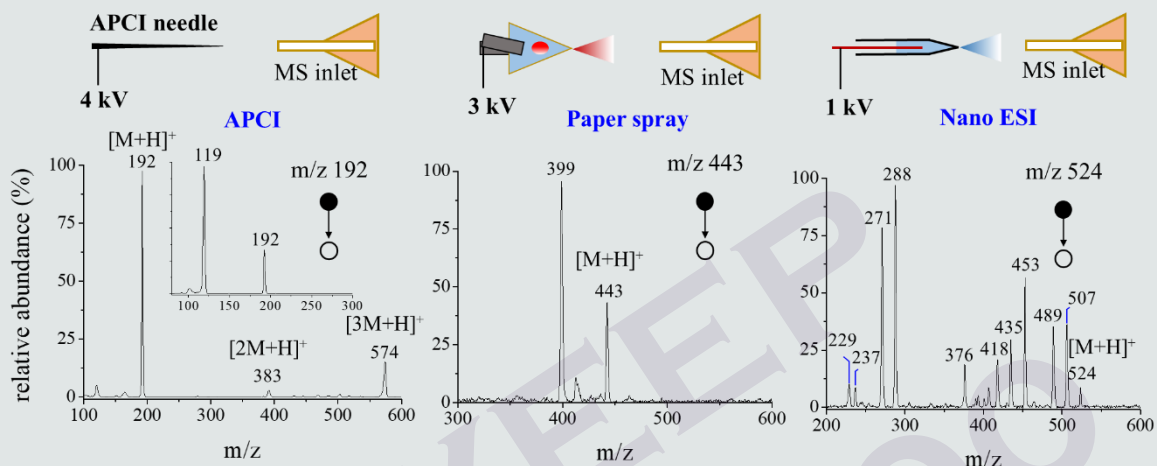
重现性



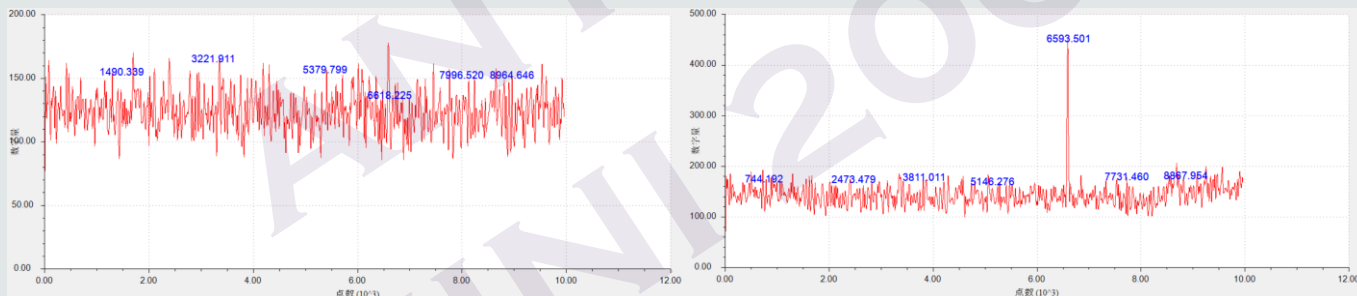
PEG1500

检测范围

紧凑机身内含强大性能 —— Robust Performance

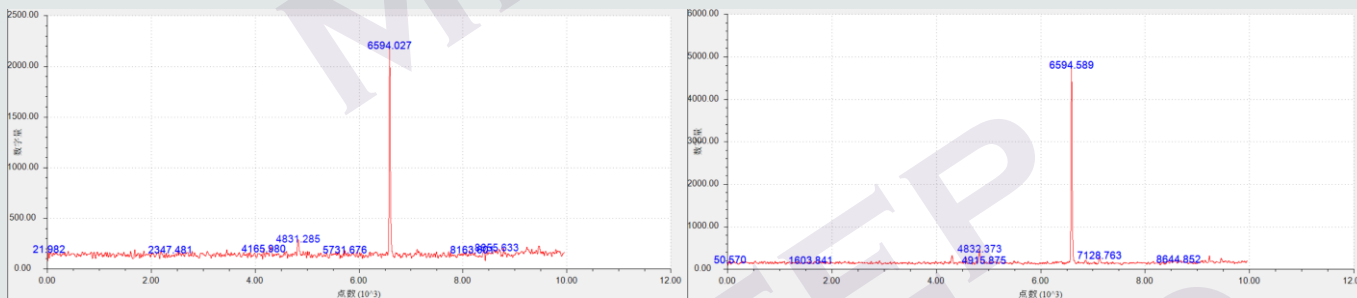


兼容多种大气压离子源



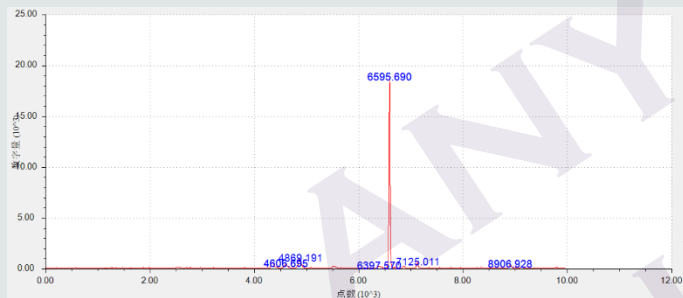
罗红霉素甲醇水溶液 1ppb 浓度 CID1 谱图

罗红霉素甲醇水溶液 10ppb 浓度 CID1 谱图



罗红霉素甲醇水溶液 100ppb 浓度 CID1 谱图

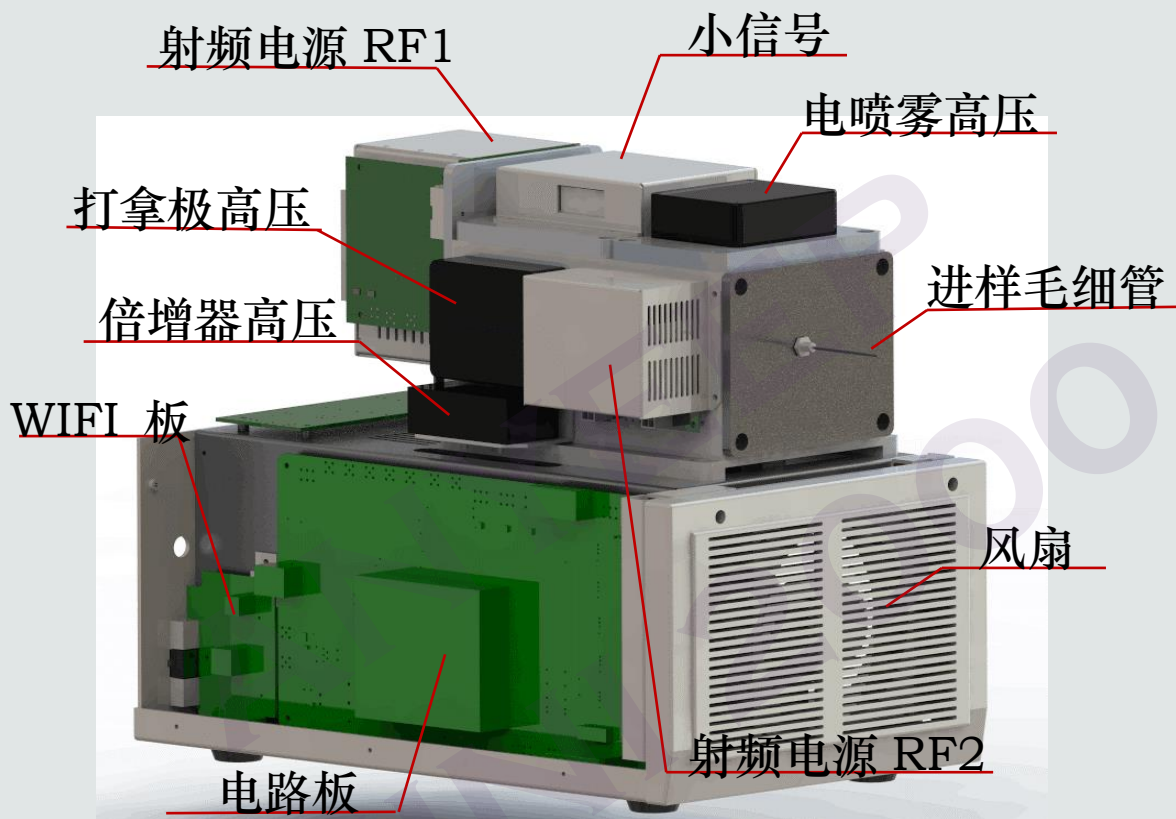
罗红霉素甲醇水溶液 1ppm 浓度 CID1 谱图



罗红霉素甲醇水溶液 10ppm 浓度 CID1 谱图 (接近饱和)

在 300ms 进样时间下 1ppb-10ppm 浓度实现跨度 4 个数量级的动态范围

外观与结构 —— Appearance & Structure



视图展示



苏州安益谱精密仪器有限公司

Suzhou ANYEEP Precision Instrument Co., Ltd

☎ 0512 – 6671 9016

🏠 苏州高新区泰山路 2 号博济科技创业园 D 座 310