

High-end fluorescent microscope with autofocus and cell counting software

# Lactoscan Somatic Cell Counter

The world's **LOWEST PRICED**  
**IMAGE FLUORESCENCE**  
**CELL COUNTER**

10" fully functional touch screen tablet  
Embedded printer

Test results within 20 to 60 seconds



**LACTOSCAN**  
SOMATIC CELLS COUNTER  
7/1/2014 10:52:28  
ID= 43D  
LACTOCHIP-QL1 50µm  
...  
Boiko  
(Other) milk, dilution factor 1  
362·10<sup>3</sup> Cells per mL

Fast Autofocus

Wireless keyboard and mouse



Store unlimited number of records in the database  
Automatic software updates and Remote service

LACTOCHIP x4  
Low cost per analysis

LACTOCHIP x2  
High accuracy analysis

## SPECIFICATIONS

Analysis time: < 1 minute

Capacity: > 60 tests per hour

Measuring range: 10 000 to 10 000 000 cell/mL

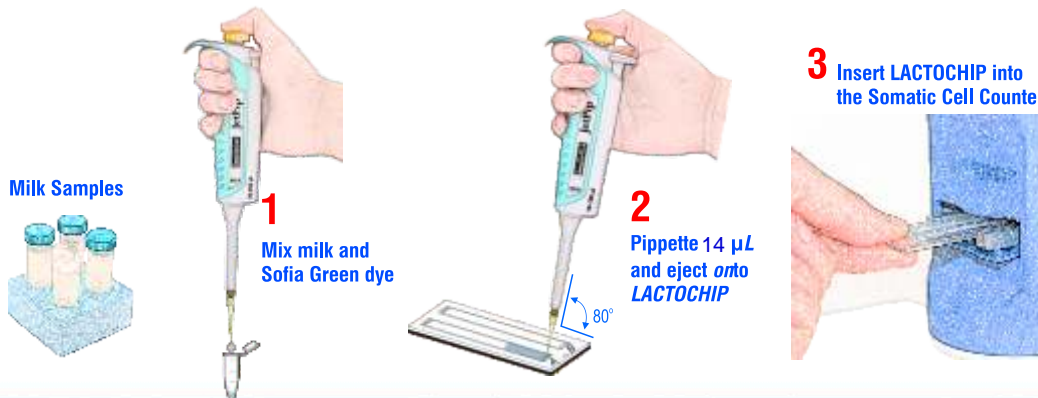
Deviation: SCC (cell/mL)	CV%
100 000	5%
400 000	3%
600 000	2%

Weight: 5.3 kg

## DEVIATION RANGE:

Number of cell/mL	* CV%
100 000	5%
400 000	3%
600 000	2%

## Accurate Somatic Cell Counting in three simple steps:



## KEY FEATURES:

- Simple in operation
- Fast somatic cell analysis
- Accurate and reliable results
- Portable and compact design
- Low maintenance cost
- One year full warranty

Results are color coded



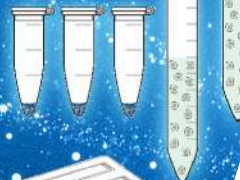
## LACTOSCAN SCC STARTER KIT



Calibration Sample  
1000x10<sup>3</sup> cell/mL

Calibration Sample  
300x10<sup>3</sup> cell/mL

SOFIA GREEN DYE



LACTOCHIP x4

LACTOCHIP x2

Clinical Mastitis > 400 000 cell/mL  
Subclinical Mastitis 200 000 ÷ 400 000 cell/mL  
Healthy < 200 000 cell/mL

The world's **LOWEST COST**  
per TEST of  
**SOMATIC CELL COUNTS**

This project is co-funded by the European Union



**Improve your herd's udder health**

**ENVIRONMENTAL CONDITIONS:**

Ambient temperature: 10 - 40 °C  
Milk temperature: 1- 40 °C  
Relative humidity: 30 - 80 %

**ELECTRICAL PARAMETERS:**

AC voltage: 220V/110V  
DC voltage: 14V  
Power Consumption: 30W max

**MECHANICAL PARAMETERS:**

Dimensions (W x D x H):  
390 x 300 x 260 mm  
Weight < 5.3 kg

Plastic cover box



MILKOTRONIC LTD

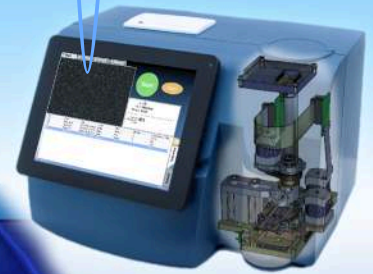
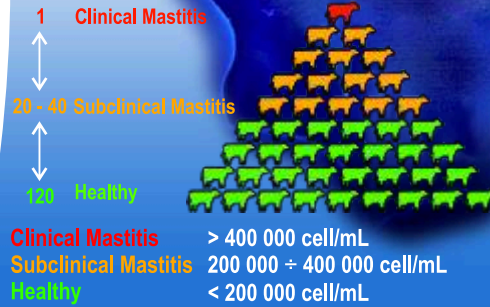
Bulgaria, 6000 Stara Zagora  
167, Tsar Simeon Veliki, A, 25  
Tel: + 359 457 670 82,  
Fax: + 359 457 670 83

Detects subclinical and clinical mastitis in single teat of the udder

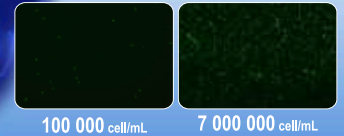


**CLINICAL MASTITIS**

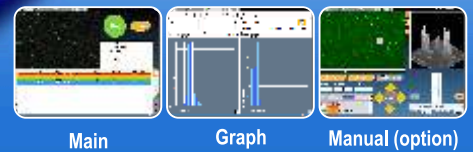
**SUBCLINICAL MASTITIS**



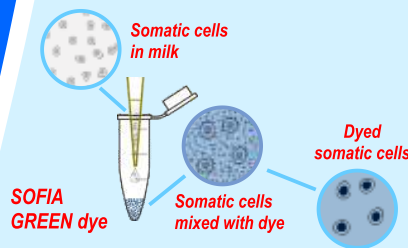
Somatic cell images



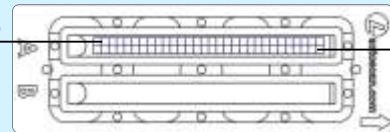
3 working modes



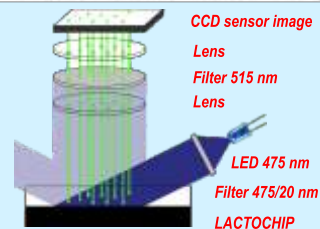
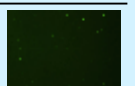
**The Principle of LACTOSCAN SCC**



First image



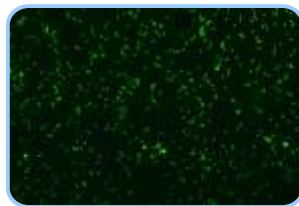
Last image



LACTOSCAN SCC takes a maximum of 60 images by computer controlled X:Y movements and then processes these by the image analysis software

**LACTOSCAN SCC**

Direct fluorescent, low magnification microscopic somatic cell counter

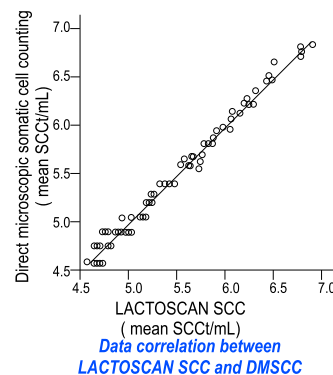
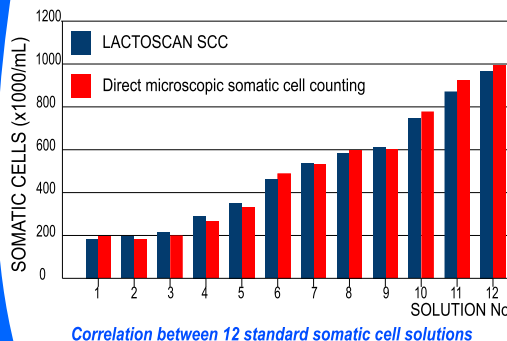
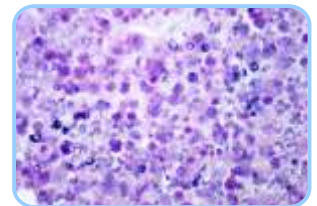


compare to

Image

**DMSCC**

Direct Microscopic Somatic Cell Counting



	LACTOSCAN SCC	DMSCC
SCC (cell/mL)	CV %	CV %
100 000	5 %	7 %
400 000	3 %	5 %
600 000	2 %	4 %

\* Coefficient of Variation  
Comparison of deviation

e-mail: salesdpt@lactoscan.com  
Eng, Spa, Port: +359 886 841 389  
e-mail: sales2@lactoscan.com  
Eng, Rus: +359 886 841 395  
e-mail: mainservice@lactoscan.com  
Eng, Rus: +359 888 811 017

e-mail: m.mihneva@lactoscan.com  
Eng: + 359 885 597 232  
e-mail: milkanalyzers@lactoscan.com  
Eng, Rus: +359 896 753 803

distributors: