

XploRA ONE

Trouble-free routine analysis with Raman Spectroscopy

Ideal for:

- QA/QC analysis
- Raw material validation
- Forensic routine analysis
- Pharmaceutical testing
- Routine inspection

The XploRA ONE will meet the demanding challenges of any **modern QA/QC and analytical laboratory with simplicity, exceptional sensitivity and reliability.**

Like the larger XploRA multiline systems, the XploRA ONE offers full confocal Raman microscopy, full spectral analysis in "one-shot", sensitivity and optical microscopy in one instrument. It has a **simplified and easy to use configuration and interface** so you can focus on the sample measurements and routine analysis that you need, obtaining results, not just spectra.

Why not speak to one of our Raman specialists today to see how HORIBA can assist you with your analysis requirements.

Contact us at:

info.sci@horiba.com

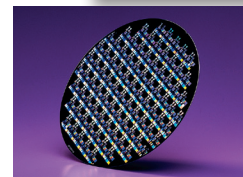


Raman Data in Seconds: For Industrial Quality Control and Analytical Testing

The XploRA ONE confocal Raman microscope offers simple operation, speed, low maintenance and “push button” analytical results - enabling you to optimise productivity and efficiency.

XploRA ONE is a cost-effective solution without the compromise.

- Non-destructive testing and analysis
- No sample preparation
- Ideal for chemical analysis and identification
- Spectral databases – for simple interpretation of results
- Auto-calibration and validation software– ensures accuracy of data
- Automate your Raman analysis – with user defined measurement methods
- Affordable entry into full confocal performance – with 1 µm XY resolution
- Upgradeable to confocal Raman imaging
- 532nm or 785nm high brightness CLS lasers for optimal results
- Higher sensitivity for speed and improved limits of detection



From polymers to nanomaterials, pharmaceuticals to semiconductors, electronics to chemical feedstuffs, the XploRA ONE is simply focused to your analytical needs.

Multivariate analysis module*
for quantitative analysis

ParticleFinder module* for automated
particle location and analysis

Versatile reporting templates to enable
hardcopy spectra for data export

Sample	1000-2000	Date	10/20/2012 10:00
Substance	1000-2000	Operator	USER
Level	750cm	Operator Level	Operator
Excitation	632.8nm	Calibration Date	11/02/2012 10:00
Sample Volume	2.0µl	Operator Name	Yvon

* Requires add-on module for LabSpec 6 software

info.sci@horiba.com
www.horiba.com/xplora-one

HORIBA
Scientific

USA: +1 732 494 8660
UK: +44 (0)20 8204 8142
China: +86 (0)21 6289 6060

France: +33 (0)1 69 74 72 00
Italy: +39 0 2 5760 3050
Brazil: +55 11 5545 1500

Germany: +49 (0)89 4623 17-0
Japan: +81 (0)3 6206 4721
Other: +33 (0)1 69 74 72 00

