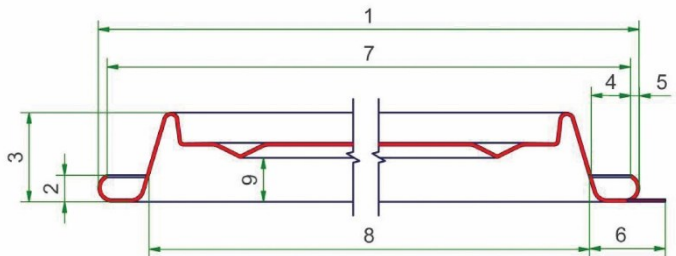


EMS-3200 End Measurement Gauge

The Semi-Automated, multi-diameter End Measurement Gauge provides automatic measurements for every characteristic of the can end.

Results are shown on the color touch screen display and may be saved or transferred either directly into Visionary QC™ or other plant wide data acquisition software.

Measures: Curl Diameter (1), Curl Height (2), Countersink Height (3), Curl Opening (4), Curl Width, (5), Curl Length (6), Inside Curl Diameter (7), Chuck Fit (8), and the option of First Bead Height (9)



Benefits

- Saves time:
 - Automatic end rotation
 - Automatic data transfer
 - Multiple measurements at one time
- Increased accuracy:
 - Automated measurement
 - World class R&R
- No change parts or adjustment necessary

Features

- Pictorial representation of end measurements shown on screen
- Customizable test types including number of measurements per end and characteristics to be measured
- Easy to use calibration/verification mode (with calibration piece)

WWW.CMC-KUHNKE.COM

GERMANY
CMC-KUHNKE GmbH
Colditzstrasse 34-36
12099 Berlin
Tel. +49 30 230066-0
sales@cmc-kuhnke.de

UNITED STATES
CMC-KUHNKE, Inc.
1060 Broadway
Albany, NY 12204
Tel. +1 518-694-3310
sales@cmc-kuhnke.com

MEXICO
CMC-KUHNKE Américas
Av. Ermita Iztapalapa #334
C.P.09080 CDMX
Tel. +52-55-1209-1046
sales@cmc-kuhnke.com.mx

CHINA
CMC-KUHNKE Precision Gauges Co.
No.A404, Shengzhou Road 885,
HuangPu District, Guangzhou (510663)
Tel. +86 20-3929-2287
infochina@cmc-kuhnke.com

Technical Details

Maximum Size:	230 mm (900)
Minimum Size:	50 mm (200)
Max Positions:	20 positions around the end (end rotated automatically)
Electrical Required:	100-240VAC 50-60Hz
Air Pressure Required:	6 bar (90 psi)
Measurement Units:	Inch, mm
Output Interface:	RS232
Languages:	English, French, German
Dimensions:	59 x 52 x 25 cm (23 in x 20 in x 10 in)
Resolution:	0.001 mm (0.00004 in)

WWW.CMC-KUHNKE.COM

GERMANY
CMC-KUHNKE GmbH
Colditzstrasse 34-36
12099 Berlin
Tel. +49 30 230066-0
sales@cmc-kuhnke.de

UNITED STATES
CMC-KUHNKE, Inc.
1060 Broadway
Albany, NY 12204
Tel. +1 518-694-3310
sales@cmc-kuhnke.com

MEXICO
CMC-KUHNKE Américas
Av. Ermita Iztapalapa #334
C.P.09080 CDMX
Tel. +52-55-1209-1046
sales@cmc-kuhnke.com.mx

CHINA
CMC-KUHNKE Precision Gauges Co.
No.A404, Shengzhou Road 885,
HuangPu District, Guangzhou (510663)
Tel. +86 20-3929-2287
infochina@cmc-kuhnke.com