

**520nm~525nm 2W Fiber Coupled Laser Diode (LD) Module with HHL Package | 520nm Green Laser Module**
**520nm | 2W Output Power| HHL Package With 105um Multi-mode Fiber| Built-in TEC Cooler Optional**
**WSLX-520-002-105M-H**
**Wavespectrum Laser Group**
**www.wavespectrum-laser.com**

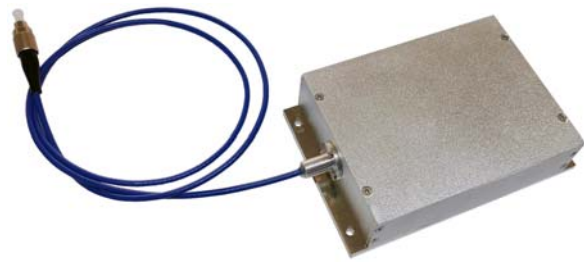
PARAMETER	SYMBOL	VALUE	UNIT
MAX Reverse Current	$V_r$	80	mA
Operating Temperature	$T_{op}$	0~+60	°C
Storage Temperature	$T_{stg}$	-40~+85	°C
Lead soldering temperature (10 sec.)	$T_{is}$	260	°C

**Features:**

- 520nm
- 2W Output Power
- Built-in TEC Cooler Optional
- Built-in Photodiode Optional
- Stainless Steel Armor Optional

**Applications:**

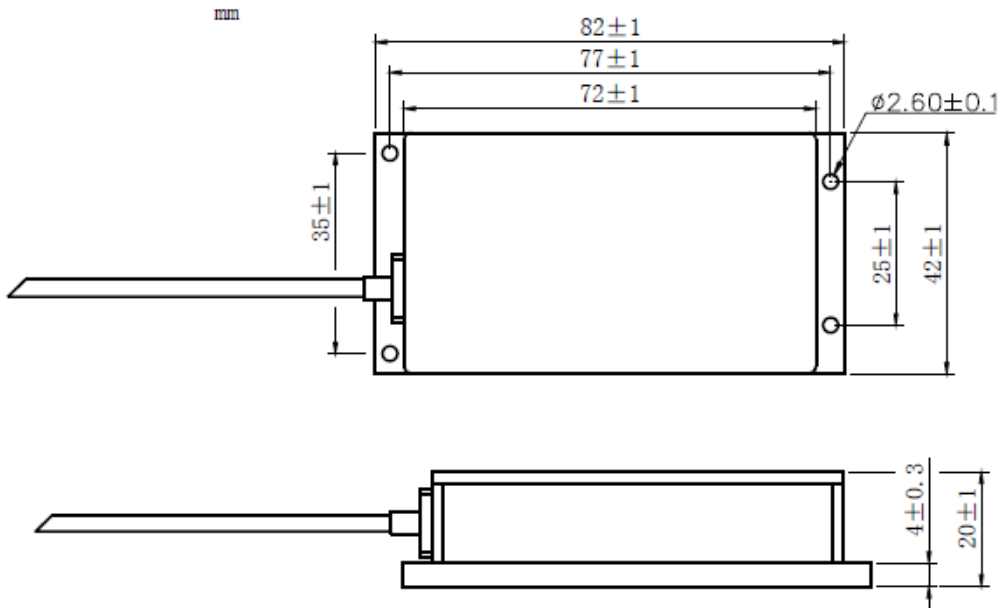
- Medical Laser Treatment
- Laser Show
- Others


**Specifications**
**WSLX-520-002-105M-H**

	Min.	Type	Max.
Center Wavelength@25°C	510nm	520nm	535nm
Spectral Width (FWHM)	----	6nm	----
Output Power	----	2W	----
Temperature Coefficient of Wavelength	----	0.3nm / °C	----
Threshold Current (Typ.)	----	0.2A	0.5A
Operating Current (Typ.)	----	1.6A	1.8A
Operating Voltage	----	20V	24V
Fiber Core Diameter	105um		
Fiber Numerical Aperture	0.22		
Fiber Length	>80cm		
Connector Type	SMA905/ST/FC		
Package	P4 Package		



## P4 Package View



Wavespectrum offer **Customized** 520nm Fiber Coupled LD.

Please let me know your special request:

- Customized Output Power
- Customized Fiber
- Customized Fiber Connector

Contact us with [info@wavespectrum-laser.com](mailto:info@wavespectrum-laser.com)

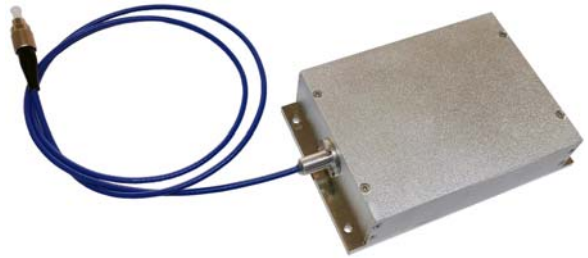
Electrically shorten LD module and store in non-extreme conditions.

Suggest using the constant current power supply.



**520nm~525nm 5W Fiber Coupled Laser Diode (LD) Module with HHL Package | 520nm Green Laser Module  
 520nm | 5W Output Power| HHL Package With Single 400um Multi-mode Fiber| Built-in TEC Cooler Optional  
 WSLX-520-005-400M-H Wavespectrum Laser Group www.wavespectrum-laser.com**

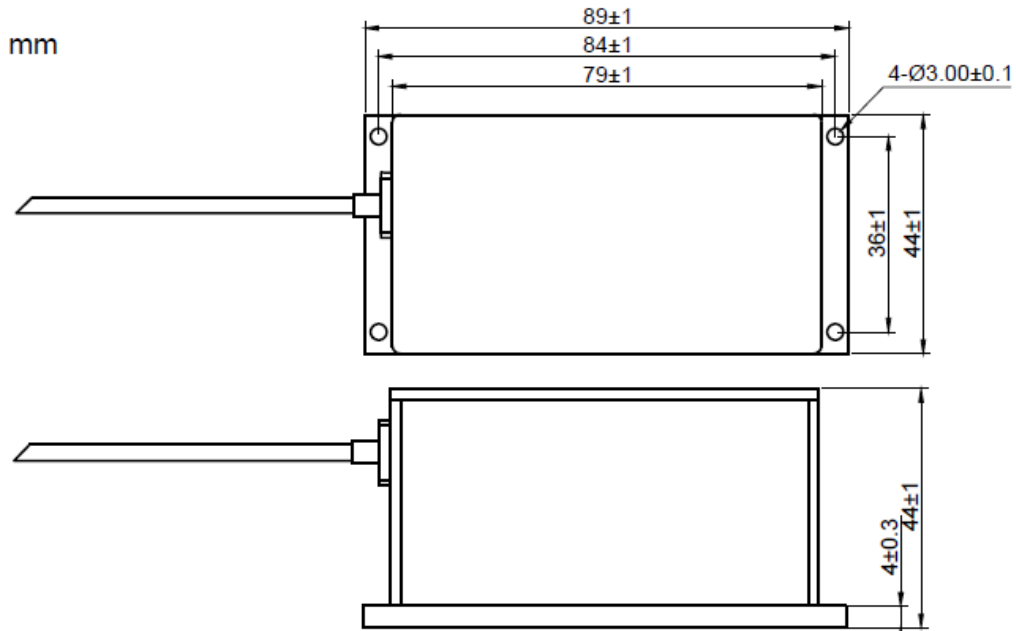
PARAMETER	SYMBOL	VALUE	UNIT
MAX Reverse Current	$V_r$	80	mA
Operating Temperature	$T_{op}$	0~+60	°C
Storage Temperature	$T_{stg}$	-40~+85	°C
Lead soldering temperature (10 sec.)	$T_{is}$	260	°C

<b>Features:</b> <ul style="list-style-type: none"> <li>● 520nm</li> <li>● 5W Output Power</li> <li>● Built-in TEC Cooler Optional</li> <li>● Built-in Photodiode Optional</li> <li>● Stainless Steel Armor Optional</li> </ul>	
<b>Applications:</b> <ul style="list-style-type: none"> <li>● Medical Laser Treatment</li> <li>● Laser Show</li> <li>● Others</li> </ul>	

Specifications	WSLX-520-005-400M-H		
	Min.	Type	Max.
Center Wavelength@25°C	510nm	520nm	535nm
Spectral Width (FWHM)	----	8nm	----
Output Power	----	5W	----
Temperature Coefficient of Wavelength	----	0.3nm / °C	----
Threshold Current (Typ.)	----	0.2A	0.5A
Operating Current (Typ.)	----	1.6A	1.8A
Operating Voltage	----	40V	48V
Fiber Core Diameter	400um		
Fiber Numerical Aperture	0.22		
Fiber Length	>80cm		
Connector Type	SMA905/ST/FC		
Package	P5 Package		



## P5 Package View



Wavespectrum offer **Customized** 520nm Fiber Coupled LD.

Please let me know your special request:

- Customized Output Power
- Customized Fiber
- Customized Fiber Connector

Contact us with [info@wavespectrum-laser.com](mailto:info@wavespectrum-laser.com)

Electrically shorten LD module and store in non-extreme conditions.

Suggest using the constant current power supply.

