

## 超微粉气流粉碎机

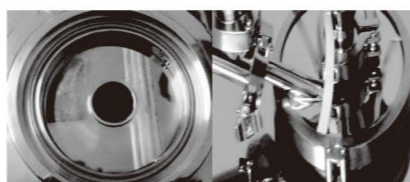
THE MICRON JETMILL

### 产品优势 Product Advantage



- ▶ 从实验型到生产型机器，工艺参数可等比例放大；  
From the experimental type to the production machine, the process parameters can be proportionally enlarged;

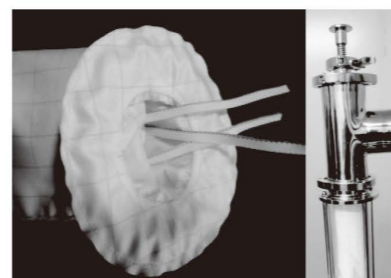
- ▶ 特殊的粉碎腔（德国进口）与进料管角度设计，保证产品一次流程粉碎可获得很好的粒度分布；  
Special crushing chamber (Germany Imported) and feeding pipe were designed in angle shape, ensure to achieve the perfect particle in one pass.;



- ▶ 样品与设备接触面积小，可以获得很高的得率；  
The contact area between the sample and the device is small, and the high collection rate can be obtained;



- ▶ 多鞘型滤袋粉末捕集系统，防静电的聚酯材料过滤袋（瑞士进口），手动或气动抖袋系统；  
Multi sheath bag filter system, antistatic polyester filter bag (Switzerland), manual or pneumatic shake bag system;



- ▶ 气动控制系统（意大利进口），主机无需任何电源供应，满足防爆要求。  
Pneumatic control system (Italy), the main engine without any electricity supply to meet the explosion-proof requirements.



实验型超微粉气流粉碎机 Experimental Micron Jetmill

### Micron Jet Mill Lab

处 理 量 Batch Capacity	1-50g/hr
气源消耗量 Gas Consumption	0.10 Nm <sup>3</sup> /分钟 @ 压力 7 Bars 0.10Nm <sup>3</sup> /Min@ 7Bars 0.21 Nm <sup>3</sup> /分钟 @ 压力 12 Bars 0.21Nm <sup>3</sup> /Min@ 12bars
工作压力 Pressure	0~12 Bar
粉碎腔直径 Crushing Chamber Diameter	1"
喷嘴数量 Nozzle Quantity	4pc
气体要求 Gas Requirements	无油 ( No Oil )
进料粒径 Feed Particle Diameter	< 1 mm
最大压力 Maximum Pressure	18 Bar
工作温度 Operating Temperature	0~50°C
尺 寸 Dimensions	455mm x 340mm x 715mm