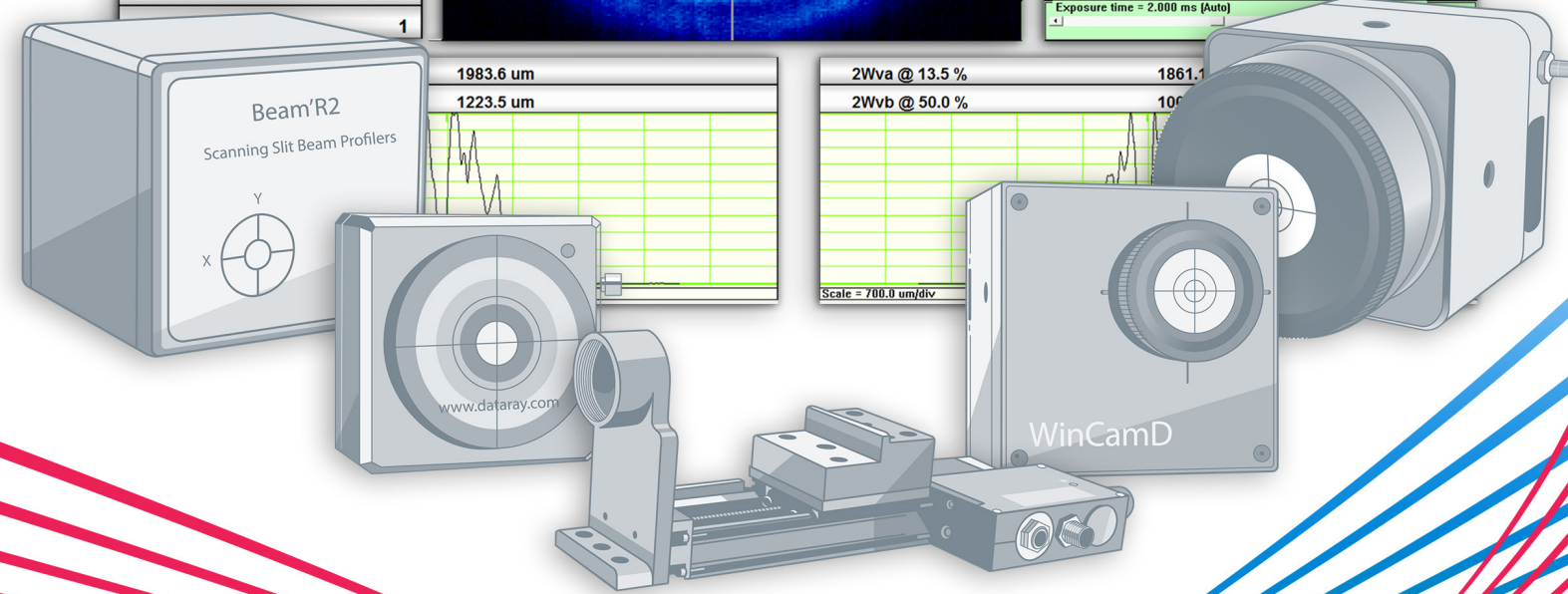
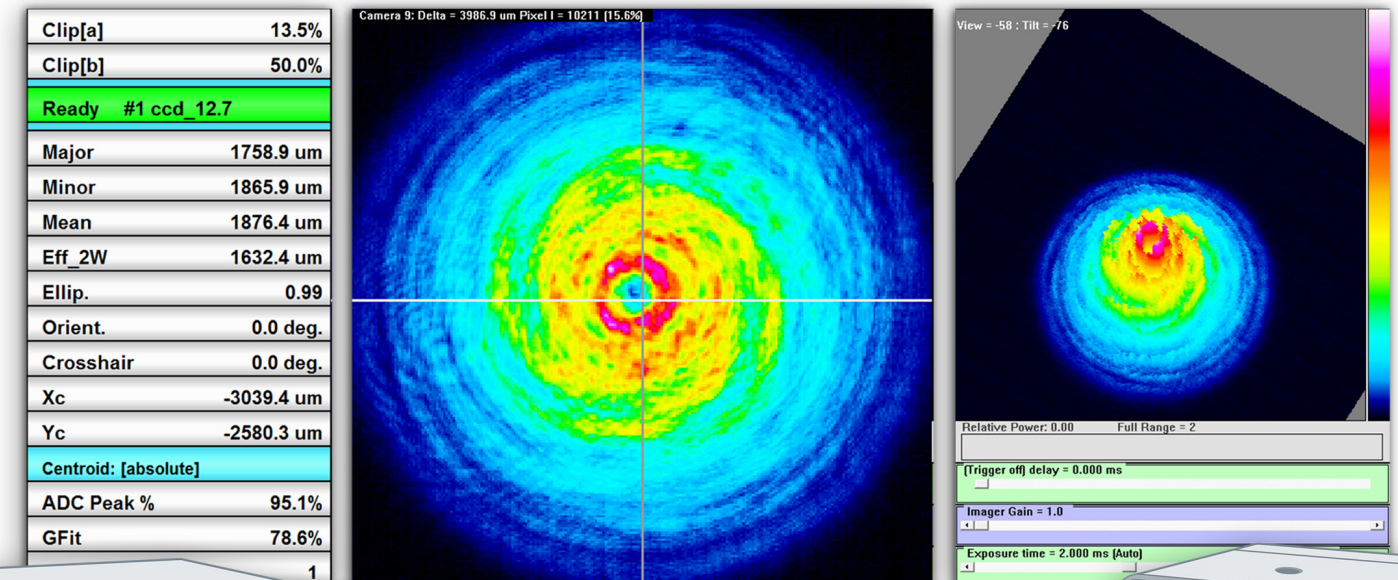


# SCANNING SLIT



## BEAM PROFILING SELECTION GUIDE

	Beam'R2	BeamMap2
Key Features	Integrated X and Y profiles	Real-time XYZ $\theta\Phi$ measurement and focus finding Real-time pointing, divergence, and M <sup>2</sup> measurements
Interface	USB 2.0 Port-powered	
CW or Pulsed?	CW, Pulsed Minimum PRR (Si detector) $\approx$ [500/(Beam diameter in $\mu\text{m}$ )] kHz	
Wavelengths	Si: InGaAs: Si + InGaAs: Si + InGaAs, extended:	190 - 1150 nm 650 - 1800 nm 190 - 1800 nm 190 - 2500 nm
X-Y-Z Profiles, plus $\Theta$ - $\Phi$	N/A	Yes, unique patented capability
Best Resolution	0.1 $\mu\text{m}$	
Smallest Beam	2 $\mu\text{m}$ (Knife Edge mode)	
Largest Beam	See limits below this table	
Update Rate	5 Hz real-time (adjustable 2-10 Hz)	
M <sup>2</sup> Measurement	Yes - with M2DU-BR accessory	Yes - real-time
Locate Focus	Yes - with M2DU-BR accessory	Yes - real-time
Pointing/Divergence	Yes - with M2DU-BR accessory	Yes - real-time
Switched Gain (Opt. dB)	32 dB	



Maximum Beam Size. Dimensions in mm.

- 4 Si Detector
- 3 InGaAs
- 2 Extended InGaAs