



GX-241 LIQUID HANDLER

GX-241

Liquid Handler

Powerful. Small.

INCREASE FLEXIBILITY

REDUCE LAB SPACE

PERFORM A MULTITUDE
OF LIQUID HANDLING TASKS





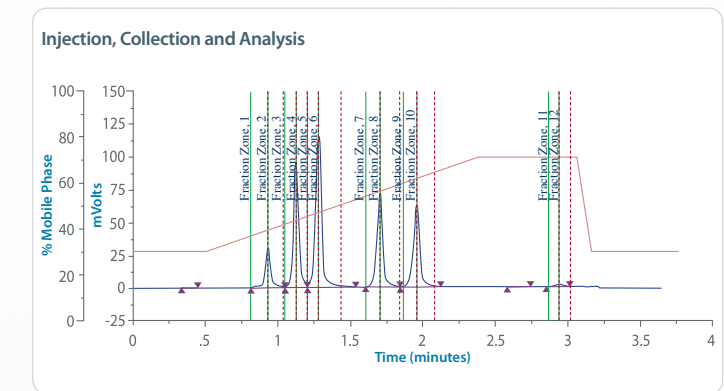
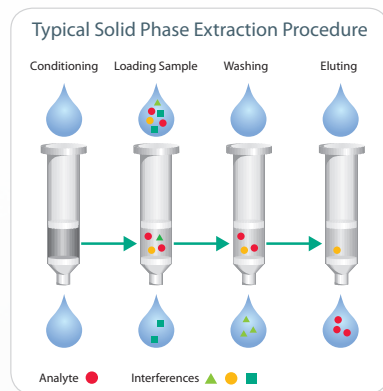
Less is more.

Liquid handling, solid phase extraction and purification are essential to sample preparation and laboratory operations. As labs come under growing pressure to run more samples in the same space, the value of bench space has increased — and so has the need for a compact instrument that can dispense and dilute, extract and elute, or inject and collect.



You are in control with TRILUTION®

TRILUTION LH is a comprehensive software package for seamless automation of all Liquid Handling and Solid Phase Extraction methods. Combining unmatched flexibility with an intuitive interface, a full set of ready-to-use tasks and a variety of scheduling options, TRILUTION LH will have your samples running smoothly and efficiently from day one.



Liquid Handling

The GX-241 performs the duties of many instruments in less space than one and offers the most popular features of larger liquid handlers in an easy-to-use, single-probe configuration.

- Dispense 0.1 - 10 mL with syringe pump.
- Highly accurate and reproducible ± 2%.
- Works with a variety of tubes and microplates.
- Jet-wash rinse prevents cross-contamination.

Bed Capacity 2 Racks

| Tube Diameter | GX-241 Capacity |
|---------------|-----------------|
| 10 mm | 216 |
| 13 mm | 120 |
| 16 mm | 44 |
| 17 mm | 44 |
| 18 mm | 44 |
| 28 mm | 28 |



Adding a Valvamate actuator provides access to multiple off-bed reagents

Solid Phase Extraction

Some systems do only SPE and others do only liquid handling but don't you usually do both?

Building on Gilson's decades-long leadership in SPE with Mobile Rack and Positive Pressure technology, the GX-241 is the most compact combination of SPE integrated with liquid handling available.



- Constant speed and very reproducible recoveries.
- Works with a variety of vials and test tube sizes.
- Accommodates 1, 3 or 6 mL disposable cartridges.
- On-bed reservoirs put six solvents within easy reach.

Auto-Sampler

Is there a compact auto-sampler that can inject samples onto any HPLC system and deliver liquids for flow injection analysis?

With two sample racks and two ports specifically designed to interface with spectrophotometers or other detectors, the GX-241 with Direct Inject capability is ideal for flow injection analysis.

- Dual transfer ports for off-bed detection devices.
- Direct connection to valve reduces dead volume.
- Ports available in either PEEK or stainless steel.



HPLC Fraction Collection

Looking for a simpler, smaller HPLC system or lacking the space or sample load to justify a large purification platform?

When combined with Gilson's preparative HPLC systems, the GX-241 provides a compact purification platform with the features and performance of larger bench systems.

- Accommodates a variety of fraction collection tubes.
- Loop sizes range from 2 mL to 10 mL.
- Large collection capabilities of up to 200 mL/min.
- Separated fluid paths between injection and fraction collection prevent contamination for small volumes.



Specifications

Technical Specifications - GX-241 Liquid Handler

| Technical Specifications | Definition |
|---|--|
| Sampler Type | Small Footprint X/Y/Z with stationary rack design |
| Probe Positioning Performance | Accuracy: ± 0.75 mm in X/Y/Z dimensions Repeatability: ± 0.20 mm in X/Y/Z dimensions |
| Arm Speed | 0-350 mm/sec (300 mm/sec default) in X and Y dimensions 0-150 mm/sec (125 mm/sec default) in Z dimension |
| Horizontal Motion Strength | 0.3 kg (0.7 lbs) |
| Vertical Punch Strength | 1.8 kg (4 lbs) |
| Probe Rinse | Probe rinsing occurs through a dedicated rinse station with static and flowing rinse capabilities |
| Number of Racks | Two Code 33X-series (short) or Code 34X-series (short) or one of each |
| Front Panel | Two digit display and indicator lights for Power and Error |
| Contact Control | Four inputs (contact closure, TTL), two relay outputs, and two switched +24V DC 1A outputs Switching voltages higher than 30V or greater than 1 Amp of current may damage the instrument |
| Communication | Ethernet |
| Software Control | Computer control via Ethernet and TRILUTION® LH Software |
| Environmental Conditions | Indoor Use Only Altitude: Up to 2000m Temperature range: 5° - 40°C Humidity: Maximum relative humidity 80% for temperatures up to 31°C, decreasing linearly to 50% relative humidity at 40°C |
| Safety and Compliance | The liquid handler has been certified to safety standards required in Canada (UL), Europe, and the United States (CE & RoHS). Refer to the instrument rear panel label and the Declaration of Conformity document for the current standards to which the instrument has been tested. |
| Power Requirements | GX-241 Liquid Handler Voltage: 24V DC Current rating: 2.0A Power Supply Voltage: 24V DC Current rating: 6.25 Amp, 150 Watts |
| Dimensions* (W x D x H) *with Z-Arm installed and connected | 39 x 50 x 47 cm (15.4 x 19.8 x 18.5 in) |
| Weight* *with Z-Arm installed | 7.7 kg (17 lbs) |

