

New Product

e-Trap *Plus* - Cold Trap for GC Applications

Date: February 2014

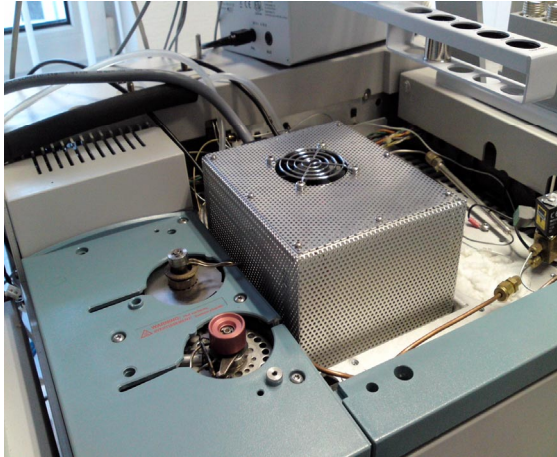
Introduction: "e-Trap Plus" Cold Trap Option for GC systems

- Electrical Peltier driven , 2-stage Cold Trap.
- Mounted outside of gc oven.
- Inclusive *e-Trap Control* and *IceStar Universal Liquid Cooler*.
- Temperature controlled by CTC - Combi Pal.
- Temperatur range: -40°C to 300°C for the eTrapPlus (includes IceStar); from -10°C to 300°C for the standard eTrap version
- Heating rate: ca. $1000^{\circ}/\text{min}$
- Optimized for splitless (multiple) Headspace- and SPDE/SPME- Injection, as well as Thermodesorption.
- e-Trap capillaries available with different adsorbenses (Tenax, etc.).
- Currently available for Agilent 6890/7890/7820 GC. Different GC types/brands on request. Two versions available: eTrap Plus (includes IceStar) and eTrap.

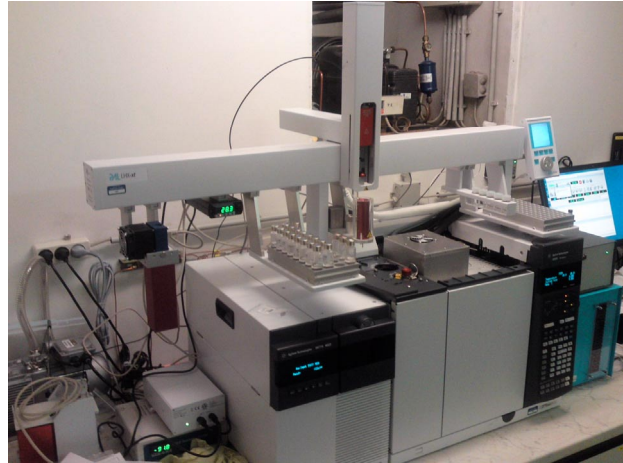


Advantages:

- In future, upgrades will be available for most of the common GC types/brands.
- No liquid N₂ or CO₂ required!



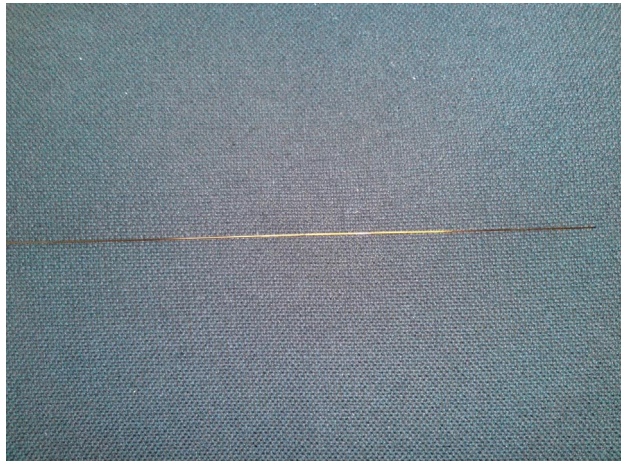
e-Trap* in Agilent 6890 GC



e-Trap* in Agilent 7890 GC, 5977 MSD, LHX Pal



Heat/Cool Tube with e-Trap capillary



e-Trap capillary, packed with adsorbents

*The pictures show a preliminary model of the e-Trap.

CHROMTECH