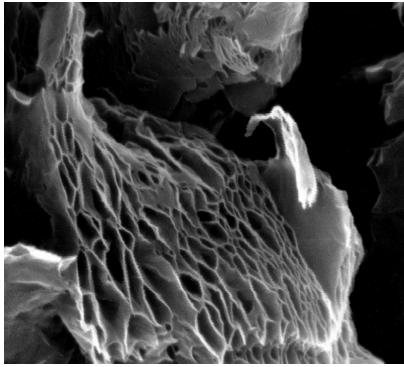
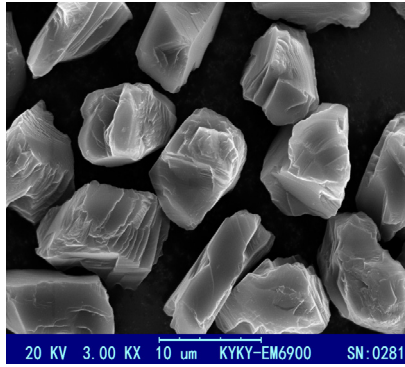


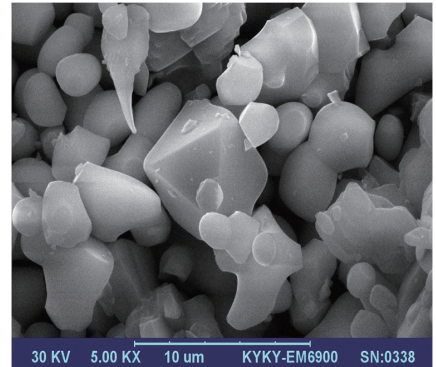
测样图片 Gallery



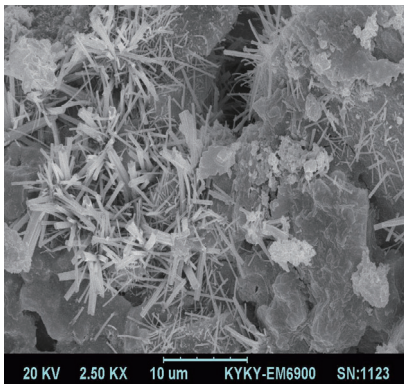
天然石墨 Natural Graphite



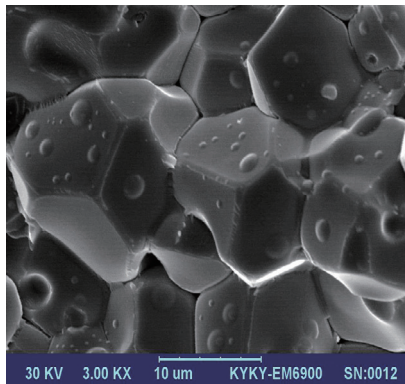
金刚石粉末 Dimond Powder



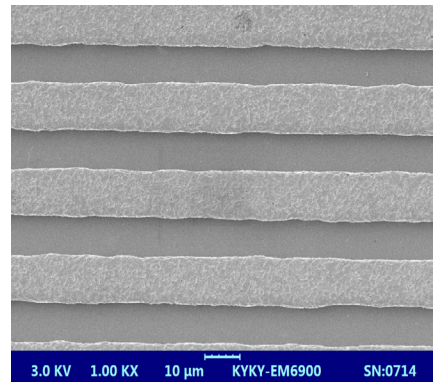
稀土 Tombarthite



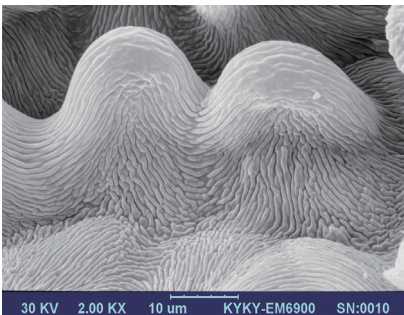
混凝土 Concrete



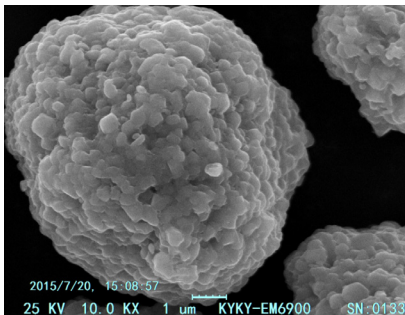
金属断口 Metal Fracture



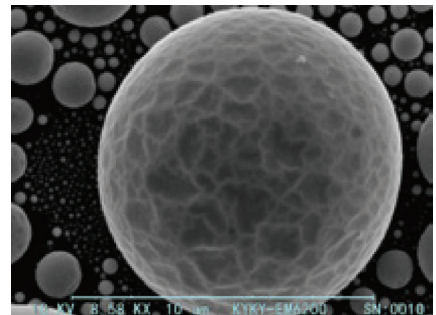
柔性 PCB



高原种子 Seed



三元材料 Ternary Materials



球状锡粉 Tin Powder

KYKY 北京中科科仪股份有限公司
KYKY TECHNOLOGY CO., LTD.



地址: 北京市海淀区中关村北二条13号 邮编: 100190

电话: 010-62571593

24小时咨询热线: 0086-18611817232

24 Hours Contacts: 0086-18611455343

传真: 010-62555306

网址: www.kykysem.com.cn www.kyky.com.cn

邮箱: kx-sem@kyky.com.cn

KYKY
中科科仪

中科科仪产品系列之

扫描电子显微镜



KYKYSEM 助您探索无限微观世界！

北京中科科仪股份有限公司
KYKY TECHNOLOGY CO.,LTD

EM6900 高分辨率钨灯丝扫描电子显微镜

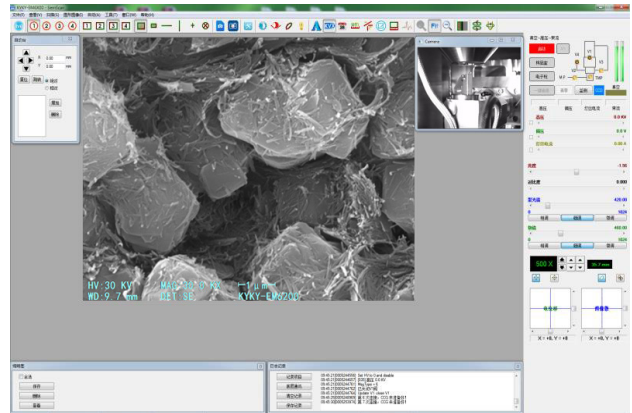
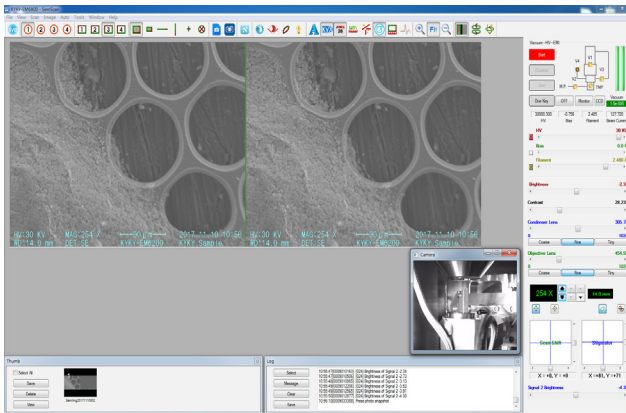
分辨率/Resolution	3nm@30kV(SE) 6nm@30kV(BSE)	3nm@30kV(SE) 6nm@30kV(BSE)	
放大倍数/Magnification	6X ~ 300000X (底片放大) 12X ~ 600000X (屏幕放大)	6X ~ 300000X (Negative Magnification) 12X ~ 600000X (Screen Magnification)	
灯丝/Filament Type	预对中钨灯丝	Pre-Centered Tungsten Filament Cartridge	
加速电压/Accelerating Voltage	0 ~ 30kV	0 ~ 30kV	
特点/Feature	分辨率高, 操作简便, 兼容超大样品仓, 可改造性能优越。	High Resolution , Easy Operation , Automatic Control System , Optional Specimen Chamber And Modification Upgrade.	
真空系统/Vacuum System	涡轮分子泵, 机械泵	Turbo Molecular Pump, Mechanical Pump	
探测器/Detector	高真空二次电子探测器 (具备保护探测器探头不被碰撞的功能) 半导体四分割背散射电子探头	High vacuum secondary electron detector(with detector protection) Semiconductor four segmentation back scattering detector	
样品台/Specimen Stage	五轴样品台	Five axes stage	
行程/Travel Range	X (Auto)	0 ~ 80mm	0 ~ 80mm
	Y (Auto)	0 ~ 60mm	0 ~ 60mm
	Z (Manual)	0 ~ 50mm	0 ~ 50mm
	R (Manual)	360 °	360 °
	T (Manual)	-5 ° ~ 90 °	-5 ° ~ 90 °
最大样品直径/Max Specimen Diameter	175mm	175mm	
工作距离/Working Distance	5 ~ 50mm	5 ~ 50mm	
可选附件/Accessories	舱内摄像头, 六硼化镧灯丝, 能谱仪, 阴极荧光探头, 波谱仪, 溅射仪, 镀膜机等	CCD, LaB ₆ Filament, X-Ray Detector(EDS), EBSD, CL, WDS, Coating Machine etc	
非标定制/Modification	电子束曝光系统, 高低温拉伸台机械手联用, 与激光联用, 与STM, AFM联用, 镀膜机联用, 电子束焊机图像等	EBL; STM; AFM; Heating Stage; Cryo Stage; Tensile Stage; Micro-nano Manipulator; SEM+Coating Machine; SEM+Laser etc	
电脑/PC	戴尔定制工作站系统	Dell Customized Workstation	

软件介绍 Software Introduction

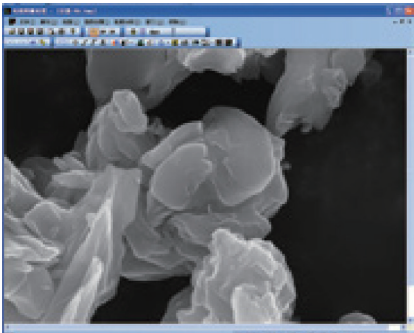
KYKY-SEM电镜操作软件纯中文/英文 可切换操作界面，模块化布局。在满足基本电镜的操作功能外还具有一键看像，EM6000系列软件支持实时3图像同时显示，2通道外加CCD窗口，支持二次电子像与背散射像合成，多点尺寸测量，电镜图片文字标注，真空图显示，CCD窗口显示等强大的辅助功能，满足不同用户的个性化需求。

自动功能：聚焦，亮度/对比度调节，消像散，电子束对中，电子枪自动校正，故障检测，一键看像,选配3D重构等。

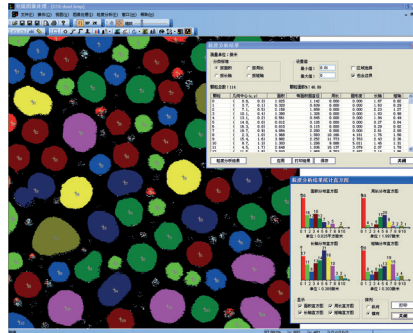
可保存图片：4096 x 4096 Pixel BMP,GIF,TIF,JPG,MNG,ICO CUR,TGA,PCX,JP2,JPC,PGX,RAS,PNM,SKA,SEMEM).ICO CUR,TGA,PCX,JP2,JPC,PGX,RAS,PNM,SKA,SEM.



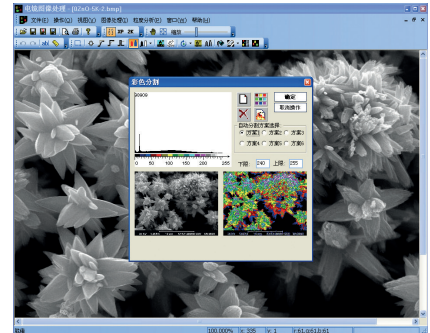
图像处理软件 Image Processing Software



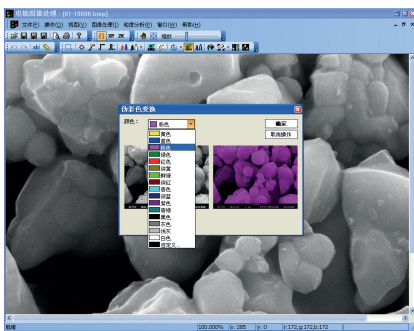
操作界面 Operation Interface



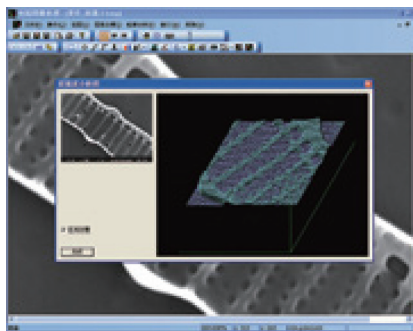
粒度分析 Grain Size Analysis



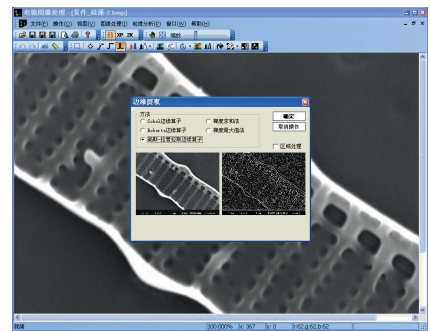
彩色分割 Color Segmentation



伪彩变换 Pseudo-color Transform



面强度分析 Surface Intensity Analysis



边缘提取 Edge Extraction