

## Diode pumped pulsed Nd:YAG laser



### MAIN FEATURES

- REPETITION RATES UP TO 200 Hz
- DIODE WARRANTY: 2 BILLION SHOTS
- QUICK AND EASY ACCESS TO 1064, 532, 355 & 266 nm
- PLUG AND PLAY HARMONICS WITH AUTOMATIC PHASE-MATCHING
- QUICK-CONNECT CABLES AND COOLING LINES
- LIGHTWEIGHT AND COMPACT DESIGN
- SINGLE LONGITUDINAL MODE OPTION AVAILABLE
- NO INSTALLATION REQUIRED

### MAIN APPLICATIONS

- LASER PEENING ■ LIDAR ■ PLD ■ MATERIAL PROCESSING
- OPO PUMPING ■ PHOTOACOUSTIC IMAGING ■ Ti:Sa PUMPING
- ABLATION ■ SPECTROSCOPY ■ LIF ■ LASER ULTRASOUND

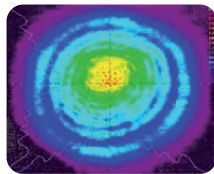
### SPECIFICATIONS

		QS DPSS 7-100	QS DPSS 7-200	QS DPSS 9-100
Repetition rate <sup>(1)</sup> (Hz)		100	200	100
Energy per pulse (mJ)	1064 nm	300	200	650
	532 nm	160	95	360
Pulse to pulse stability % (rms%)	355 nm	90	60	200
	1064 nm	<±2 (0.6)		
Divergence (mrad)	1064 nm	<1 <sup>(2)</sup>		
Pulse duration (ns)	1064 nm	5-9 ns		
Polarization	1064 nm	Vertical		
Polarization ratio	1064 nm	>95%		>90%
Cooling		water to water, chiller as option		
Dimensions in mm [inches]	laser head	147x526x125 [5.8x20.7x4.9]		
(HxLxW)	harmonic modules	99x143x125 [3.9x5.6x4.9]		
Weight in kg [lbs.]	laser head	<8 [15.4]		
	harmonic modules	<4 [8.8]		

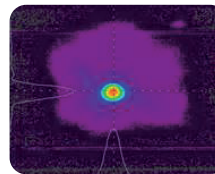
<sup>(1)</sup> Other repetition rates on request

<sup>(2)</sup> Multimode version for flat top spatial profiles on request

### TYPICAL BEAM PROFILES



Near Field beam profile  
650 mJ @1064 nm, 100 Hz



Far Field beam profile  
650 mJ @1064 nm, 100 Hz

# Q-smart



Many options and configurations are available. Please contact Quantel to find the best match for your needs and compatibility between options.

quantel@quantel-laser.com  
www.quantel-laser.com

**Quantel - France**  
2 bis, avenue du Pacifique  
Z.A. de Courtabœuf - BP 23  
91941 Les Ulis Cedex - France  
Tel. +33 (0)1 69 29 17 00

**Quantel - USA**  
49 Willow Peak Drive  
Bozeman, MT 59718 - USA  
Tel. +1 406 586 0131 / 1 877 QUANTEL

**Quantel - GmbH**  
Worringer Str. 30  
50668 Köln - Germany  
Tel. +49 (0) 221 / 677856750

