

CIGARETTE SMOKE GENERATOR Model SG-300

CIGARETTE SMOKE GENERATOR MODEL SG-300

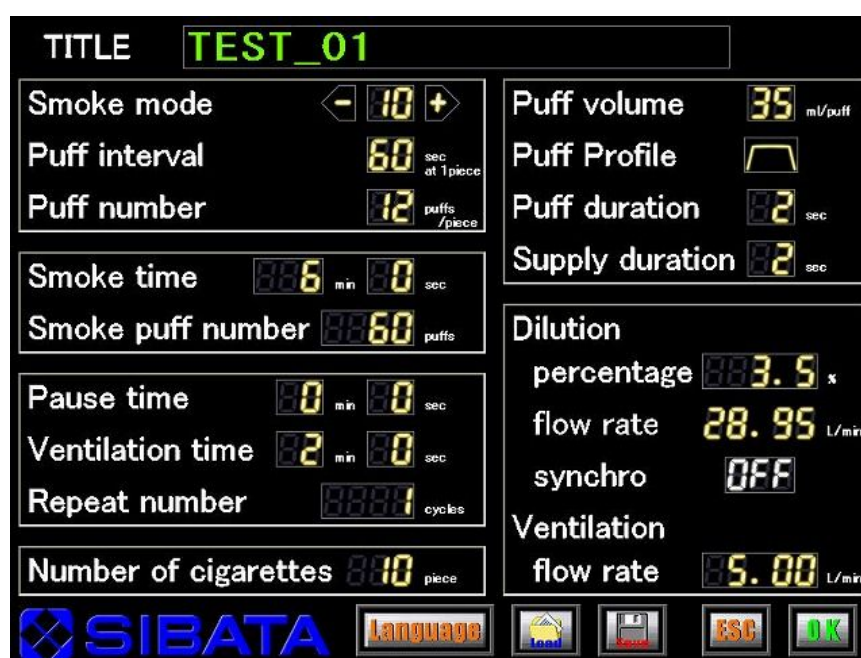


The SG-300 is the new Cigarette smoking machine for In vivo and vitro studies. Same as the earlier model, SG-200, the syringe for inhaling the main stream smoke is easily taken off and disposable which saves you time for washing. You have easy access to the valves and parts that you will have to take off for washing, which is the part you always wished you didn't have to do.

All controls can be done from the touch panel and testing protocols can be memorized for reproducible testing. A built-in dilution system using compressed air will quickly deliver the smoke to the exposure chamber.



Main screen



Setup screen

◆ Specifications

Type	SG-300
Smoking method	Inhaled(2sec)& pushed inline(3sec) by syringe
Puff volume	Adjustable at 15-55 mL/min
Puff profile	Able to set trapezoid shape or ISO sign curve
Dilution	3-50 %
Smoking speed	1-10 puffs/min
Smoking time	Set by smoking time or quantity of puff
Settable quantity	10 cigarettes (flat turn table)
Cigarette holder	Labyrinth seal
Control	LCD touch panel
Dimensions	900(W) × 500(D) × 600 (H) 66kg
Power source	AC 220V ± 10%

◆ Applications

- Inhalation exposure test
- In vitro exposure test
- Analytical test for cigarette smoke



Autofeeder for Cigarette

•Prices, specifications and external appearances published in the catalog are from December of 2003. •Improvements made to the product will change specifications and external appearances of the product without warning. •The color of the actual product will differ from the color in the catalog. •Prices published in this catalog do not include tax. •Please confirm the specifications of the product before placing an order.

SIBATA To place an order for this product contact



Main office 1-1-62, Nakane, Soka
Saitama, 340-0005 Japan
Overseas Sales Sales

TEL 81-48-933-1582 / FAX 81-48-933-1591

URL <http://www.sibata.co.jp/english/>