

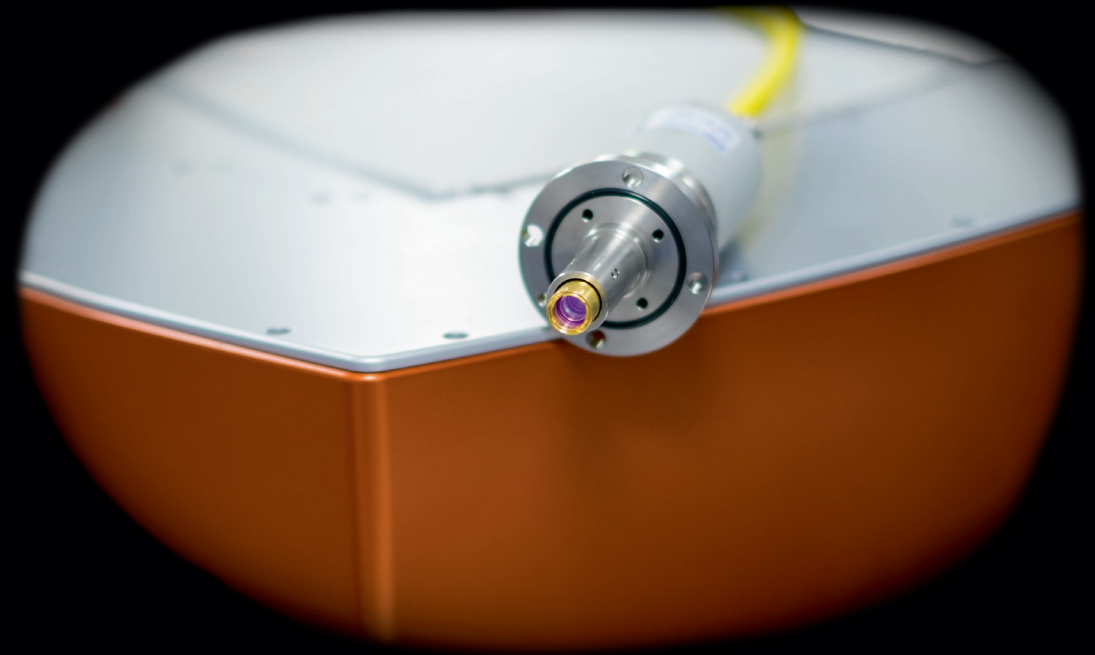
# Fiber

## Femtosecond fiber delivery module

Using hollow-core fiber technology, the FIBER module enables the delivery of ultrashort laser pulses without the negative effects of dispersion and non-linearity.

FIBER module integrates a complete beam launching system, a fiber, a collimation module, and an adapted flange to connect your fiber directly to your scanning system.

FIBER module is fully integrated within the laser design and does not require any alignment. Ultrafast laser integration in your micromachining station is as simple as connecting a fiber.

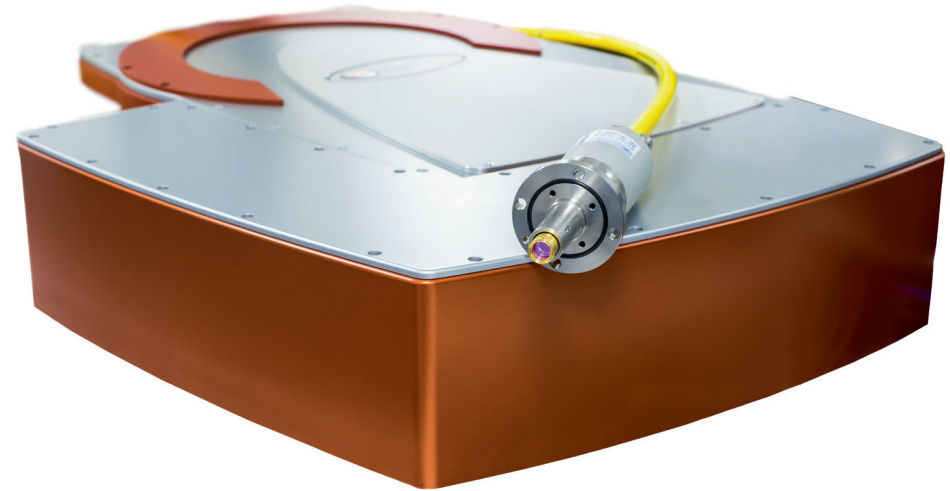


- # 1 Ease of integration
- # 2 High mechanical stability
- # 3 Optional collimation output

# Specifications



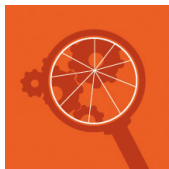
FIBER	
Fiber length	1, 2, 5 m (other length upon request)
Wavelength	1030 nm
Transmission	> 85 %
Collimation	Upon request



Specifications are subject to change without notice.

MODULES | EXTENSIONS

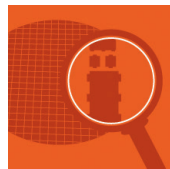
## Applications



MicroMachining



Medical Device  
Manufacturing



Microelectronics

