

IR CAMERA 640 x 512

GigE Vision 2.0 PoE Ethernet Power



Industrial, Commercial, Medical*, Research and Military Applications

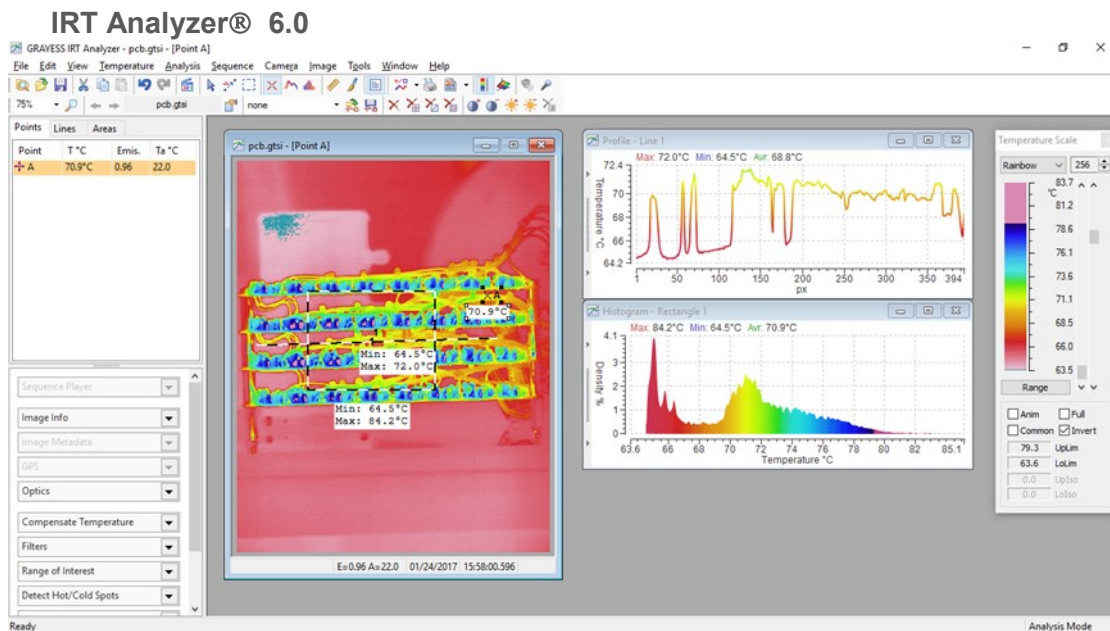
Professional Thermographic Analysis and Reporting Tool for Researchers

- Φ 640 x 512 VOx Thermal Array
- Φ Internal Ambient Shutter
- Φ 50mm Hi Res Janos Lens
- Φ EMI Environment Design
- Φ GRAYESS IRT Analyzer Software Suite
- Φ GigE PoE Single Cable Interface
- Φ Low Cost – High Performance
- Φ 3T MRI Tested for MRI Room Use
- Φ 7.5 to 13.5 um Wavelength Range
- Φ < 50 mK Sensitivity
- Φ -25 C to + 135C and -40 C to + 550C Ranges
- Φ Image Optimization
- Φ FLIR TAU2 640 Core
- Φ 17 um Pixel Pitch
- Φ High Speed GgE PoE Interface
- Φ User Calibrations
- Φ Digital Enhancement
- Φ 50 HZ Frame Rate
- Φ Includes Camera, 50 mm Lens, GigE PoE interface and Grayess IRT Analyzer Software

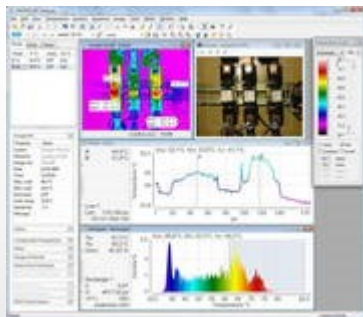
The New MR-9000 IR Camera System is a fully integrated Infrared Camera suitable for a variety of applications. The EMI design allows use in harsh magnetic or noisy environments without interference from or to the Camera. The GigE PoE interface provides a single RJ45 Cat 5-6 cable interface for power and full control. The IRT Analyzer Software Suite allows full research grade functions and control of the camera.

A Compact camera system with rugged design and full features can be connected to a Laptop, Desktop, or Network allowing remote use and multiple deployment.

*FDA Medical device approval pending.



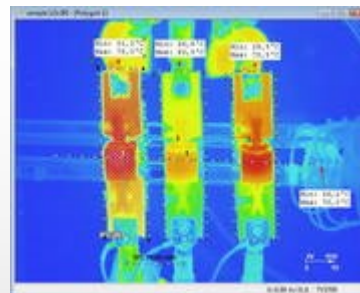
Easy to use integrated workspace



IRT Analyzer incorporates all the instruments you need when working with infrared images in one convenient workspace.

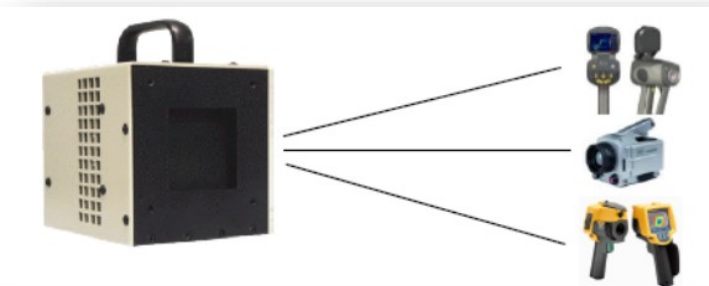
- All tools are accessible from the main menu and toolbar.
- By combining different tools you can make more sophisticated analysis.
- Navigation panel keeps the most often used functions right at your hand.
- All the features are accessible at any time... Even at real-time

Full range of analysis tools



IRT Analyzer has a complete range of analysis objects; every object is as flexible as possible.

- Spot measures (up to 286).
- Lines/profiles (unlimited number).
- Areas/histograms (unlimited number).
- Hot/cold spot detection.
- Rulers, distance/angle measures.
- Annotation tools.
- Emissivity/ambient temperature can be applied to every object individually.



IR-2100 Series Calibration Sources provide a simple certified calibration of Thermal Cameras