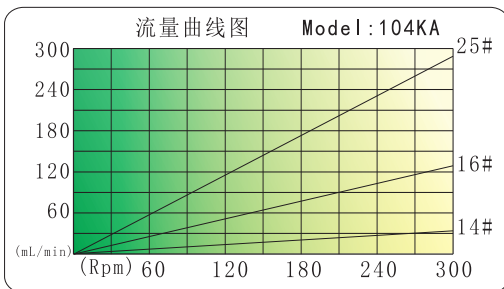
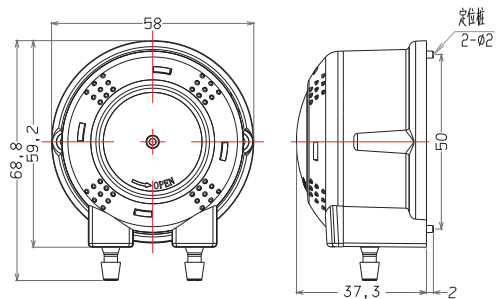
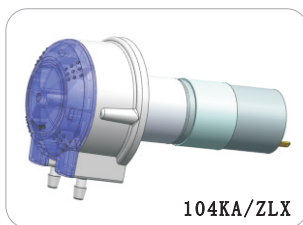
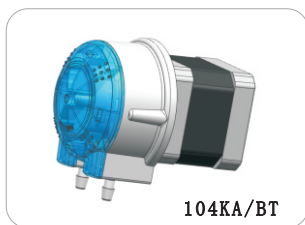
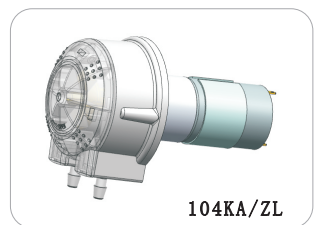


一、泵头外形及安装尺寸

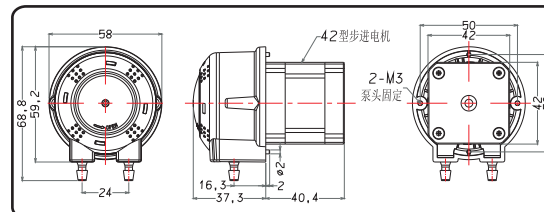
二、流量曲线图



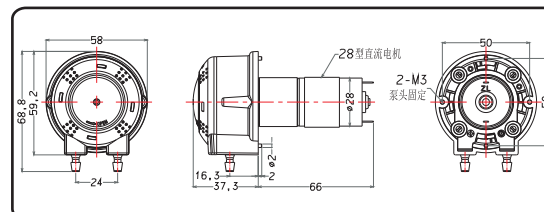
型号	适配软管	卡管方式	泵体材质	滚轮材质	极限流量	功率	重量
104KA/ZL	14#	固定	PA66+20GF	POM	234	24W	170g
104KA/ZLX	16#				234		230g
104KA/BT	25#				279		36W



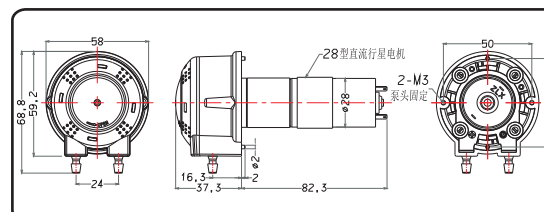
三、安装及使用(可装配三款电机)



104KA/BT:用步进电机驱动,配置驱动器,可精确调节流量.

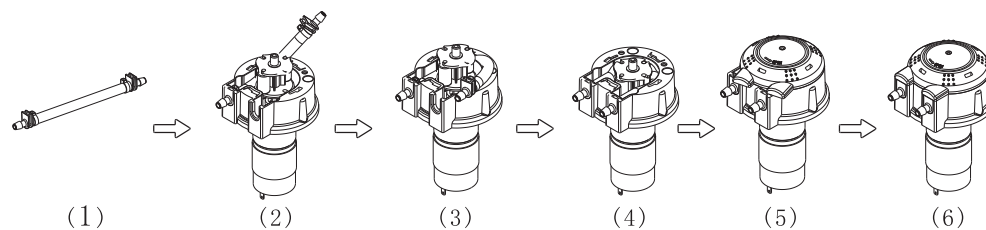


104KA/ZL:用有刷直流减速电机驱动,12V或24V直流供电,改变正负极可变向,亦可外接调速板对泵进行转速调节.



104KA/ZLX:用有刷直流行星减速电机驱动,12V或24V直流供电,改变正负极可变向,亦可外接调速板对泵进行转速调节.

四、软管装配



- 准备好标准长度软管
- 将接头一端卡入底座
- 软管围绕并未完全到位的轮组
- 软管居中滚轮中间位置,无扭曲
- 对准上盖和底座的安装卡位
- 顺时针旋转上盖装好泵头

注:如果发现软管破裂请及时清理泵头内部;定期涂抹润滑脂可延长软管和泵头使用寿命.

