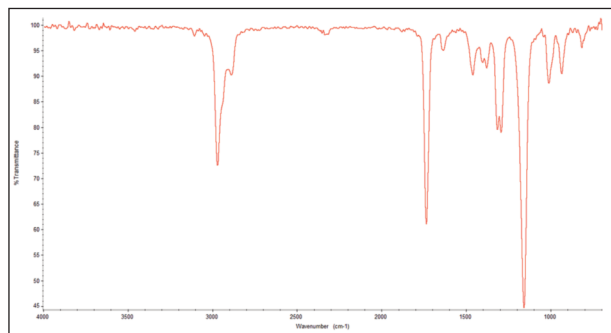


GC-FTIR Accessory – Combining GC Separation with Identification Power of FTIR

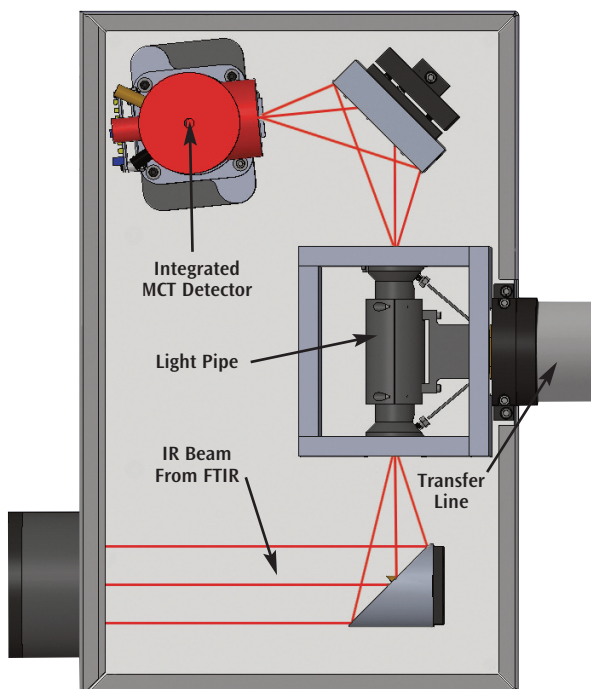


GC-FTIR data for IBMA

FEATURES OF THE GC-FTIR ACCESSORY

- Isomer identification
- Secondary confirmation of GC/MS results
- 120 mm IR beam pathlength for maximized FTIR sensitivity
- Temperature control settable up to 300 °C for flow cell and transfer line
- Purgeable module

Coupling gas chromatography with infrared spectroscopy provides an effective method of separating compounds as the sample moves through the GC column and identifying these compounds by spectroscopy. GC-FTIR is a preferred method for identifying isomers, which may be incorrectly identified using GC/MS. In addition, GC-FTIR may be used as a complementary analytical technique to confirm GC/MS results. Typical applications of GC-FTIR include the analysis of drugs, fragrances, and other organic compounds found in mixtures.



Optical geometry of the GC-FTIR Accessory

The PIKE Technologies GC-FTIR Accessory is an interface between the GC and the FTIR instruments. When fully installed, the sample pathway from the end of the GC column is diverted to a heated gas cell and back to the GC detector through the use of temperature controlled transfer lines. To maximize sensitivity, the light pipe is gold-coated and the accessory includes an on-board MCT detector.

GC-FTIR ACCESSORY SPECIFICATIONS

Dimensions (W x D x H)	51 x 45 x 27 cm
Weight	16 kg
FTIR Placement	Right or Left Side
Beam Height	Specific for FTIR
Detector Options	Yes
Purge	Purgeable
Light Pipe Pathlength	120 mm
Maximum Temperature	300 °C

ORDERING INFORMATION

GC-FTIR Base Accessory (must select, insert spectrometer model for XX)

PART NUMBER	DESCRIPTION
140-10XXR	GC-FTIR Accessory, Right Side
140-10XXL	GC-FTIR Accessory, Left Side

Notes: GC-FTIR Accessory includes optics, mounting hardware, narrow-band MCT detector and detector electronics, heated gas cell and temperature controller. The GC-FTIR accessory requires installation by a trained service representative; please consult with your FTIR and GC manufacturer. Please see the FTIR instrument code sheet for XX.

GC-FTIR Transfer Line (must select transfer line)

PART NUMBER	DESCRIPTION
115-0050	GC-FTIR Accessory Transfer Line

GC-FTIR Accessory Replacement Parts

PART NUMBER	DESCRIPTION
160-1135	KBr Window, 13 mm x 2 mm (single)
160-1008	KBr Window, 13 mm x 2 mm (Pack of 6)
140-2001	GC Graphite Window Gasket
140-2010	Ferrule for 0.25 mm coupling (Pack of 5)
140-2015	Ferrule for 0.32 mm coupling (Pack of 5)
140-2020	Ferrule for 0.53 mm coupling (Pack of 5)