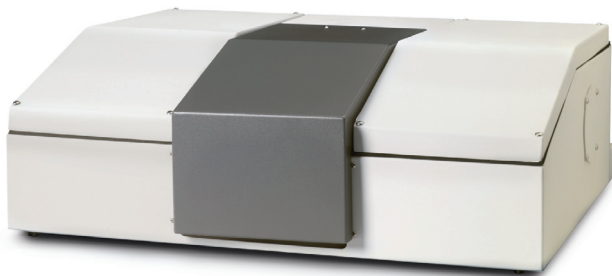
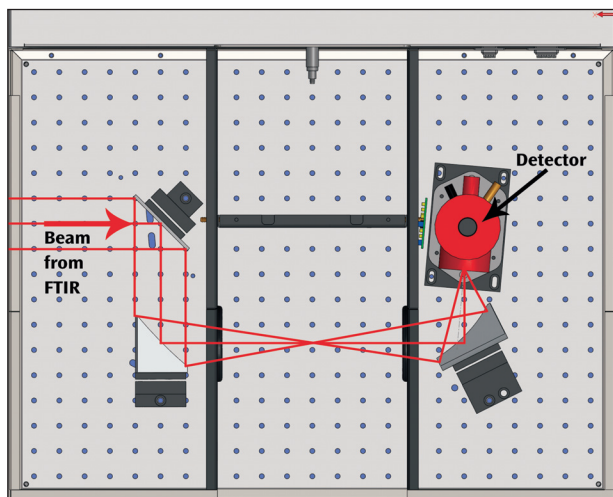


External Sample Module – Extending Sampling Efficiency



FEATURES OF THE EXTERNAL SAMPLE MODULE (ESM)

- Utilizes external beam of FTIR – keeps main sample compartment free for general sampling
- Right and left side external beam versions
- Full sized dimensions – for all sample compartment accessories
- Choice of integrated detector
- Ideal accessory for heated applications or a difficult experimental setup – saving time and improving reproducibility
- Customizable configuration – removable sample compartment walls for specific optical layouts
- Vibration isolated design – providing highest spectral quality
- Compatible with most FTIR spectrometers
- Requires installation by your FTIR spectrometer provider



Optical geometry for right side ESM

The External Sample Module (ESM) from PIKE Technologies is a versatile sampling station for FTIR spectrometers. It provides an additional sample compartment to keep the main sample compartment of the FTIR free for routine sampling and also provides a location for a more complex sampling setup. Examples of experiments ideally suited to using the External Sample Module include a long-path gas cell, PIKE TGA/FTIR accessory, MappIR™ and the AutoDiff™ (PIKE's automated diffuse reflectance accessory). The sample compartment of the ESM is full sized, and compatible with all PIKE Technologies accessories.

In addition to being a traditional sample compartment, the ESM has a screw-hole grid for customized optical layouts with removable inner and outer walls.

The External Sample Module is compatible with either sealed and desiccated or purged FTIR spectrometers. The PIKE ESM may be paired with most FTIR spectrometers with an external beam.

EXTERNAL SAMPLE MODULE SPECIFICATIONS

Dimensions (W x D x H)	615 mm x 490 mm x 205 mm
Weight	19 kg
FTIR Placement	Right or Left Side
Beam Height	Specific for FTIR
Sample Compartment Size (W x D x H)	190 mm x 265 mm x 155 mm
Detector Options	DTGS, MCT, others inquire
Screw Hole Grid	1" OC, 1/4-20, sealed
Sample Compartment EFL	6"
Purge	Purgeable
Inner, Outer Walls	Removable
FTIR Compatibility	Most

ORDERING INFORMATION

External Sample Module (must select, insert spectrometer model for XX)

PART NUMBER	DESCRIPTION
155-10XXR	External Sample Module, Right Side
155-10XXL	External Sample Module, Left Side

Notes: External Sample Module includes optics, mounting hardware, electrical cabling for FTIR and purge tubing and fittings to connect to purge air supply. Please see the FTIR instrument code sheet for XX.

Detector for External Sample Module (must select one or more)

PART NUMBER	DESCRIPTION
155-2010	DLaTGS Detector for External Sample Module
155-2020	MCT Detector (mid band) for External Sample Module

Notes: Detectors for the External Sample Module may be exchanged by the customer and are pin-mounted for easy exchange without alignment. Please ask us about other detector options.