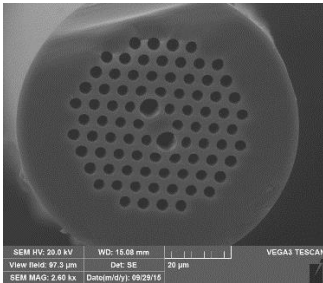
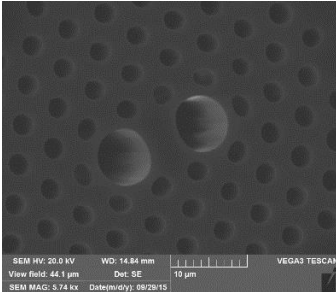


## Polarization Maintaining PCF Fiber



Product reference	P-PMCF-6-80
Cladding diameter (µm)	80 (+/- 0.5 µm)*
Core diameter (µm)	7.5 (+/- 0.3 µm)*
Mode Field Diameter @ 1550 nm	5 & 8 +/- 0.5 µm (Slow & fast axis)
Core material	F300 silica
Coating diameter (µm)	170 (+/- 5 µm)
Coating material (µm)	Dual coat acrylate
Background losses (dB/km) @1310 nm	< 5
Background losses (dB/km) @1550 nm	< 2.5
Group Birefringence @ 1550 nm	> 3.0x10 <sup>-4</sup>
<b>Key features</b>	
Low losses, radiation hard pure silica core	
<b>Applications</b>	
Fiber gyroscope, PM pigtailling	

\*Other dimension available on request

### Typical Loss Spectrum

