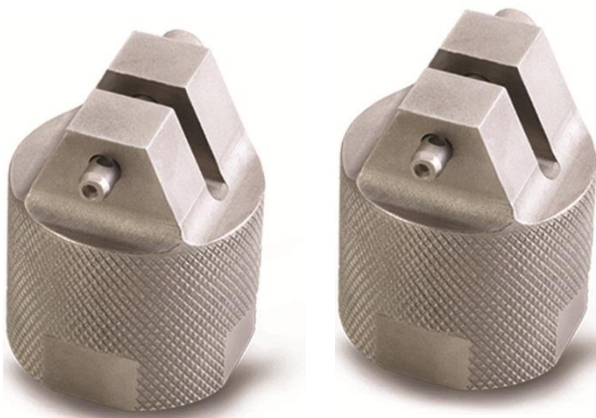


BiSS AC-05-XXFX Series Fracture mechanics clevis grips are designed for static and dynamic testing of compact tension, C(T), specimen in accordance with standard practice. These practices cover K_{Ic} , J_{Ic} and CTOD tests according to ASTM E399, E1820 and E647. To meet the test requirements for specimens of varying width and thickness, a series of clevis grips with varying sizes are available. Standard grips are rated over $-70\text{ }^{\circ}\text{C}$ to $+1000\text{ }^{\circ}\text{C}$ for low temperature and elevated temperature applications.

Standard features

- Compliant with ASTM E1820 and E647
- Static & Dynamic Rating
- Wide range of specimen thickness



Specifications

Model No.	Specimen width, mm	Pin diameter, mm	Specimen thickness, mm
AC-05-0XF1	25.4	6.3	6.35
AC-05-0XF2	25.4	6.3	12.5
AC-05-0XF3	50.8	12.7	12.5
AC-05-0XF4	50.8	12.7	25.4

Dimensions

Model No.	A, mm	C, mm	Stud size, D
Application for Room temperature to 100 °C			
AC-05-01F1	100	6.6	M27X2
AC-05-01F2	100	13.2	
AC-05-01F3	100	13.2	
AC-05-01F4	100	26	
Application temperature range up to 1000 °C			
AC-05-02F1	100	6.6	M27X2
AC-05-02F2	62.5	13.2	
AC-05-02F3	62.5	13.2	
AC-05-02F4	82	26	

