

Quadra™ 5

X-ray Inspection System

The Flexible X-ray Inspection Solution

The Quadra™ 5 with industry leading core technology offers high performance and ease of use for 2D and 3D X-ray applications. 0.35 μm feature recognition up to 10 W of power (optional 20 W) makes the Quadra 5 the leading choice for printed circuit board and semiconductor package inspection.

Designed specifically for the electronics market

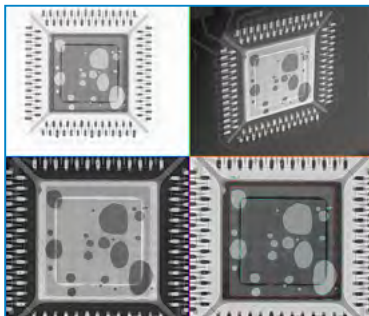


Benefits:

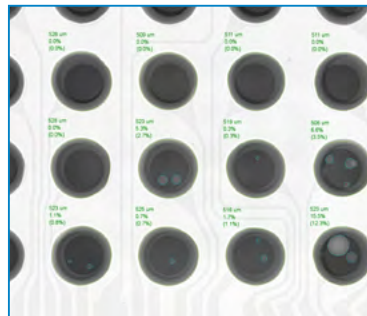
- Sub-micron resolution, reliability and performance helping users produce premium high quality products
- Greater throughput with continuous service without regular filament changes; from the inventors of the sealed-transmissive X-ray tube
- A wide choice of options to help tailor the system to specific application requirements

Features:

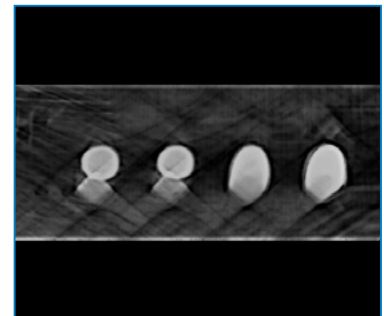
- Highest feature recognition at full power
- AXis – Active X-ray Image Stabilisation
- Automatic inspection routines as standard
 - QFN, BGA, Pad, Wire sweep
- Optional extras such as μCT and X-Plane® for virtual slicing without the need to cut the board



4-way split screen view with filters and void calculations for easier identification

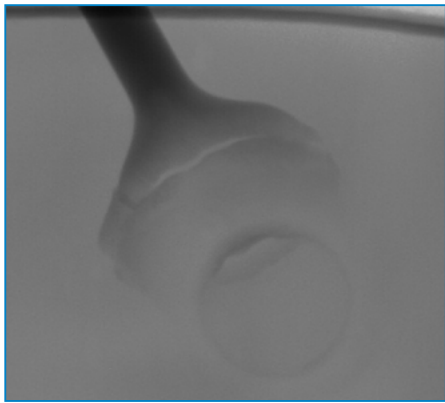


Automatic BGA void calculations with exportable reports



Head-in-Pillow effortlessly identified using X-Plane®

Options	
High Power Upgrade	10W to 20W
X-Plane®	
3D Visualization for X-Plane	
µCT (3D Inspection*)	
Single or Twin Joy Sticks	
Filtering Tray	
Heated Stage	
CAD Import	
Carbon Fibre Sample Tray	
Second Monitor	



20µm crack in bond wire

QuadraNT™ Tube	
Type	Sealed-Transmissive
Feature Recognition	0.35 µm up to 10W 0.95 µm up to 20W
Max. Power	10W (optional 20W)
Voltage	30-160kV

Aspire FP™ Detector	
Resolution	3 MP
Frame Rate	25 fps
Pixel Pitch	50 µm
Digital Imaging Processing	16-bit

Inspection	
Oblique Angle View	70°
Active Anti-Vibration	AXiS - Active X-ray Image Stabilization
Display Resolution (pixel per inch)	94 PPI
Max. Inspection Area	20" x 17.5"
Max. Sample Size	29" x 22.8"
Max. Geometric Magnification	2,500X
Max. Total Magnification	45,000X
Max. Sample Weight Standard Tray	5kg (11lbs)
Monitor	Single 24" WUXGA 1920 x 1200 on Fully Flexible Arm Mount

System	
Footprint	1570 W x 1500 D x 1900 H mm
System Weight	1950 kg (4300 lbs)
Power Supply	Single phase 200-230 VAC, 16A
Typical Power Consumption	1KW
Air Supply	4-6 bar clean, dry for anti-vibration
Operation Temperature	10-30°C
Humidity	<85% (non-condensing)
Operation	Mouse
OS	Windows 10 64-bit

* Various Software Options

For more information,
please contact your
Nordson DAGE regional office
or speak with your
Nordson DAGE representative,
all of which are listed on
www.nordsondage.com.

Americas

+1 760 930 3307 **Phone**
sales@nordsondage.com **Email**

Germany

+49 89 2000 338 200 **Phone**
sales.de@nordsondage.com **Email**

Japan

+81 3 3599 5920 **Phone**
sales.jp@nordsondage.com **Email**

South East Asia

+65 6796 9500 **Phone**
sales.sg@nordsondage.com **Email**

Taiwan

+886 2 2902 1860 **Phone**
globalsales@nordsondage.com **Email**

United Kingdom

+44 1296 317800 **Phone**
globalsales@nordsondage.com **Email**



LRQ 4009487 BS EN ISO 9001: 2008

Specifications subject to change without prior notice. E & O Copyright © Nordson DAGE 2016. Other products and company names mentioned are trademarks or trade names of their respective companies.

BF BE FIRST TECHNOLOGY CO., LTD.
锐峰先科技有限公司

Shanghai office: Room 1208, Jiaxing building, #877 Dongfang Road, Pudong, Shanghai City, China. (P.C. 200122)
上海地址: 上海市浦东新区东方路 877 号嘉兴大厦 1208 室(邮编: 200122)
Tel: 86-21-61005196 or 61005198 Fax: 86-21-61005197
Beijing office: Room 4015, Jiyou Building, #2 ChangXimen Road, Haidian District, Beijing, China. (P.C. 100097)
北京地址: 北京市海淀区厂西门路 2 号吉友大厦 4015 室(邮编: 100097)
Tel: 86-10-88447108 or 88440938 Fax: 86-10-88438081

Shenzhen: Room 1433, International Culture Building, No. 3039 Shennanzhong Road, Futian District, Shenzhen, China (P.C. 518033)
深圳地址: 深圳市福田区深南中路 3039 号国际文化大厦 1433 室(邮编: 518033)
Tel: 86-755-83640909 Fax: 86-755-83663361
西安地址: 西安市未央区徐家湾龙泉花园 2 号楼 10210 室(邮编 710021)
Tel: 86-29-86673078 Fax: 86-29-86673076
成都地址: 成都市金牛区蜀汉路 426 号上层建筑写字楼 B 座 1412 室(邮编: 610036)
Tel: 86-28-64916878 Fax: 86-28-87745268

