



The power of innovation. For better media preparation.
Media preparators "Systec MediaPrep".

Systec

the autoclave company

Prepare and sterilize microbiological media.
Fast, accurate and easy to handle.

Systec MediaPrep. For up to 30 litres.

Systec MediaPrep-10



Systec MediaPrep-20



Systec MediaPrep-30



Three models for 10 – 30 litres

	Systec MediaPrep-10	Systec MediaPrep-20	Systec MediaPrep-30
Dimensions (L x W x H) in mm	550 x 655 x 530	550 x 655 x 765	550 x 655 x 965
Chamber dimensions Ø x H in mm	296 x 250	296 x 450	296 x 650
Chamber volume in liters	17	31	41
inner vessel dimensions Ø x H in mm	266 x 222	266 x 422	266 x 622
inner vessel volume in liters	12	23	34
Wattage in kW	3.6	10.0	10.0

MediaPrep-10: voltage 220 – 240 V (single phase), 50/60 Hz, 16 A
 MediaPrep-20: voltage 380 – 400 V (3 phase + neutral), 50/60 Hz, 16 A
 MediaPrep-30: voltage 380 – 400 V (3 phase + neutral), 50/60 Hz, 16 A
 Modifications to other voltage as well as single or triple phase operation
 available on request.





Easy and safe to handle.

Locking of the door and loading hatch is dependent on temperature and pressure. Accidental opening is not possible!

The inner vessel holder is exchangeable and easy to remove and clean.

Every MediaPrep is so equipped and controlled that it can be used as a normal autoclave.



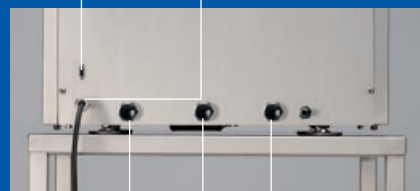
Heating and cooling systems are highly effective.

Powerfull heating elements enable particularly rapid heating to be carried out. Rapid cooling is by water circulation and support pressure directly at the external walls of the media vessel using sterilized demineralized water. The water is brought to cooling temperature using a plate heat exchanger with a water connection. The total process time including heating,

sterilizing and cooling to 50° C lasts from 60 – 120 minutes, depending on the size of the vessel, the quantity of media and the temperature of cooling water. The support pressure avoids an overboiling respectively foaming of the media. The air compressor is built-in.

Flexible power connection to socket

Interface RS 232



Collection outlet (drain)

Cooling water inlet

Inlet for demineralized water for steam generation

Prepare and sterilize microbiological media.
Fast, accurate and easy to handle.

Systec MediaPrep. For up to 120 litres.

Systec MediaPrep-45



Systec MediaPrep-65



Systec MediaPrep-90



Four models for 45 – 120 litres

	Systec MediaPrep-45	Systec MediaPrep-65	Systec MediaPrep-90	Systec MediaPrep-120
Dimensions				
(L x W x H) in mm	550 x 775 x 1000	550 x 775 x 1130	650 x 895 x 1030	650 x 895 x 1160
Chamber dimensions				
Ø x H in mm	400 x 488	400 x 693	500 x 615	500 x 795
Chamber volume				
in liters	62	88	123	158
inner vessel dimensions				
Ø x H in mm	366 x 452	366 x 657	467 x 572	467 x 752
inner vessel volume				
in liters	47	69	98	129
Wattage				
in kW	20	20	20	20

All types: voltage 380 – 400 V (3 phase + neutral), 50/60 Hz, 32 A
Modifications to other voltage as well as single or triple phase operation
available on request.



Systemec MediaPrep-120



Large vessels are just as easy to handle as compact ones.

Here also locking of the door and loading hatch is dependent on temperature and pressure. Accidental opening is not possible!

The inner vessel is just as convenient to exchange, to remove and to clean. These large vessels are also so equipped and controlled that they can be used as normal autoclaves.

Quickly heated, quickly cooled.

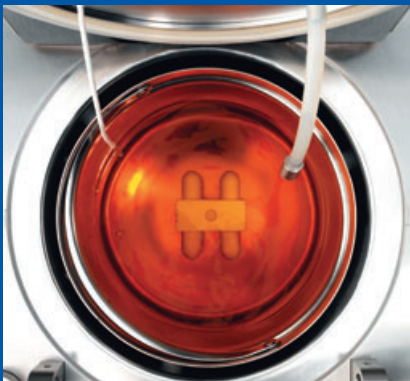
The powerful heating elements are adapted to the size of the vessel and hence facilitate rapid heating. Rapid cooling is the same as in the smaller vessels with water circulation and support pressure directly at the external walls by means of sterilized and demineralized water brought to cooling temperature using a plate heat exchanger with a water connection. The support pressure avoids an overboiling respectively foaming of the media. The air compressor is built-in.



Interface RS 232
Flexible power connection via CEE plug

Inlet for demineralized water for steam generation
Cooling water inlet
Collection outlet (drain)

Everything is
always under
control.



An automatic process guarantees uniform, high and reproducible quality of the prepared and sterilized media. The entire process – from initial heating to mixing and sterilization at a set temperature to cooling – is microprocessor-controlled. In addition, the temperature to be maintained after sterilization can be pre-selected.

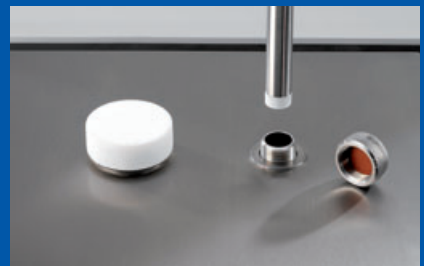


The filling port for additives subsequent to sterilization is generously dimensioned and has a safety lock. Sterile additives can be added via the open port with the help of a Bunsen burner or via a silicone septum using a syringe.

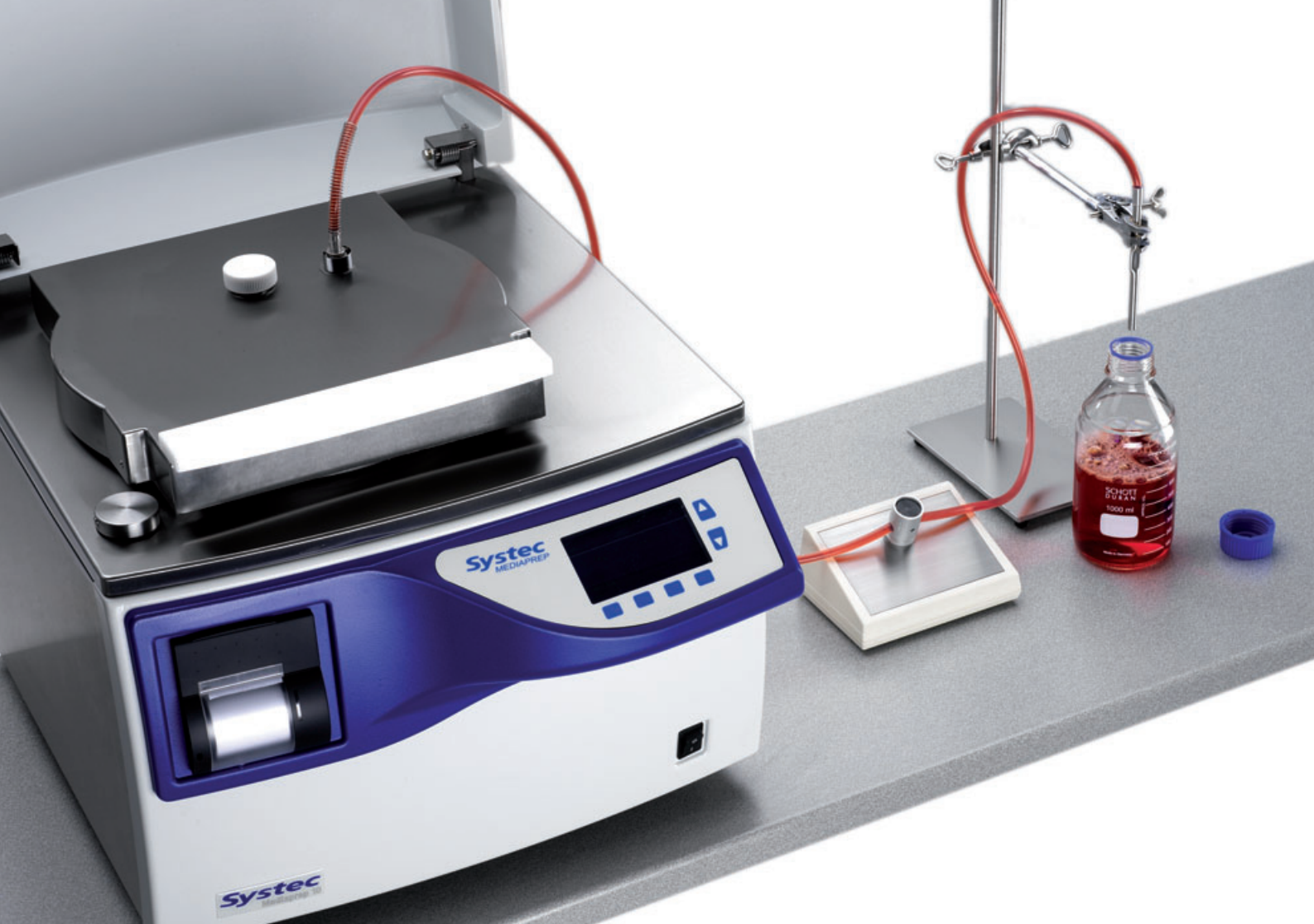


Easy to use

Operation is via a front panel with a large, easy-to-read display. Every Systec MediaPrep has an interface for a PC; special software enables comprehensive documentation to be prepared. MediaPrep can be optionally fitted with an integrated printer for recording process documentation or with a SD memory card.



A fixed screw connection guarantees safe and sterile dispensing of the media.



Safe media dispensing ...

The processed and sterile medium is dispensed via a flexible tube. The inner aspiration tube and dispensing port are also sterilized by steam during each sterilization process. The part of the tube outside of the instrument and the connected dispensing adapter must be separately sterilized using a suitable steam-sterilization procedure and connected to the dispensing port under sterile conditions.

... through optional systems:

Multi-function pump Dosierfix.

This system is characterized by a high degree of precision and high speed. The dosing volume can be selected from 0.1 up to 999 ml. The system operates accurately to $\pm 0.5\%$. Its automatic calibration function by means of a sample dosing guarantees reproducible results.

Automatic tube valve.

An economical method for dispensing. Whilst a pre-selectable constant slight excess pressure in the media vessel promotes flow, MediaPrep controls the opening and closing of the pinch valve. Once the desired volume has been entered, MediaPrep carries out a sample dosing operation and calibrates itself based on the viscosity of the media.

Other systems.

Standard, commercially-available peristaltic pumps, dilutors or filling systems for petri dishes can also be directly connected.



Performance and competence!

Performance based on experience!

We manufacture only laboratory autoclaves and media preparators.

But we do this with the greatest care and attention to detail!

Our goal is to continuously make work in the laboratory safer, easier, more exact and more economical. Based on our over 25 years of experience and permanent intensive cooperation with experts in practice, we know just how even the most extraordinary and complex cases of sterilization can be optimally solved.

We have the knowledge to guarantee better results!

With our special local partners our expertise and know-how is available to you on a worldwide basis.

Product performance:

- Development
- Design
- Manufacture in series
- Manufacture of special models
- Technical and application advice

Supplementary services:

- Installation and commissioning
- Special technical developments
- Tests and process development
- Individual service if required
- Contractual service
- Qualification and validation
- GMP-conform documentation

Rights reserved to change technical aspects as required.

Systemec

t h e a u t o c l a v e c o m p a n y

Systemec GmbH
Labor-Systemtechnik
Sandusweg 11
D-35435 Wettenberg
Tel. +49 (0) 641-98211-0
Fax +49 (0) 641-98211-21
E-Mail: info@systemec-lab.com
Internet: www.systemec-lab.com

Subsidiary Switzerland:
Systemec Schweiz GmbH
Bösch 23
CH-6331 Hünenberg
Tel. +41 (0) 41 781 52 80
Fax +41 (0) 41 781 52 79
E-Mail: info@systemec-lab.ch
Internet: www.systemec-lab.ch