

气袋自动进样器

Sample Bag Auto Sampler



仪器特点 Special Features

- 多位选择阀，可进行2位-50位气袋进样。
Multi-position valve, from 2 to 50 positions.
- 能够通过各品牌分析仪进行自动进样控制，提高分析效率。支持的品牌包括但不限于安捷伦、美国热电、PE、岛津等。
The auto sampler is compatible with multiple analyzer brands, including Agilent, Thermo, PE, Shimadzu and etc.
- 进样口为标准1/4"穿板卡套接头，更可根据用户需求定制自动吹扫系统。
Standard 1/4" bulkhead connections, can be customized according to user needs. Auto system purge function
- 使用真空隔膜泵进样，确保极佳的进样重复性。
Use diaphragm vacuum pump, ensure repeatability.
- 使用外径为1/16"的样品管路连接至分析仪的气体进样阀。
1/16" tubing for connection to gas sample valve.
- 实现进样全自动化，提高分析效率。
High automation, reduce manpower, improve efficiency, safety and etc
- 仪器系统状态清楚的显示。Instrument status clearly indicate at instrument panel and analyzer.

应用 Applications

- 气袋自动进样器用于将气态样品批量自动进样至气体分析仪。
Bag auto-sampler is used to inject the sample into gas analyzer automatically.
- 环境空气检测 Ambient air testing
- 冷却塔排放 Cooling tower emissions
- 烟草烟雾 Tobacco smoke
- 土壤水汽取样 Soil vapor sampling
- 石油化工气体分析 Petrochem gas analyzing

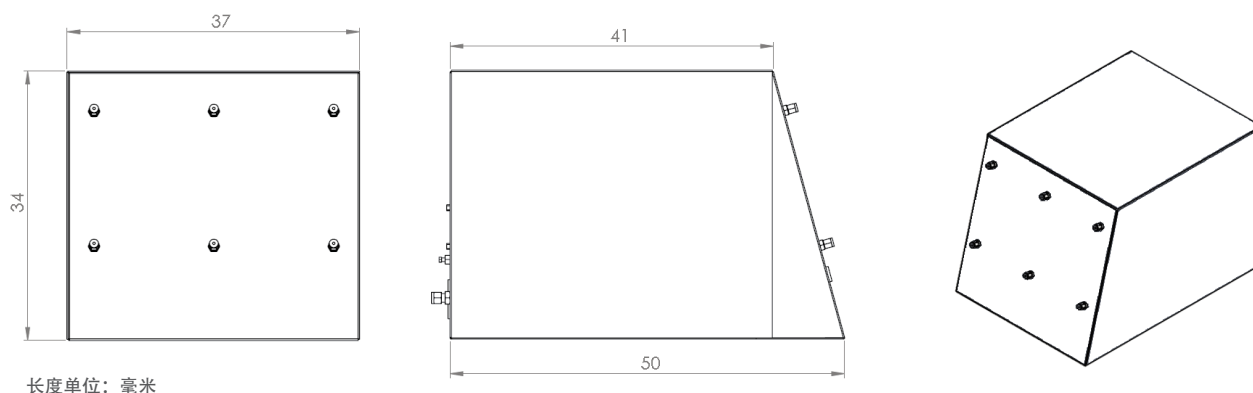
系统需求 System Requirement

- 气体分析仪应具备气体进样阀。
A gas sample valve on the analyzer interface.

描述 Description

- 气袋自动进样器用于将气态样品批量自动进样至气体分析仪。
进样点位数量高度定制化，可加挂最多50个采样气袋。样品气被一台真空泵由气袋输送至分析仪中的气体进样阀中。
Bag auto-sampler is used for the automated sampling of up to 50 sample bags. Sample is pulled from the bag by a diaphragm vacuum pump to a gas sample valve on the analyzer.

设备外观图 Dimensions

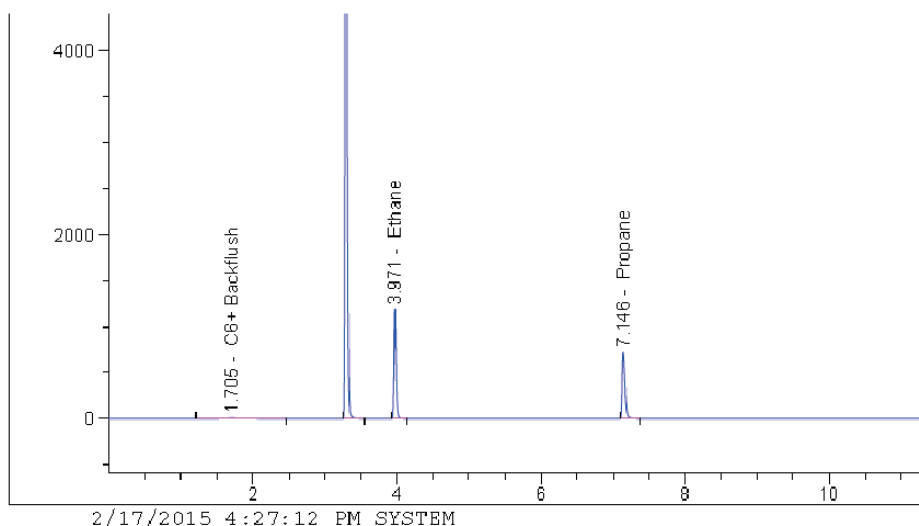


进样重复性数据 Repeatability

Ethane

Concentration (mol %): 5.10

Injection	Retention time (min)	Peak Height (pA)
1	3.971	1438.7
2	3.972	1440.7
3	3.971	1422.3
4	3.971	1449.4
5	3.972	1449.2
6	3.971	1430.7
RSD	0.001	10.6
RSD%	0.013	0.7



技术信息 Technical Data

进样口数量 Inlet	标准为6个，最大为50个
连接管路 Tubing	316SS OD1/16"
供电 Power supply	100-115/220-240VAC 50/60Hz- 5.9/2.3A
额定功率 Power consumption	100W
最大进样压力 Max. Operating pressure	2 barg.
允许样品温度 Sample temperature	+10 至 +40 ° C
环境温度 Ambient temperature	+10 至 +40 ° C
存储温度 Storage temperature	-15 至 +60 ° C
防护等级 Degree of protection	IP 20
外观尺寸 Dimensions	W24" X H32" X D12"