

工业型蠕动泵

G100-1J

参考流量范围(单通道)



- 铝制外壳,提高整机的防腐蚀性能
- 强大的电磁兼容性能,不会被电磁环境干扰,也不会干扰周围的其它电子设备
- 高防护等级,适用于潮湿多尘的环境
- 高质量的电子元器件,优化的软件设计和硬件设计,保证了长期可靠、稳定的运行
- 液晶显示屏,直观显示泵的设置参数和工作状态

适用泵头



YZ1515x
YZ2515x



YZII15
YZII25



DG-1



DG-2
DG-4



FG15-13
FG25-13



DMD15-13-B



BZ25
BZ15



DG15-24
DG15-28

转速范围	0rpm-100rpm, 正反转可逆
转速调节分辨率	0.1rpm
显示方式	液晶屏
控制方式	按键控制, 外部信号控制和通信控制
外控功能	启停控制/方向控制: 电平信号和触点信号可选 速度控制: 0-5V、0-10V、4-20mA、0-10kHz可选, 接口统一, 最大转速可设
通信功能	RS485通信接口, 支持兰格公司协议和Modbus协议, 可通过按键设置通信参数(波特率、校验位, 停止位)
参数记忆	运行参数和系统参数自动保存
上电运行状态	上电停止或恢复掉电前状态可设
全速功能	一键控制全速工作, 用于快速填充、排空等
电磁兼容性	满足并优于电磁兼容指令2014/30/EU的要求
键盘锁功能	键盘可锁定, 防止误操作, 锁定延迟时间可设
外形尺寸(长×宽×高)	235mm×142mm×152mm
适用电源	AC90V~260V/20W, 50~60Hz
工作环境温度	0℃~40℃
工作环境相对湿度	10%~90%
防护等级	IP65
重量	3.64kg



PERISTALTIC PUMP

驱动器型号	产品编号	适配泵头型号	适用软管规格	最大参考流量 (mL/min)	重量(kg)	
G100-1J	05.02.20A	YZ1515X, YZII15	13" 14" 19" 16" 25" 17" 18"	380	4.04	
		YZ2515X	15" 24"	270		
		YZII25	15" 24" 35" 36"	500		
		FG15-13	13" 14" 19" 16" 25" 17" 18"	430	3.92	
		FG25-13	15" 24"	320		
		DMD15-13-B	2×13" 2×14" 2×19" 2×16" 2×25"	375	4.07	
		BZ15-13-A	14"	22	3.95	
		BZ15-13-B	16"	80		
		BZ15-13-C	25"	150		
		BZ15-13-D	17"	270		
		BZ25-13-B	24"	250		
		DG15-24	16" 25" 17"	300(单通道)		4.46
		DG15-28	13" 14" 内径≤3.17mm 壁厚0.8-1mm	75(单通道)		4.31
		DG-(1,2,4)6滚轮	内径≤3.17mm 壁厚0.8-1mm	48(单通道)	3.84-3.91	
DG-(1,2,4)10滚轮	32(单通道)					

Industrial Peristaltic Pump

G100-1J

Flow Rates (Single Channel)



- With aluminium alloy housing, the pump has good corrosive resistance and could be used in corrosive environment.
- With the powerful electromagnetic compatibility, the pump will not behave unacceptably in the EMI environment and will not interfere with other electronic equipment.
- With high IP rating, the pump could be used in wet and dusty environment.
- Using high quality electronic components, optimizing software design and circuit design, the pump provides long-term reliable and stable operation.
- LCD displays parameters and running state, which provides enough information for correct operation.

Pump Head Option



YZ1515x, YZ2515x



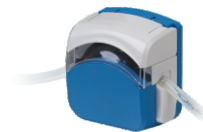
YZII15, YZII25



DG-1



DG-2, DG-4



FG15-13, FG25-13



DMD15-13-B



BZ25, BZ15



DG15-24, DG15-28

PERISTALTIC PUMP

Speed	0rpm-100rpm, CW/CCW
Speed resolution	0.1rpm
Display	LCD
Control mode	Keypad, external signal control and communication control are available
External control	Start/stop control, direction control: voltage level signal or switch signal are optional. Speed control: 0-5V, 0-10V, 4-20mA, 0-10kHz are optional with uniform interface, max speed can be changed within 100rpm
Communication control	RS485 interface, Longer protocol or Modbus protocol, the communication parameters (baud rate, parity, stop bit) can be set through keypad
Parameter memory	Running parameters and system parameters will be saved automatically
Running state when power on	The running state when power on can be set as stop or as previous state
Prime	Fast filling or emptying at full speed
EMC	Comply with EMC Directive 2014/30/EU
Keypad lock function	Keypad can be locked to prevent the misoperation. The locking delay time can be set
Dimension(L X W X H)	235mm × 142mm × 152mm
Power supply	AC90V-260V/20W, 50-60Hz
Operating temperature	0°C - 40°C
Relative humidity	10%-90%
IP rating	IP65
Weight	3.64kg



Model	Product Code	Pump Head	Tubing	Max. Flow Rate (mL/min)	Weight (kg)
G100-1J	05.02.20A	YZ1515X, YZII15	13" 14" 19" 16" 25" 17" 18"	380	4.04
		YZ2515X	15" 24"	270	
		YZII25	15" 24" 35" 36"	500	
		FG15-13	13" 14" 19" 16" 25" 17" 18"	430	3.92
		FG25-13	15" 24"	320	
		DMD15-13-B	2×13" 2×14" 2×19" 2×16" 2×25"	375	4.07
		BZ15-13-A	14"	22	3.95
		BZ15-13-B	16"	80	
		BZ15-13-C	25"	150	
		BZ15-13-D	17"	270	
		BZ25-13-B	24"	250	
		DG15-24	16" 25" 17"	300(Single Channel)	
		DG15-28	13" 14" ID ≤ 3.17mm Wall Thickness 0.8-1mm	75(Single Channel)	4.31
		DG-(1,2,4)6 Rollers	ID ≤ 3.17mm Wall Thickness 0.8-1mm	48(Single Channel)	3.84-3.91
DG-(1,2,4)10 Rollers	32(Single Channel)				