

Collect and record rainfall data ANYWHERE with the RainLogger™

The RainLogger™ and RainLogger SP™ provide an economical solution to the annual collection and recording of rainfall data even in remote areas.



The RainWise RainLogger & RainLogger-SP

The RainLogger is comprised of our tipping bucket rain gauge and the RainLog™ rain logger mounted and ready for installation in the ground. It will collect and record rainfall anywhere in the world for one year at a resolution of one minute. Both systems feature:

- One year capacity – both logger and battery supply
- One minute time/date stamp resolution
- EEPROM Non-volatile memory
- Powered by one CR2477N battery
- Windows®-compatible software

The RainLogger™ System features the RAINEW Tipping Bucket

The 8" diameter UV-inhibited polypropylene collector meets NWS specifications for statistical accuracy. Every time the bucket tips, a count is transmitted. Each tip of the bucket is equivalent to 1/100th of an inch of rainfall.

The RainLogger SP™ features the more rugged RGA Industrial

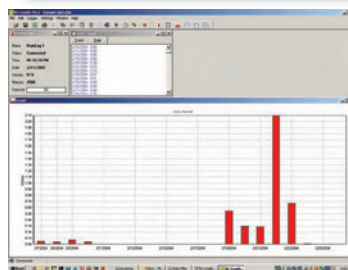
Tipping Bucket — for enhanced accuracy

Constructed from anodized aluminum and stainless steel, the RGA tipping bucket rain gauge provides years of precision recording of rainfall data. The tipping bucket sensor is mounted on stainless steel instrument bearings and housed in an anodized aluminum case. The unit has a built in bubble level to facilitate installation. An insect/debris screen is also provided.

Both Systems include:

RainLog Data Logger

The RainWise RainLog data logger provides an economical method of logging rainfall at a remote location where power is not available. This battery operated logger fits inside our rain gauge and will log total rainfall at a one minute resolution for up to one year. It can easily be unplugged and connected to the serial port of a computer. It comes complete with software and serial port connecting cable. Serial to USB converter available.



RL-Loader 2 Software

This free Windows based software package will run on Windows 98 or newer. RL-Loader is used to configure and download data from the RainLog. Data is displayed in both text and graphical formats. You can print graphs and reports directly. Previously saved data can be loaded to perform analysis and generate reports. The latest release can export data directly into Microsoft Excel. The device info window gives you vital information about the attached Rainlog, like its time/date and the amount of memory used. The text window displays daily totals or the list of rainfall events as they occurred. The graph window displays a bar chart of the daily rainfall totals. The graphing range is also configurable.

NEW RL-Loader Version 2.2 now supports Windows Vista and can import data files from RLMobile.

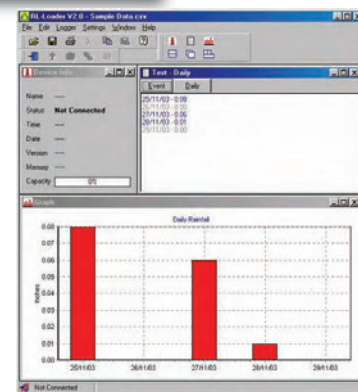
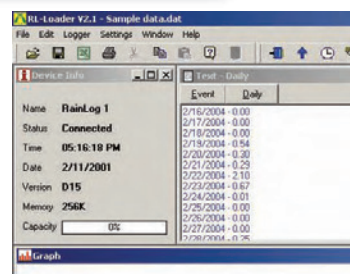
RLmobile Windows Mobile Software

Now you can use your PDA to download data in the field. Its quick and easy to install and use. This is optional software.

Also Available:

RainLog™ Data Logger

Sold separately to work with ours or other tipping bucket rain gauges



The RainWise® RainLog™

The RainWise rain logger provides an economical method of logging rainfall at a remote location where power is not available.

This logger fits inside any of our rain gauges and will log total rainfall at a one minute resolution anywhere in the world for one year. It can easily be unplugged and connected to the serial port of a computer. It comes complete with Windows® software and serial port connecting cable.

- Five year warranty.
- One year capacity – both logger and battery supply.
- One minute time/date stamp resolution.
- Will fit inside any RainWise gauge.
- Nonvolatile memory.
- Powered by two AAA alkaline batteries.
- May also be used as an event recorder.
- LED flashes when properly connected.
- Windows® software included.



The RainWise® RAINEW Wireless Rain Gauge

This gauge design eliminates the normal wire connection from the rain gauge to the indoor display. The battery operated transmitter operates up to 300 feet away. Just locate the gauge in an open area and read the rainfall amount on the indoor display. The 8" diameter collector meets NWS specifications for statistical accuracy. Every time the bucket tips, a count is transmitted to the indoor display and the gauge empties. You never have to empty the gauge. Each tip of the bucket shows one hundredth of an inch on the indoor display.

- New Design for 2007.
- 300 ft* Wireless Range.
- Battery Operated.
- Meets NWS specifications.
- Lifetime guarantee on the collector.

The RAINEW WIRELESS rain gauge requires two "AA" batteries for the Transmitter, 3 "AA" cells and a alkaline button battery (included) for the LCD receiver/display. The electronics and enclosure were redesigned and improved for Spring 2007. The RAINEW collector has a lifetime guarantee. The transmitter, receiver, counters and switches are guaranteed for a year. Both recorders have a keyhole slot in the back for wall mounting.

* Specified range based based on unobstructed line of sight. Typical range through one wall is usually 100' to 200'.



The RainWise® Wired Rain Gauges

RAINEW 111 Tipping Bucket Wired Rain Gauge

The 8" diameter collector meets NWS specifications for statistical accuracy. Every time the bucket tips, a count is transmitted to the indoor display and the gauge empties. You never have to empty the gauge. Each tip of the bucket shows one hundredth of an inch on the indoor LCD display. The display will indicate up to 9.99" of rain. A button on the counter lets you reset to zero after each rainfall. Installation to the plug-in counter is a cinch. The long-life alkaline counter battery is included. Mount this gauge out in your yard and record rainfall inside the house.

- Self emptying
- 60 feet of cable included
- Lifetime collector warranty



RAINEW 211 Tipping Bucket Dual Counter Wired Rain Gauge

The 8" diameter collector meets NWS specifications for statistical accuracy. Every time the bucket tips, a count is transmitted to the indoor display and the gauge empties. You never have to empty the gauge. Each tip of the bucket shows one hundredth of an inch on the indoor LCD display. Installation to the plug-in counter is a cinch. Mount this gauge out in your yard and record rainfall inside the house.

- Redesigned for Spring 2007
- Self emptying.
- Dual Displays.
- Lifetime collector warranty

The dual displays allow you to track both individual events and keep an annual running total. The dual counter requires 3 "AA" alkaline batteries and two button cell batteries. The button cell batteries are included and will last for several years.

