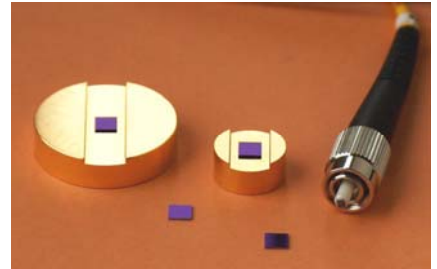


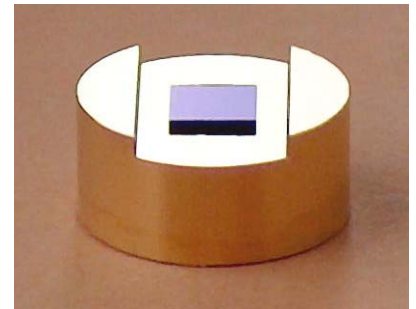
**Product list**

- for passive mode-locking of solid state, fiber or microchip lasers

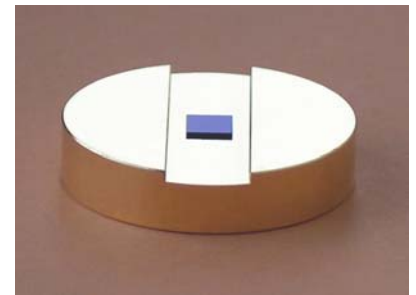
<b>SAM 940</b>	laser wavelength high reflection band (R>99%) absorption relaxation time	$\lambda = 940 \text{ nm}$ $\lambda = 910 - 990 \text{ nm}$ $A_0 = 2 - 30 \%$ $\tau \sim 1 \text{ ps}$
<b>SAM 980</b>	laser wavelength high reflection band (R>99%) absorption relaxation time	$\lambda = 980 \text{ nm}$ $\lambda = 940 - 1000 \text{ nm}$ $A_0 = 2 - 50 \%$ $\tau \sim 500 \text{ fs}$
<b>SAM 1040</b>	laser wavelength high reflection band (R>99%) absorption relaxation time	$\lambda = 1040 \text{ nm}$ $\lambda = 1000 .. 1080 \text{ nm}$ $A_0 = 0.7 - 65 \%$ $\tau \sim 500 \text{ fs} - 10 \text{ ps}$
<b>SAM 1064</b>	laser wavelength high reflection band (R>99%) absorption relaxation time	$\lambda = 1064 \text{ nm}$ $\lambda = 1020 .. 1110 \text{ nm}$ $A_0 = 0.5 - 70 \%$ $\tau \sim 500 \text{ fs} - 27 \text{ ps}$
<b>SAM 1150</b>	laser wavelength high reflection band (R>99%) absorption relaxation time	$\lambda = 1150 \text{ nm}$ $\lambda = 1110 .. 1200 \text{ nm}$ $A_0 = 3 - 6 \%$ $\tau \sim 500 \text{ fs}$
<b>SAM 1300</b>	laser wavelength high reflection band (R>99%) absorption relaxation time	$\lambda = 1300 \text{ nm}$ $\lambda = 1220 .. 1320 \text{ nm}$ $A_0 = 4 - 12 \%$ $\tau \sim 10 \text{ ps}$
<b>SAM 1340</b>	laser wavelength high reflection band (R>99%) absorption relaxation time	$\lambda = 1340 \text{ nm}$ $\lambda = 1310 .. 1370 \text{ nm}$ $A_0 = 1 - 15 \%$ $\tau \sim 1 \text{ ps}$
<b>SAM 1510</b>	laser wavelength high reflection band (R>99%) absorption relaxation time	$\lambda = 1510 \text{ nm}$ $\lambda = 1470 .. 1570 \text{ nm}$ $A_0 = 6 - 11 \%$ $\tau \sim 10 \text{ ps}$
<b>SAM 1550</b>	laser wavelength high reflection band (R>99%) absorption relaxation time	$\lambda = 1550 \text{ nm}$ $\lambda = 1500 .. 1600 \text{ nm}$ $A_0 = 1 - 50 \%$ $\tau = 2 - 12 \text{ ps}$



mounting types



12.7 mm Ø - (1/2" Ø) - Cu-Mount

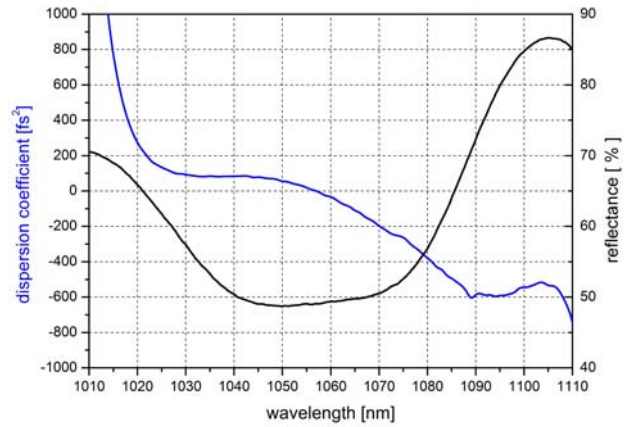
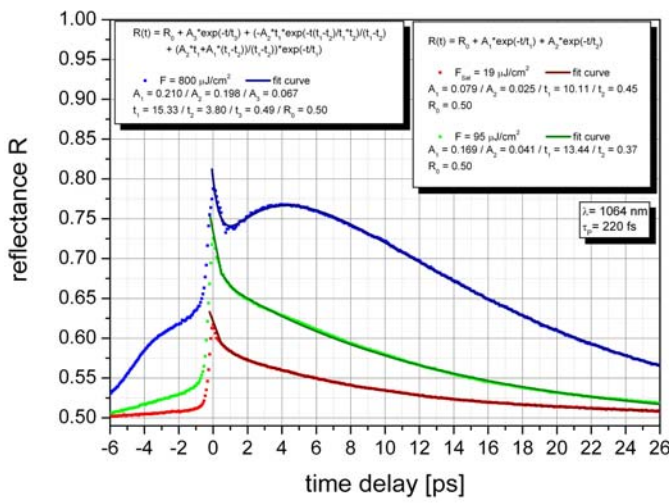
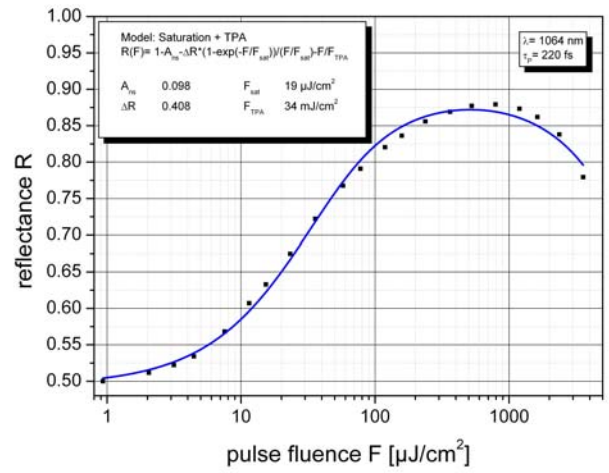
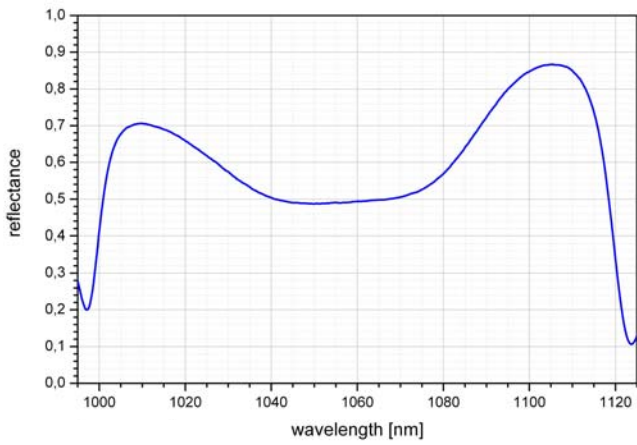


25.4 mm Ø - (1" Ø) - Cu-Mount



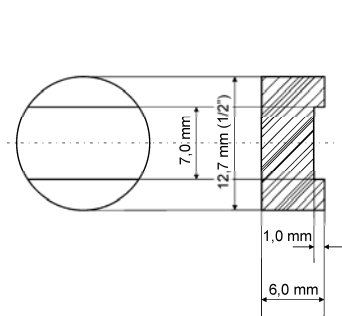
fiber coupled SAM

# SAM-1064-50-X-12ps



- Chip area: 1 mm x 1 mm, 1.3 mm x 1.3 mm or 4 mm x 4 mm (other on request)
- Chip thickness: 400  $\mu\text{m}$  (other on request)
- Mount:
- unmounted
  - 12.7 mm  $\varnothing$  (1/2"  $\varnothing$ )
  - 25.0 mm  $\varnothing$
  - 25.4 mm  $\varnothing$  (1"  $\varnothing$ )
  - fiber coupled (SMF, PM)

Cu-Mount  $\varnothing$  12.7 mm:



Cu-Mount  $\varnothing$  25.4 mm:

